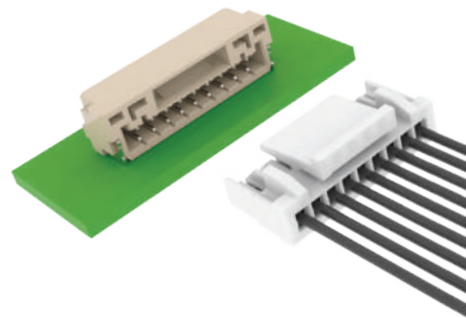
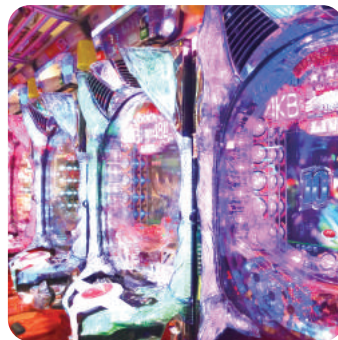


基板  
対電線  
接続用圧着  
コネクタ

Wire  
to  
Board  
Connectors  
Crimp Type



# Greenconn▶

Product selection guide  
2024



[www.greenconn.com](http://www.greenconn.com)

1.25 / 2.00mm ピッチ対応

1.25 / 2.00mm Pitch Solutions

# 基板対電線接続用圧着 コネクタ

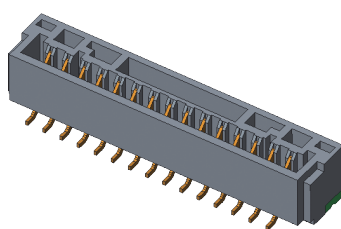
# Wire to Board Connectors

1.25 mm

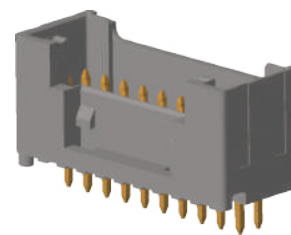
2.00 mm

▼ 基板側コネクタ  
/ Board Side Connector

トッパ型 / Top insert

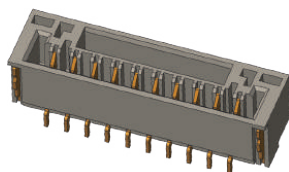


GPDC101 Series

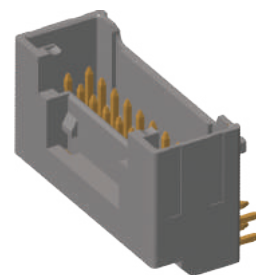


GWFA214 Series

サイド型 / Side insert

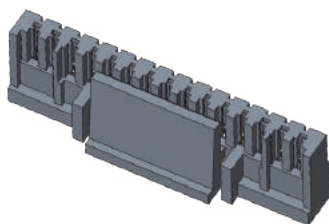


GPDD101 Series

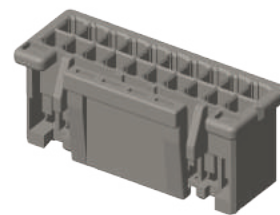


GWFB215 Series

▼ハウジング  
/ Housing

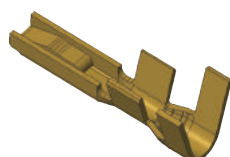


GHD361 Series

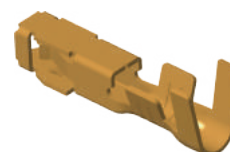


GWF192 Series

▼コンタクト  
/ Contact



GRD601 Series



GRF159 Series

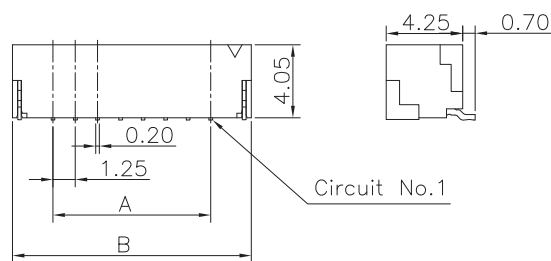
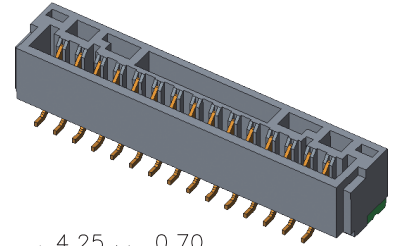
# 1.25 mm

## 基板側コネクタ / Board Side Connector

トップ型 / Top insert

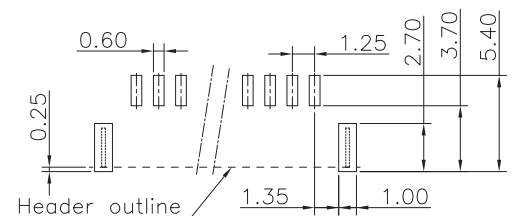
圧着タイプCrimp/実装SMT

### GPDC101 Series



No. of circuits	Dimensions (mm)	
	A	B
2	1.25	5.75
3	2.50	7.00
4	3.75	8.25
5	5.00	9.50
6	6.25	10.75
7	7.50	12.00
8	8.75	13.25
9	10.00	14.50
10	11.25	15.75
11	12.50	17.00
12	13.75	18.25
13	15.00	19.50
14	16.25	20.75
15	17.50	22.00

Recommended P.C.Board Layout  
(Tolerance: ±0.05)



### Specifications 一般仕様

定格電流	Current Rating: 1.0A AC/DC (AWG#26)
定格電圧	Volatage Rating: 50V AC/DC
使用温度範囲	Temp. Range: -25°C~+85°C
接触抵抗	Contact Resistance:
初期	Initial: Max. 30mΩ
環境試験後	After: 50mΩ
絶縁抵抗	Insulation Resistance: Min. 100MΩ
耐電圧	Withstanding Voltage: 500 VAC/分
適用電線	Applicable wire: AWG#30~#26 O.D. 0.76mm~1.0mm

### Materials 材質

樹脂材: 耐高温ナイロン (象牙白)  
端子材: リン青銅/銅下地付 リフロースズメッキ

Housing: PA9T UL94V-0 Natural  
Terminal: Phosphor Bronze  
Plating with Copper-undercoated Reflow Sn

### Ordering Informatuon

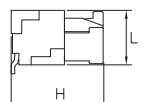
GPDC101 - XX XX A 001 J X A X

XX	Color U=natural(ivory)
XX	Standard Packing F=Reel+CAP H=Reel+Acetate tap
A	Standard Plating 29=Ni 50~100u" Tin120~200u"
001	No. of Pins per Row 2~15
J	
X	
A	
X	

### Mating with

嵌合相手型番と寸法

サイド型基板コネクタ Side entry type Header	ハウジング Housing	H (mm)	L (mm)
GPDC101-XXXXA001JUAX	GHD361-XXAAJ-N	7.3	4.25

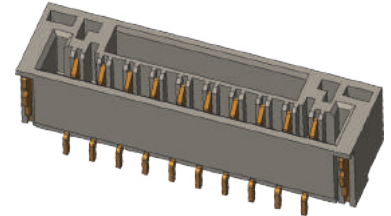


# 1.25 mm

## 基板側コネクタ / Board Side Connector

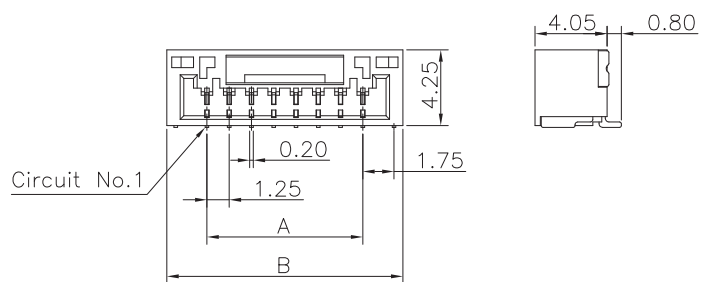
サイド型 / Side insert

GPDD101 Series



### Specifications 一般仕様

定格電流	Current Rating: 1.0A AC/DC (AWG#26)
定格電圧	Volatage Rating: 50V AC/DC
使用温度範囲	Temp. Range: -25°C~+85°C
接触抵抗	Contact Resistance:
初期	Initial: Max. 30mΩ
環境試験後	After: 50mΩ
絶縁抵抗	Insulation Resistance: Min. 100MΩ
耐電圧	Withstanding Voltage: 500 VAC/分
適用電線	Applicable wire: AWG#30~#26 O.D. 0.76mm~1.0mm



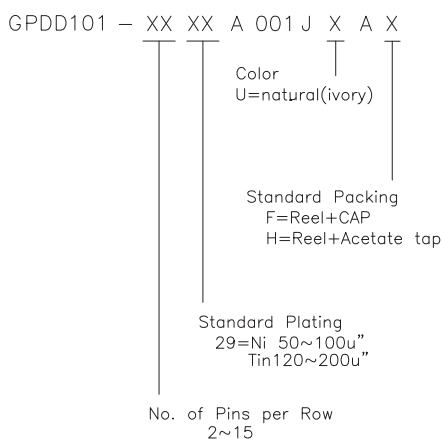
No. of circuits	Dimensions (mm)	
	A	B
2	1.25	5.75
3	2.50	7.00
4	3.75	8.25
5	5.00	9.50
6	6.25	10.75
7	7.50	12.00
8	8.75	13.25
9	10.00	14.50
10	11.25	15.75
11	12.50	17.00
12	13.75	18.25
13	15.00	19.50
14	16.25	20.75
15	17.50	22.00

### Materials 材質

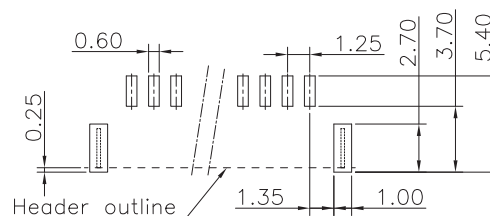
樹脂材: 耐高温ナイロン (象牙白)  
端子材: リン青銅/銅下地付 リフロースズメッキ

Housing: PA9T UL94V-0 Natural  
Terminal: Phosphor Bronze  
Plating with Copper-undercoated Reflow Sn

### Ordering Informatuon



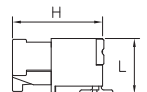
Recommended P.C.Board Layout  
(Tolerance:±0.05)



### Mating with

嵌合相手型番と寸法

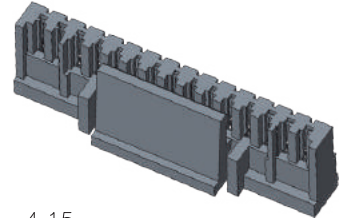
サイド型基板コネクタ Side entry type Header	ハウジング Housing	H (mm)	L (mm)
GPDD101-XXXXA001JUAX	GHD361-XXAAJ-N	7.15	4.35



# 1.25 mm

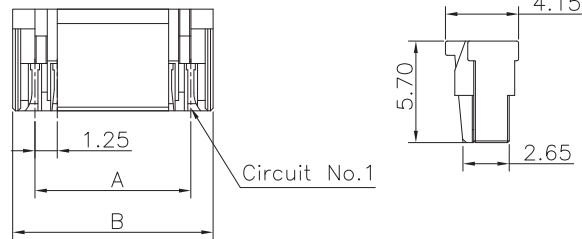
## ハウジング / Housing

### GHD361 Series



#### Specifications 一般仕様

定格電流	Current Rating: 1.0A AC/DC (AWG#26)
定格電圧	Volatage Rating: 50V AC/DC
使用温度範囲	Temp. Range: -25°C~+85°C
接触抵抗	Contact Resistance:
初期	Initial: Max. 30mΩ
環境試験後	After: 50mΩ
絶縁抵抗	Insulation Resistance: Min. 100MΩ
耐電圧	Withstanding Voltage: 500 VAC/分
適用電線	Applicable wire: AWG#30~#26 O.D. 0.76mm~1.0mm



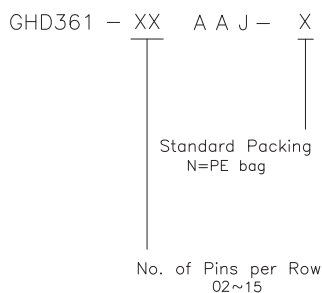
No. of circuits	Dimensions (mm)	
	A	B
2	1.25	3.75
3	2.50	5.00
4	3.75	6.25
5	5.00	7.50
6	6.25	8.75
7	7.50	10.00
8	8.75	11.25
9	10.00	12.50
10	11.25	13.75
11	12.50	15.00
12	13.75	16.25
13	15.00	17.50
14	16.25	18.75
15	17.50	20.00

#### Materials 材質

樹脂材: ナイロン (白)

Housing: PBT UL94V-0 Natural

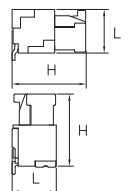
#### Ordering Informatuon



#### Mating with

#### 嵌合相手型番と寸法

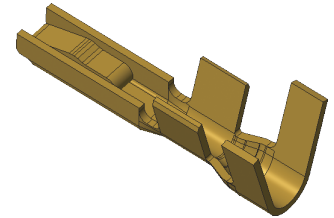
	基板側コネクタ Header	ハウジング Housing	H (mm)	L (mm)
サイド型 Side entry type	GPDD101-XXXXA001JUAX	GHD361-XXAAJ-N	7.15	4.35
トップ型 Top entry type	GPDC101-XXXXA001JUAX		7.3	4.25



# 1.25 mm

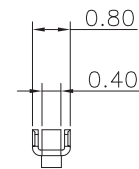
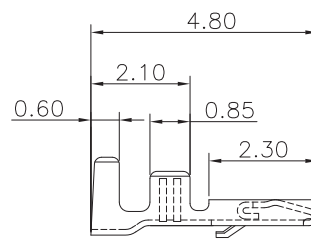
## コンタクト / Contact

### GRD601 Series



#### Specifications 一般仕様

定格電流	Current Rating: 1.0A AC/DC (AWG#26)
定格電圧	Volatage Rating: 50V AC/DC
使用温度範囲	Temp. Range: -25°C~+85°C
接触抵抗	Contact Resistance:
初期	Initial: Max. 30mΩ
環境試験後	After: 50mΩ
絶縁抵抗	Insulation Resistance: Min. 100MΩ
耐電圧	Withstanding Voltage: 500 VAC/分
適用電線	Applicable wire: AWG#30~#26 O.D. 0.76mm~1.0mm



#### Materials 材質

端子材: リン青銅  
 ニッケル下地 50~100μinch  
 光沢スズ 80~160μinch

Terminal: Phosphor Bronze  
 Nickel underplated all over 50~100μinch  
 Bright Tin plated all over 80~160μinch

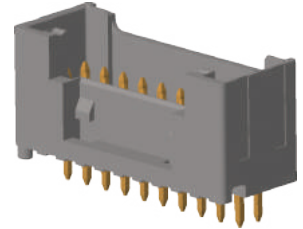
製品型番 Greenconn P/N	電線仕様 Cable SPEC.		被覆外径 Diameter of the cable including insulation(mm)
	mm <sup>2</sup>	AWG#	
GRD601-0129AB-R	0.05~0.13	30 ~ 26	0.76 ~ 1.0

# 2.00 mm

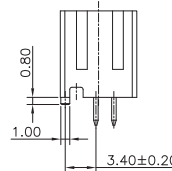
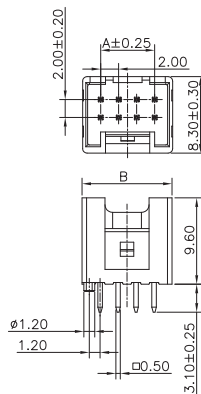
## 基板側コネクタ / Board Side Connector

トップ型 / Top insert

### GWFA214 Series



8, 10 circuits



No. of circuits	Dimension Information	
	A	B
8	6.00	10.00
10	8.00	12.00
12	10.00	14.00
14	12.00	16.00
16	14.00	18.00
18	16.00	20.00
20	18.00	22.00
22	20.00	24.00
24	22.00	26.00
26	24.00	28.00
28	26.00	30.00
30	28.00	32.00
32	30.00	34.00
34	32.00	36.00
36	34.00	38.00
38	36.00	40.00
40	38.00	42.00

### Specifications 一般仕様

定格電流	Current Rating: 3.0A AC/DC (AWG#22)
定格電圧	Volatage Rating: 250V AC/DC
使用温度範囲	Temp. Range: -20°C~+100°C
接触抵抗	Contact Resistance:
初期	Initial: Max. 10mΩ
環境試験後	After: 20mΩ
絶縁抵抗	Insulation Resistance: Min. 100MΩ
耐電圧	Withstanding Voltage: 800 VAC/分
適用電線	Applicable wire:

### Materials 材質

樹脂材: ナイロン (象牙白)  
端子材: 銅合金

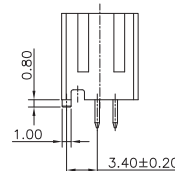
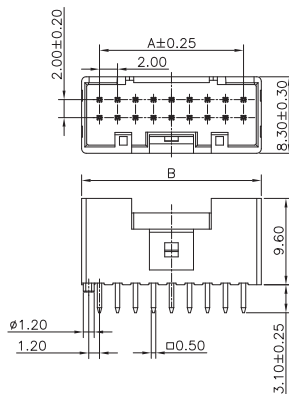
Housing: PA66 UL94V-0 Natural  
Terminal: Brass  
Plating with Copper-undercoated Reflow Sn

### Ordering Informatuon

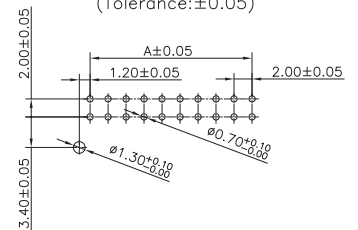
GWFA214 - XX XX B 001 W 4 B X

XX: No. of Pins per Row (04~20)  
 XX: Standard Plating (01=Tin)  
 B: Standard Packing (C=Tube)  
 001: Color (4=Natuer)  
 W: Standard Plating  
 4: Color  
 B: Standard Plating  
 X: Standard Plating

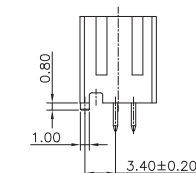
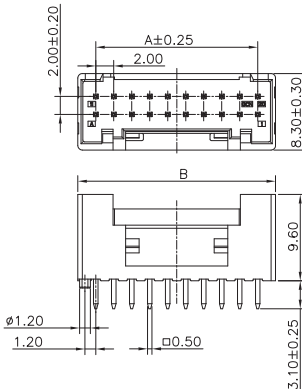
12 to 18 circuits



Recommended P.C.Board Layout  
(Tolerance:±0.05)



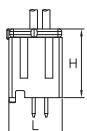
20 to 40 circuits



### Mating with

嵌合相手型番と寸法

トップ型基板コネクタ Top entry type Header	ハウジング Housing	H (mm)	L (mm)
GWFA214-XXXXB001W4BX	GWF192-XXAAJ-N	11	8.3

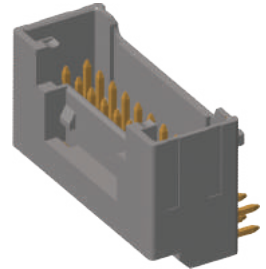


# 2.00 mm

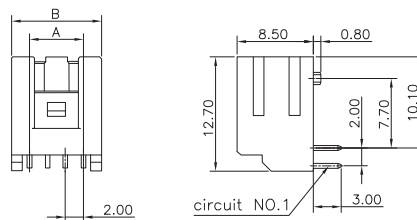
## 基板側コネクタ / Board Side Connector

サイド型 / Side insert

GWFB215 Series



8, 10 circuits



No. of circuits	Dimension Information	
	A	B
8	6.00	10.00
10	8.00	12.00
12	10.00	14.00
14	12.00	16.00
16	14.00	18.00
18	16.00	20.00
20	18.00	22.00
22	20.00	24.00
24	22.00	26.00
26	24.00	28.00
28	26.00	30.00
30	28.00	32.00
32	30.00	34.00
34	32.00	36.00
36	34.00	38.00
38	36.00	40.00
40	38.00	42.00

### Specifications 一般仕様

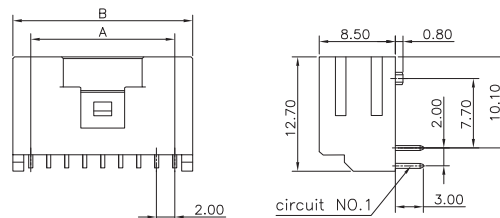
定格電流	Current Rating: 3.0A AC/DC (AWG#22)
定格電圧	Volatage Rating: 250V AC/DC
使用温度範囲	Temp. Range: -20°C~+100°C
接触抵抗	Contact Resistance:
初期	Initial: Max. 10mΩ
環境試験後	After: 20mΩ
絶縁抵抗	Insulation Resistance: Min. 100MΩ
耐電圧	Withstanding Voltage: 800 VAC/分
適用電線	Applicable wire:

### Materials 材質

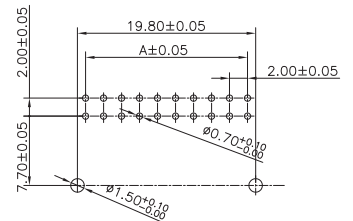
樹脂材: ナイロン (象牙白)  
端子材: 銅合金

Housing: PA66 UL94V-0 Natural  
Terminal: Brass  
Plating with Copper-undercoated Reflow Sn

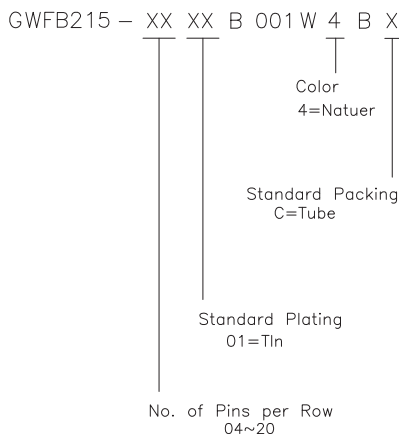
12 to 18 circuits



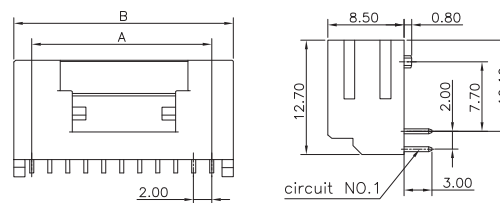
Recommended P.C.Board Layout  
(Tolerance: ±0.05)



### Ordering Informatuon



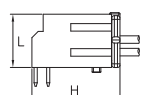
20 to 40 circuits



### Mating with

嵌合相手型番と寸法

トップ型基板コネクタ Top entry type Header	ハウジング Housing	H (mm)	L (mm)
GWFB215-XXXXB001W4BX	GWFB192-XXAAJ-N	11	8.3

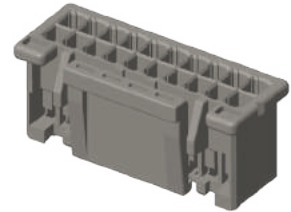




# 2.00 mm

## ハウジング / Housing

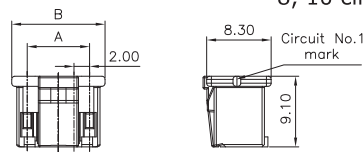
### GWF192 Series



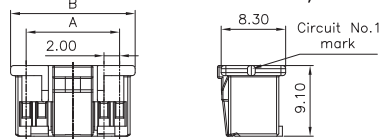
#### Specifications 一般仕様

定格電流	Current Rating: 3.0A AC/DC (AWG#22)
定格電圧	Volatage Rating: 250V AC/DC
使用温度範囲	Temp. Range: -20°C~+100°C
接触抵抗	Contact Resistance:
初期	Initial: Max. 10mΩ
環境試験後	After: 20mΩ
絶縁抵抗	Insulation Resistance: Min. 100MΩ
耐電圧	Withstanding Voltage: 800 VAC/分
適用電線	Applicable wire:

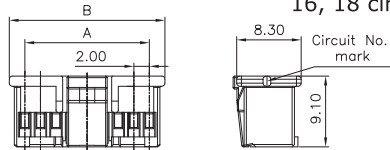
#### 8, 10 circuits



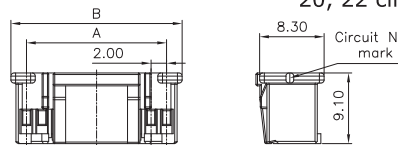
#### 12, 14 circuits



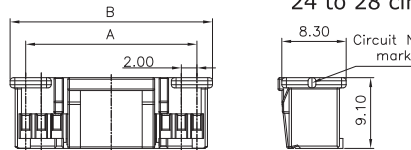
#### 16, 18 circuits



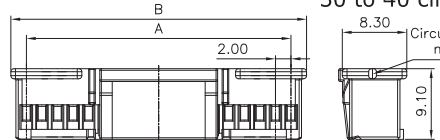
#### 20, 22 circuits



#### 24 to 28 circuits



#### 30 to 40 circuits



No. of circuits	Dimension Information	
	A	B
8	6.00	10.00
10	8.00	12.00
12	10.00	14.00
14	12.00	16.00
16	14.00	18.00
18	16.00	20.00
20	18.00	22.00
22	20.00	24.00
24	22.00	26.00
26	24.00	28.00
28	26.00	30.00
30	28.00	32.00
32	30.00	34.00
34	32.00	36.00
36	34.00	38.00
38	36.00	40.00
40	38.00	42.00

#### Materials 材質

樹脂材: ナイロン (白)

Housing: PBT UL94V-0 Natural

#### Ordering Informatuon

GWF192 - XX A A J - X

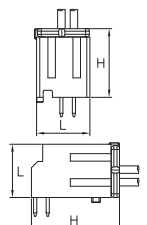
Standard Packing  
N=PE bag

No. of Pins per Row  
04~20

#### Mating with

#### 嵌合相手型番と寸法

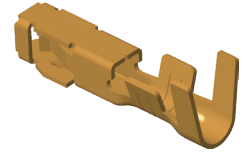
	基板側コネクタ Header	ハウジング Housing	H (mm)	L (mm)
サイド型 Side entry type	GWFA214-XXXXB001W4BX	GWF192-XXAAJ-N	11	8.3
トップ型 Top entry type	GWFB215-XXXXB001W4BX			



# 2.00 mm

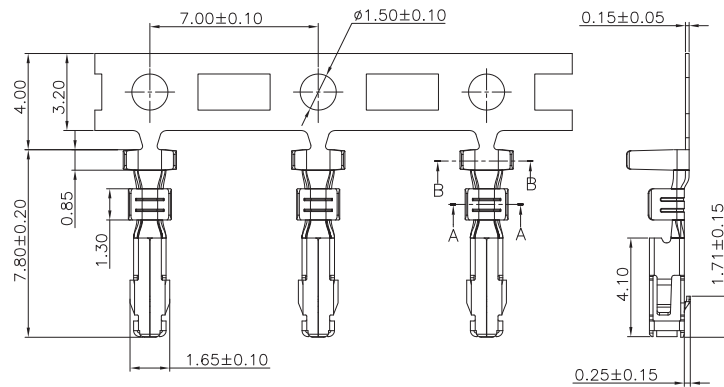
## コンタクト / Contact

### GRF159 Series



#### Specifications 一般仕様

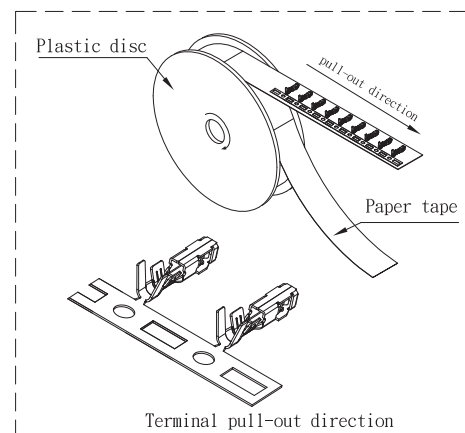
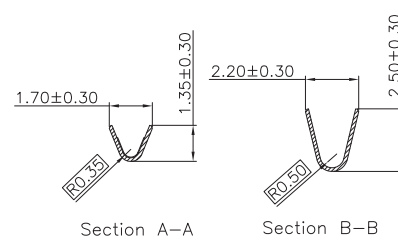
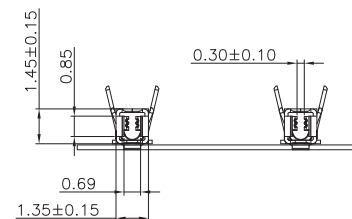
定格電流	Current Rating: 3.0A AC/DC (AWG#22)
定格電圧	Volatage Rating: 250V AC/DC
使用温度範囲	Temp. Range: -20°C~+100°C
接触抵抗	Contact Resistance:
初期	Initial: Max. 10mΩ
環境試験後	After: 20mΩ
絶縁抵抗	Insulation Resistance: Min. 100MΩ
耐電圧	Withstanding Voltage: 800 VAC/分
適用電線	Applicable wire:



#### Materials 材質

端子材: リン青銅  
 ニッケル下地 50~100μinch  
 光沢スズ 80~160μinch

Terminal: Phosphor Bronze  
 Nickel underplated all over 50~100μinch  
 Bright Tin plated all over 80~160μinch



製品型番 Greenconn P/N	電線仕様 Cable SPEC.		被覆外径 Diameter of the cable including insulation(mm)
	mm <sup>2</sup>	AWG#	
GRF159-0101AB-R	0.13~0.33	26 ~ 22	0.95 ~ 1.5
GRF159-0201AB-R	0.08~0.22	28 ~ 24	0.76 ~ 1.5