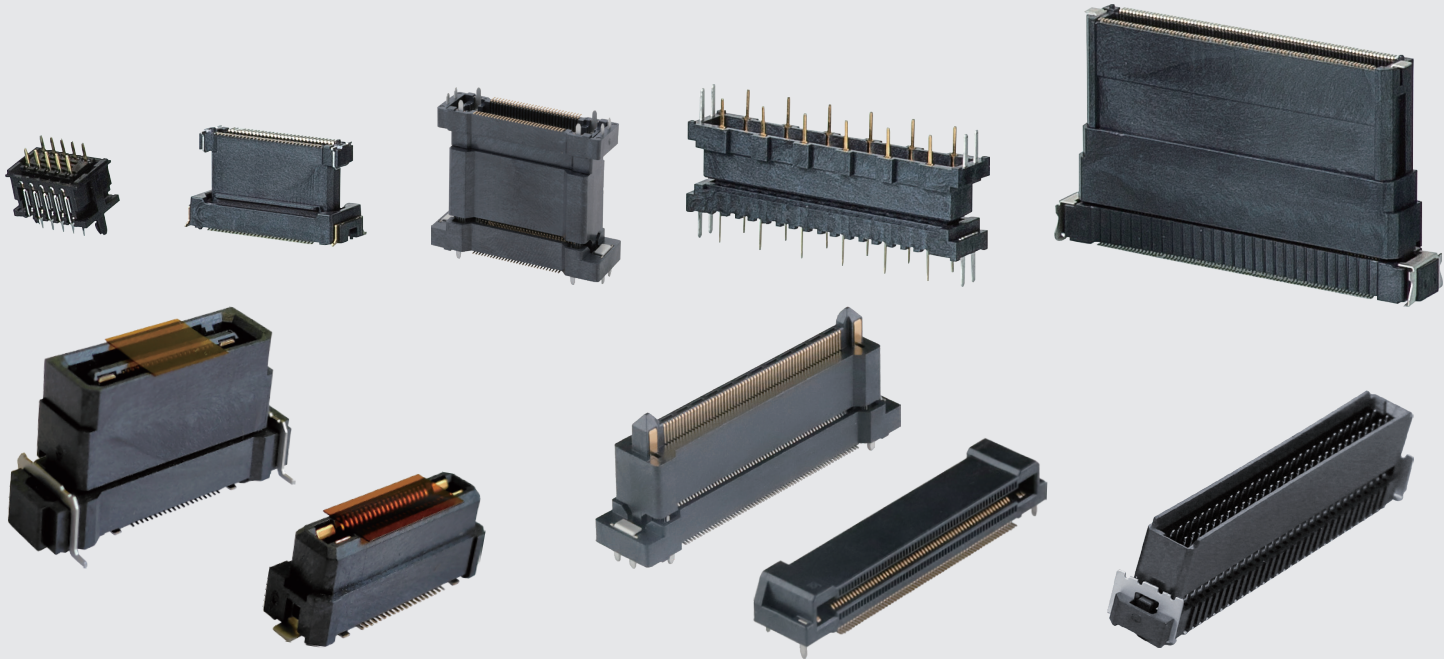


Floating Connectors

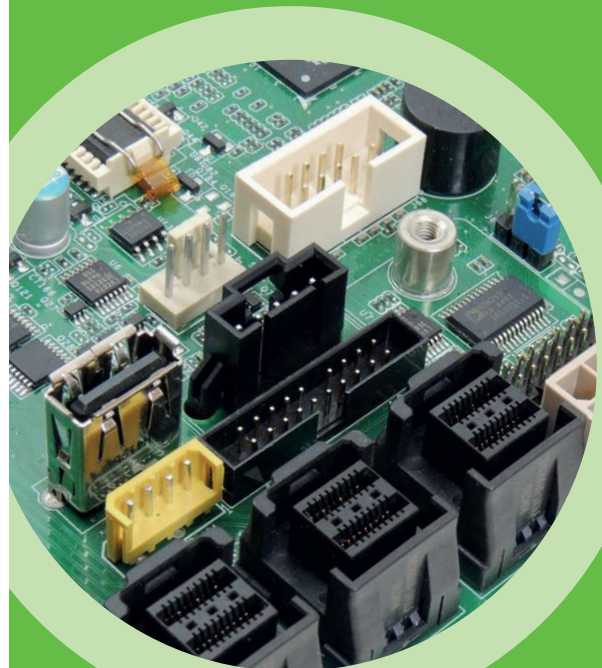
Pitch: 0.50mm; Mating Height: 7.65/10.0/14.0/15.0/18.0/19.0/20.0/25.0/30.0mm
Pitch: 0.635mm; Mating Height: 6.3/10.0/15.0mm
Pitch: 0.80mm; Mating Height: 8.0/9.0/10.2/11.75/12.75/13.95/14.0/17.7/20.95/24.7mm
Pitch: 1.27mm; Mating Height: 10.93/13.73/18.38/19.08mm



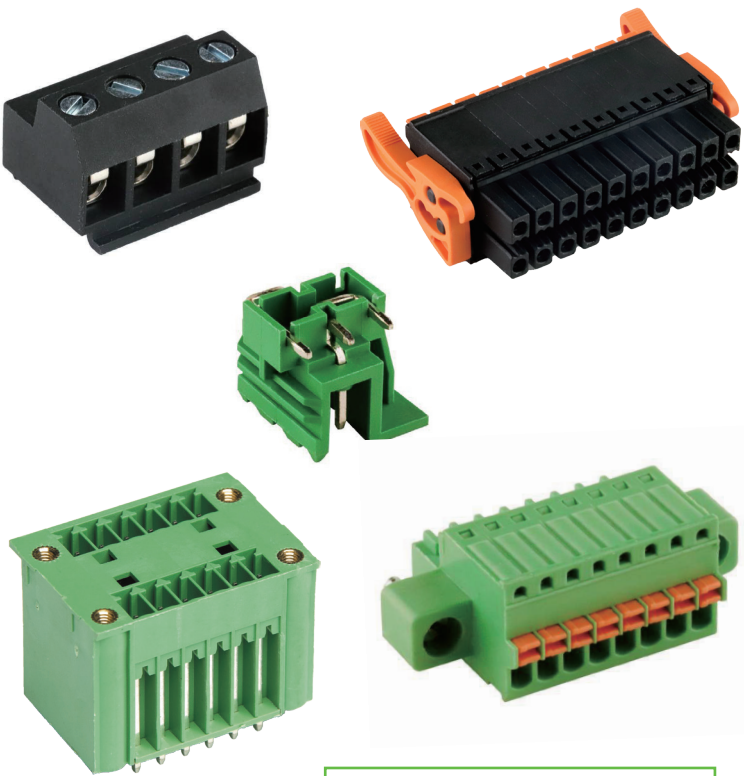
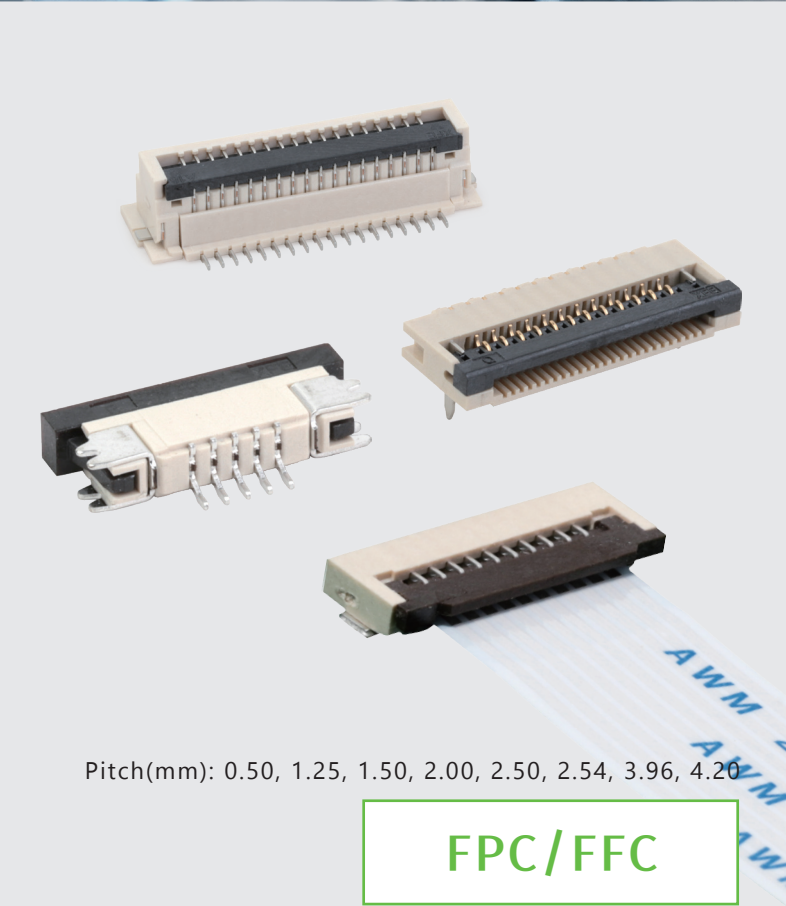
About Greenconn

Established in 1998, Greenconn is a leading provider of connector solutions, offering highly reliable interconnect products and customized solutions with its vertically integrated supply chain advantages. Our main products cover automotive, floating, high-speed, IDC, I/O and other board-to-board/wire-to-board connectors, widely used in industrial, automotive, telecommunication, medical and consumer electronics.

At Greenconn, quality is of the essence. From product design and development, tooling manufacturing, terminal stamping, surface plating, and injection molding, to assembly automation and packaging, we provide customers with one-stop production services and strictly adhere to international standards such as ISO 9001, IATF 16949, ISO 45001, ISO 13485, and other quality requirements to ensure product quality.



Automotive Connectors
Board-to-Board Connectors
Floating Connectors
High-Speed Connectors
I/O Connectors
Wire-to-Board Connectors



Pitch(mm): 0.50, 1.25, 1.50, 2.00, 2.50, 2.54, 3.96, 4.26

FPC/FFC

Terminal Blocks



- Factory**
Ganzhou · China
Hai Duong · Vietnam
- Sales & Service**
New Taipei · Taiwan
Kunshan · China
Shenzhen · China
- Direct Sales Office**
Osaka · Japan
Nanjing · China
Wuhan · China
Chongqing · China
Munich · Germany
Houston · USA



www.greenconn.com
sales@greenconn.com

China
TEL +86-755-2321 9802
FAX +86-755-2308 0709

Taiwan
TEL +886 -2 -2209 1343
FAX +886 -2 -2903 0754

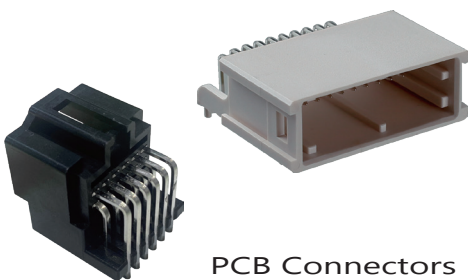
Automotive Connectors



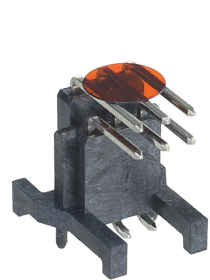
Waterproof Wire-to-Wire

Rast Connectors

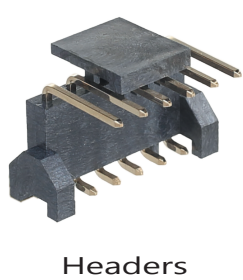
Wire-to-Board Connectors



PCB Connectors



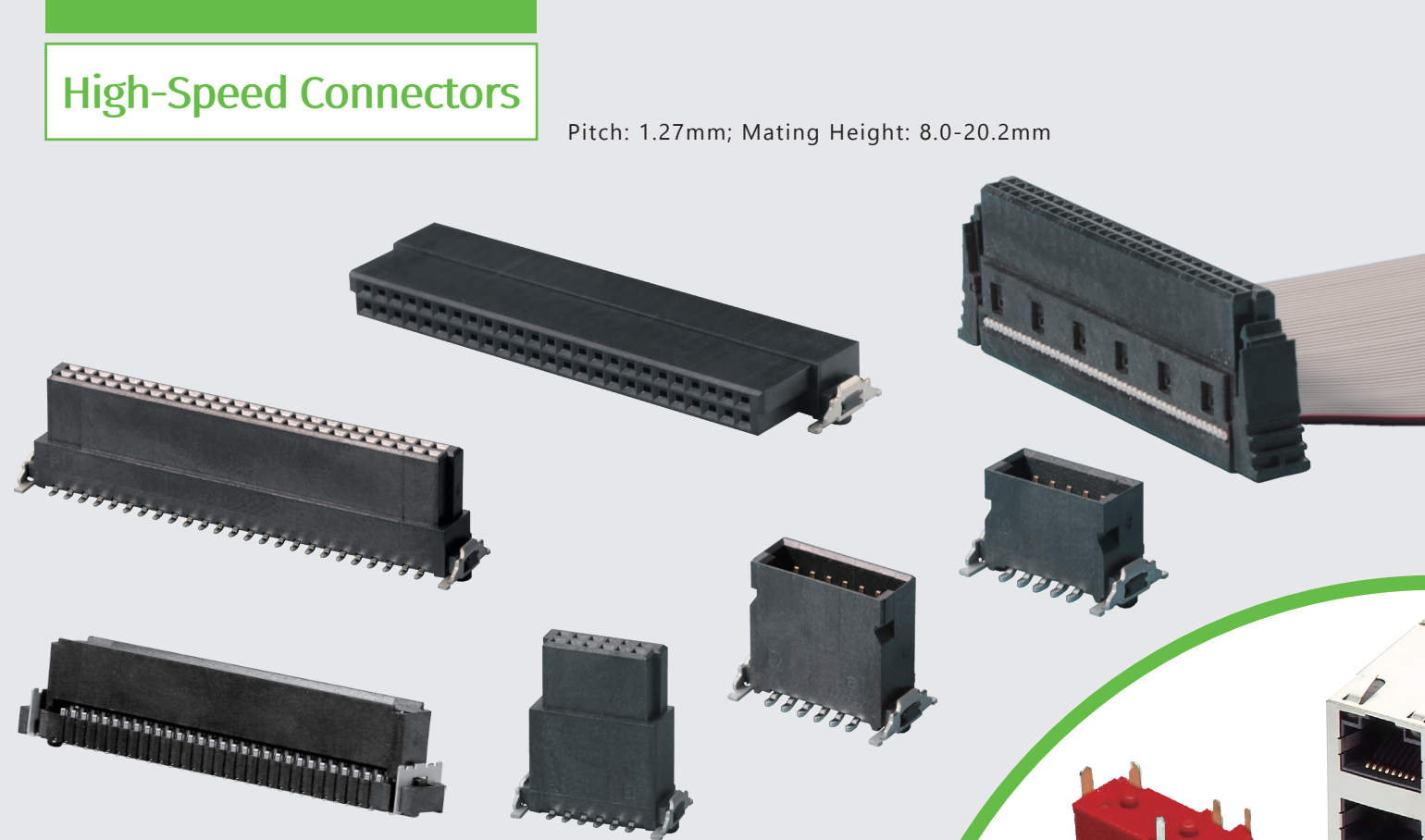
Headers



Press-Fit

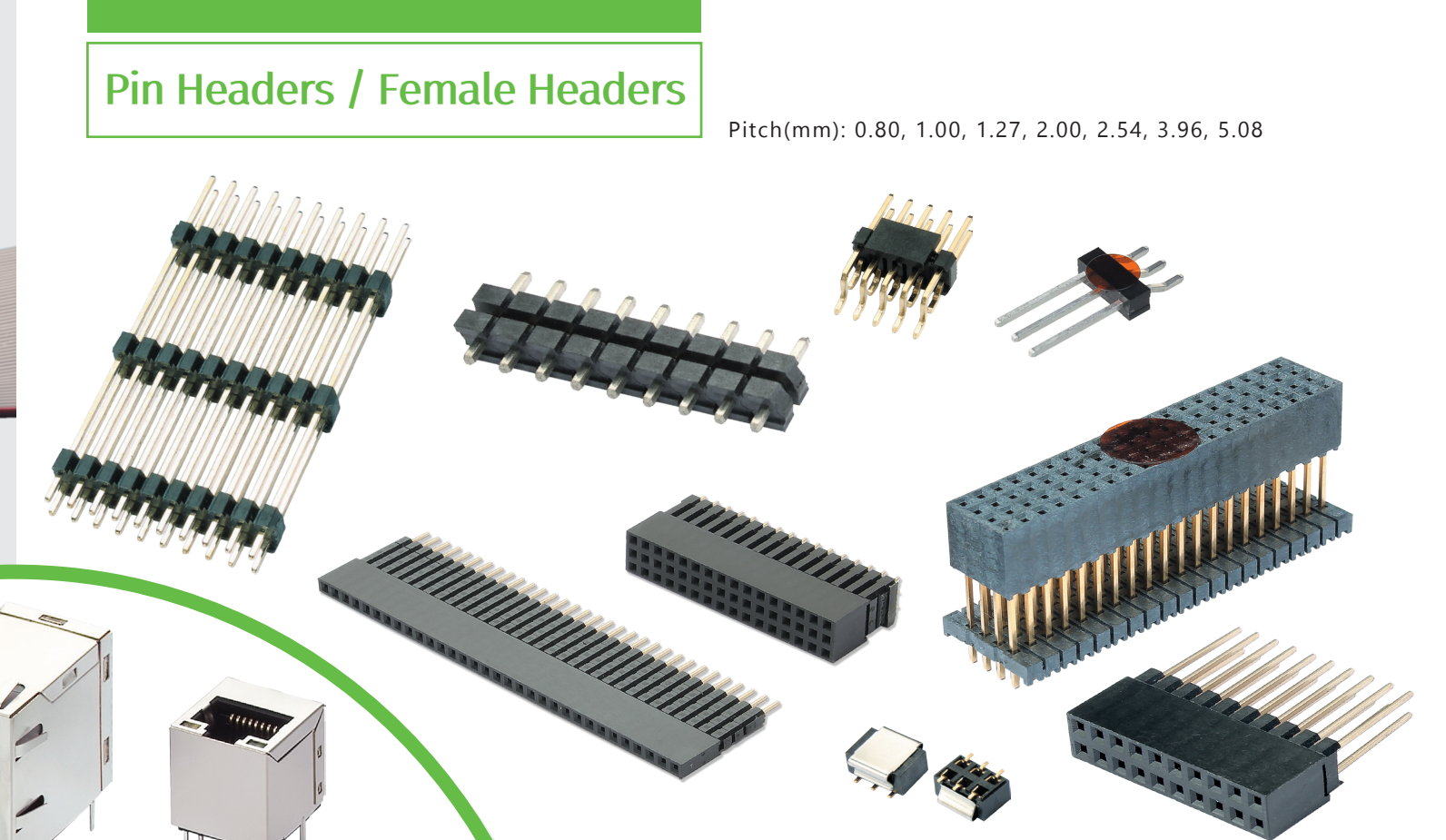
High-Speed Connectors

Pitch: 1.27mm; Mating Height: 8.0-20.2mm

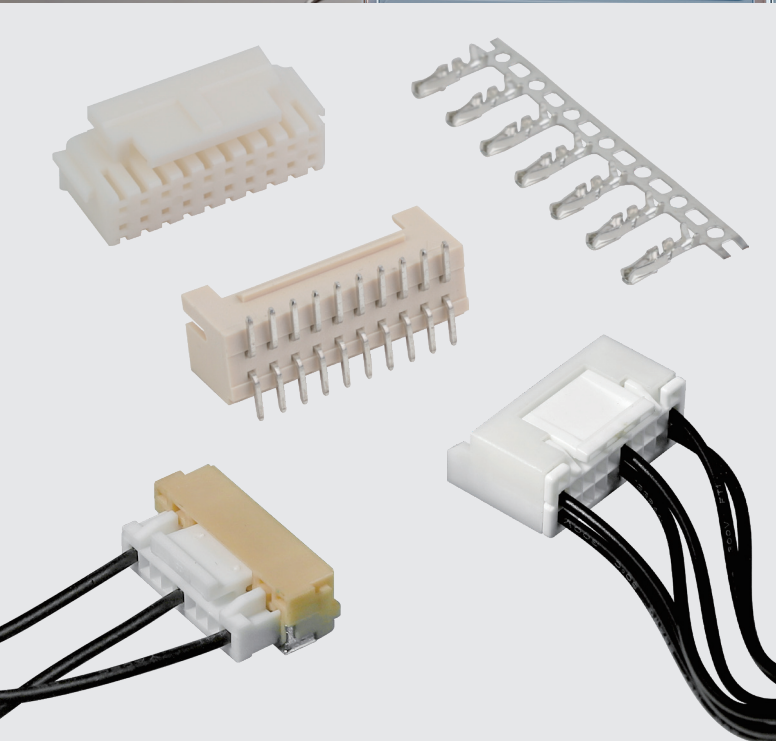


Pin Headers / Female Headers

Pitch(mm): 0.80, 1.00, 1.27, 2.00, 2.54, 3.96, 5.08

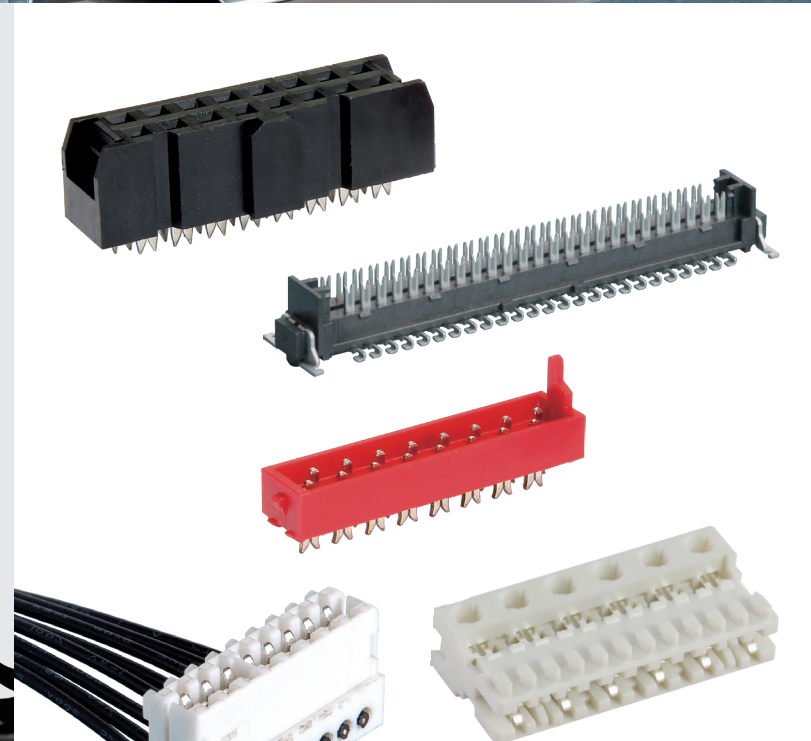


I/O Connectors



Pitch(mm): 0.80, 1.00, 1.25, 1.27, 1.80, 2.00, 2.54, 3.96, 5.08

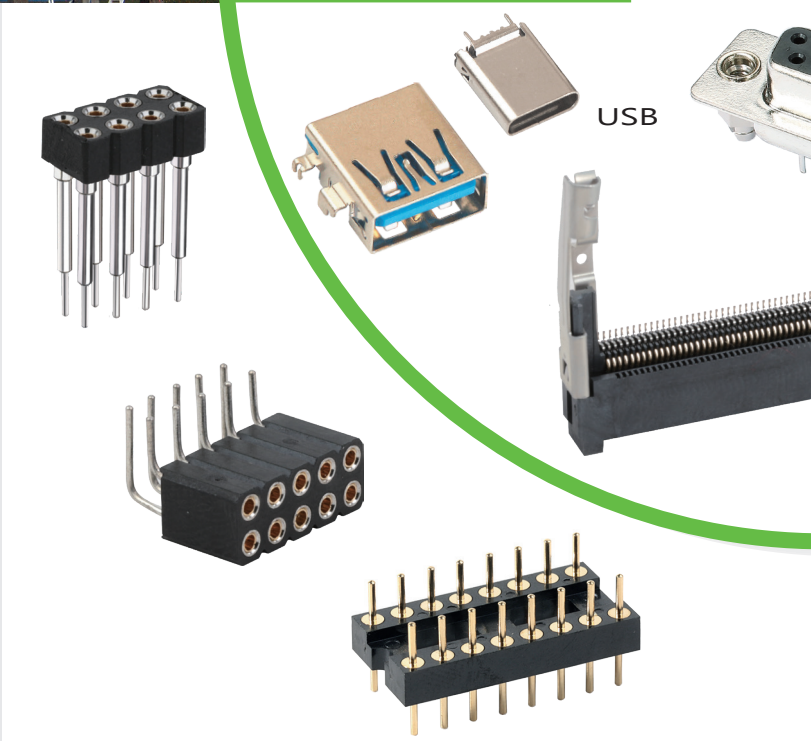
Wafer



IDC

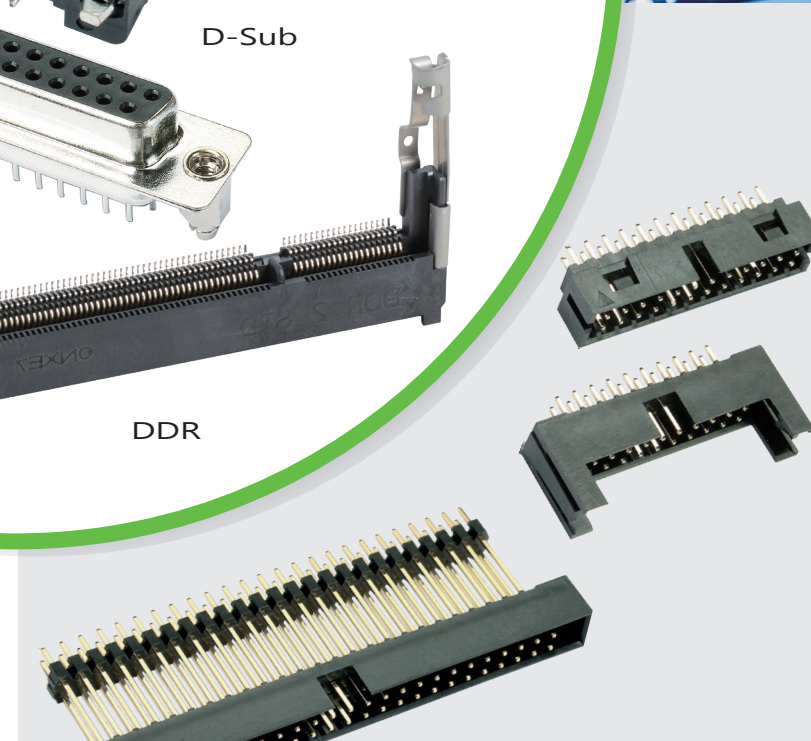


PCI



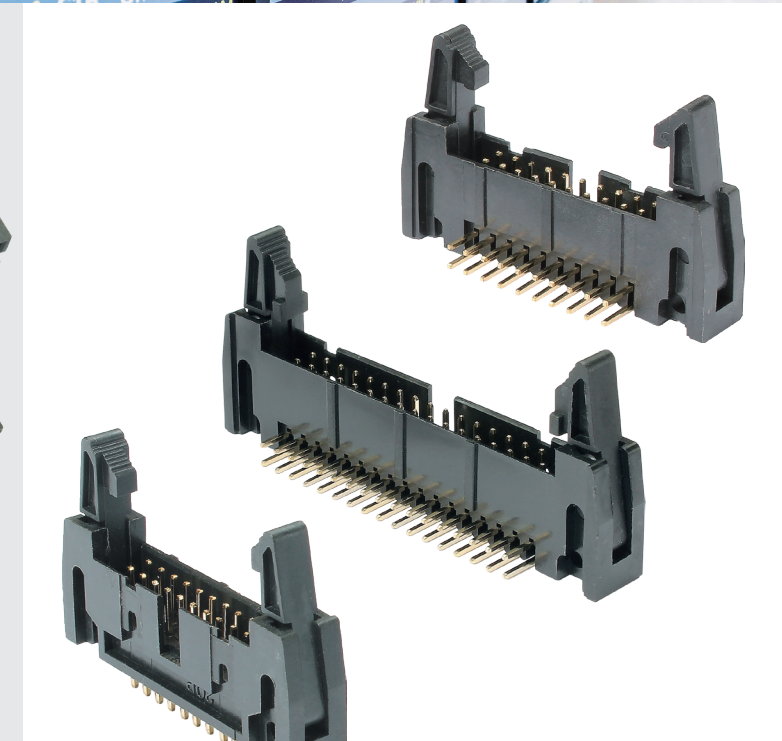
Pitch(mm): 1.27, 2.00, 2.54

Machined Pin Headers



Pitch(mm): 1.27, 2.00, 2.54

Box Headers



Ejector Headers