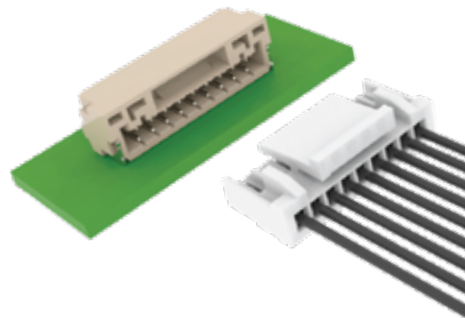


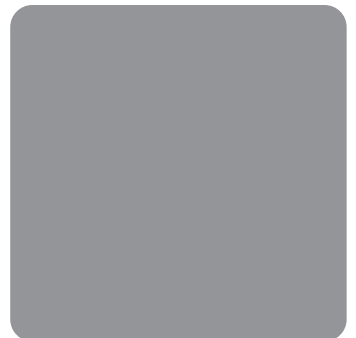
Wire to Board Connectors

Wafer



# Greenconn ▶

Product Selection Guide  
2024



[www.greenconn.com](http://www.greenconn.com)

1.25 / 2.00mm Pitch Solutions

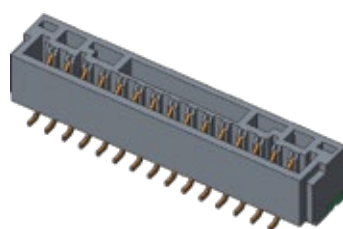
# Wire to Board Connectors

1.25 mm

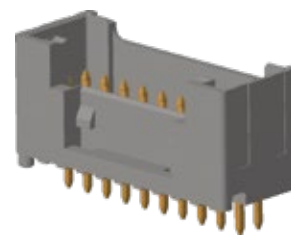
2.00 mm

Board Side Connector ▼

Top-Entry

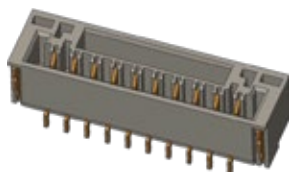


GPDC101 Series



GWFA214 Series

Side-Entry

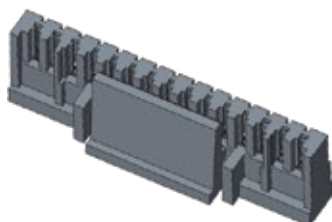


GPDD101 Series

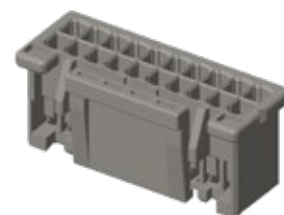


GWFB215 Series

Housing ▼

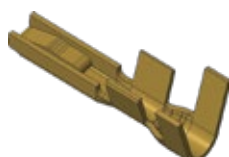


GHD361 Series

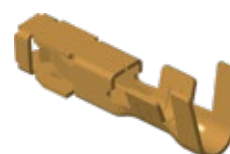


GWF192 Series

Contact ▼



GRD601 Series



GRF159 Series

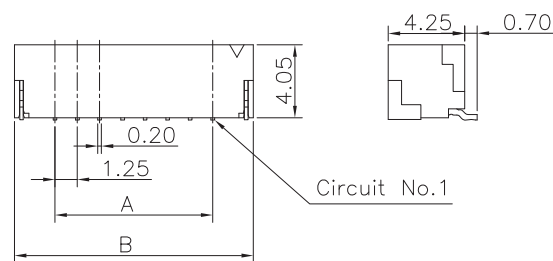
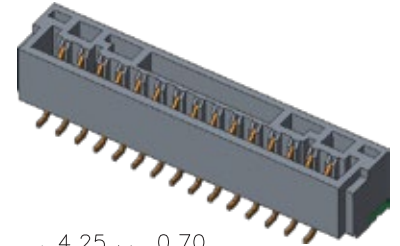
# 1.25 mm

## Board Side Connector

Top-Entry

Crimp / SMT

### GPDC101 Series



No. of circuits	Dimensions (mm)	
	A	B
2	1.25	5.75
3	2.50	7.00
4	3.75	8.25
5	5.00	9.50
6	6.25	10.75
7	7.50	12.00
8	8.75	13.25
9	10.00	14.50
10	11.25	15.75
11	12.50	17.00
12	13.75	18.25
13	15.00	19.50
14	16.25	20.75
15	17.50	22.00

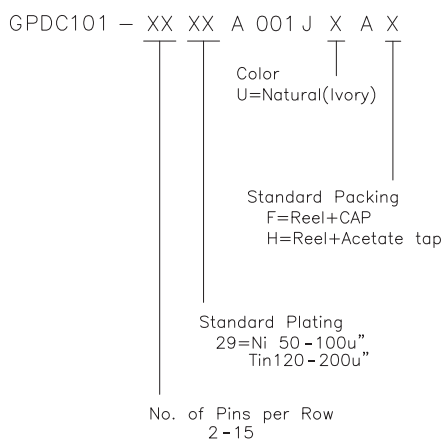
### Specifications

Current Rating: 1.0A AC/DC (26AWG)  
 Voltage Rating: 50V AC/DC  
 Temp. Range: -25°C to +85°C  
 Contact Resistance:  
 Initial: Max. 30mΩ  
 After: 50mΩ  
 Insulation Resistance: Min. 100MΩ  
 Withstanding Voltage: 500 VAC/min.  
 Applicable Wire:  
 30 AWG - 26 AWG O.D. 0.76mm-1.0mm

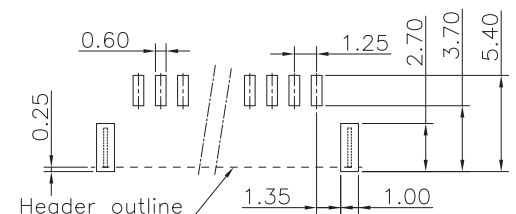
### Materials

Housing: PA9T UL94V-0 Natural  
 Terminal: Phosphor Bronze  
 Plating with Copper-undercoated Reflow Sn

### Ordering Information

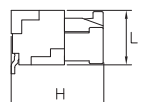


Recommended P.C.Board Layout  
(Tolerance:±0.05)



### Mates with

Side-entry Type Header	Housing	H (mm)	L (mm)
GPDC101-XXXXA001JUAX	GHD361-XXAAJ-N	7.3	4.25

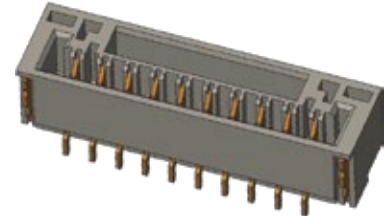


# 1.25 mm

## Board Side Connector

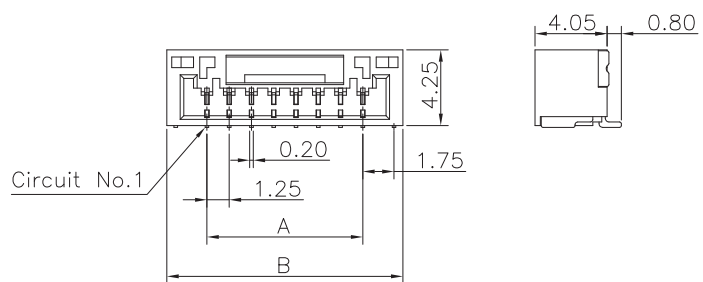
Side-Entry

GPDD101 Series



### Specifications

Current Rating: 1.0A AC/DC (26AWG)  
 Voltage Rating: 50V AC/DC  
 Temp. Range: -25°C to +85°C  
 Contact Resistance:  
 Initial: Max. 30mΩ  
 After: 50mΩ  
 Insulation Resistance: Min. 100MΩ  
 Withstanding Voltage: 500 VAC/min.  
 Applicable Wire:  
 30 AWG - 26 AWG O.D. 0.76mm-1.0mm

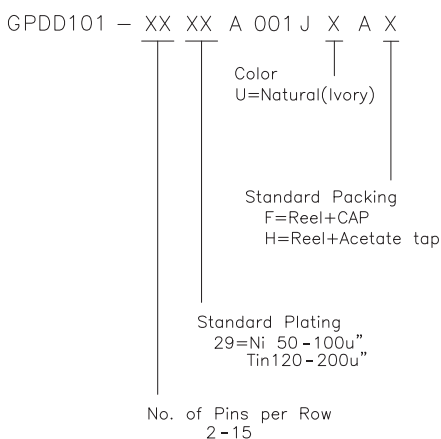


No. of circuits	Dimensions (mm)	
	A	B
2	1.25	5.75
3	2.50	7.00
4	3.75	8.25
5	5.00	9.50
6	6.25	10.75
7	7.50	12.00
8	8.75	13.25
9	10.00	14.50
10	11.25	15.75
11	12.50	17.00
12	13.75	18.25
13	15.00	19.50
14	16.25	20.75
15	17.50	22.00

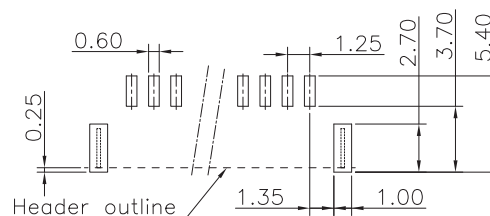
### Materials

Housing: PA9T UL94V-0 Natural  
 Terminal: Phosphor Bronze  
 Plating with Copper-undercoated Reflow Sn

### Ordering Information

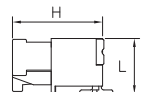


Recommended P.C.Board Layout  
(Tolerance:±0.05)



### Mates with

Side-entry Type Header	Housing	H (mm)	L (mm)
GPDD101-XXXXA001JUAX	GHD361-XXAAJ-N	7.15	4.35

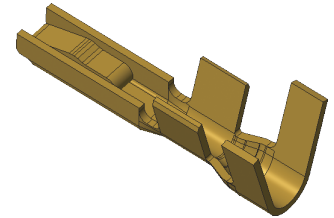




# 1.25 mm

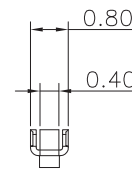
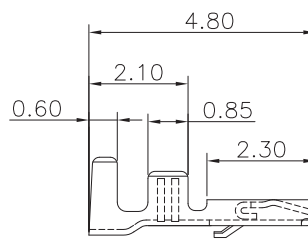
## Contact

### GRD601 Series



#### Specifications

Current Rating: 1.0A AC/DC (26AWG)  
 Voltage Rating: 50V AC/DC  
 Temp. Range: -25°C to +85°C  
 Contact Resistance:  
 Initial: Max. 30mΩ  
 After: 50mΩ  
 Insulation Resistance: Min. 100MΩ  
 Withstanding Voltage: 500 VAC/min.  
 Applicable Wire:  
 30 AWG - 26 AWG O.D. 0.76mm-1.0mm



#### Materials

Terminal: Phosphor Bronze  
 Nickel underplated all over 50 - 100μ"  
 Bright Tin plated all over 80 - 160μ"

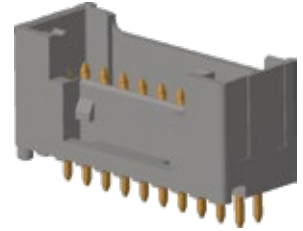
Greenconn P/N	Cable SPEC.		Diameter of the cable including insulation(mm)
	mm <sup>2</sup>	AWG	
GRD601-0129AB-R	0.05 - 0.13	30 - 26	0.76 - 1.0

# 2.00 mm

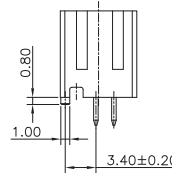
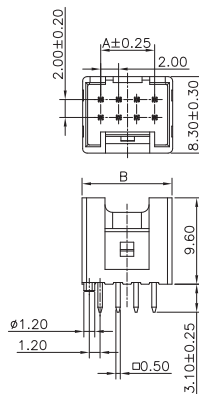
## Board Side Connector

Top insert

### GWFA214 Series



8, 10 circuits



No. of circuits	Dimension Information	
	A	B
8	6.00	10.00
10	8.00	12.00
12	10.00	14.00
14	12.00	16.00
16	14.00	18.00
18	16.00	20.00
20	18.00	22.00
22	20.00	24.00
24	22.00	26.00
26	24.00	28.00
28	26.00	30.00
30	28.00	32.00
32	30.00	34.00
34	32.00	36.00
36	34.00	38.00
38	36.00	40.00
40	38.00	42.00

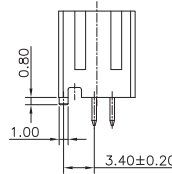
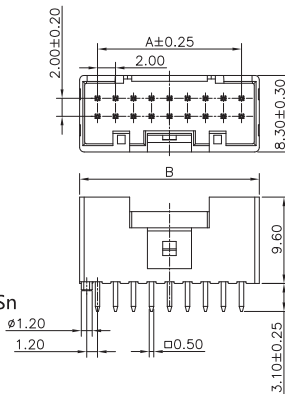
### Specifications

Current Rating: 3.0A AC/DC (22AWG)  
 Voltage Rating: 250V AC/DC  
 Temp. Range: -20°C to +100°C  
 Contact Resistance:  
 Initial: Max. 10mΩ  
 After: 20mΩ  
 Insulation Resistance: Min. 100MΩ  
 Withstanding Voltage: 800 VAC/min.

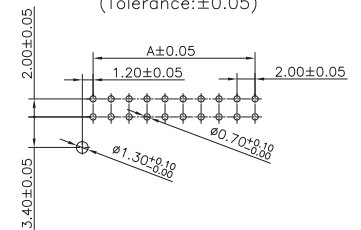
### Materials

Housing: PA66 UL94V-0 Natural  
 Terminal: Brass  
 Plating with Copper-undercoated Reflow Sn

12 to 18 circuits



Recommended P.C.Board Layout  
 (Tolerance:  $\pm 0.05$ )



### Ordering Information

GWFA214 - XX XX B 001 W 4 B X

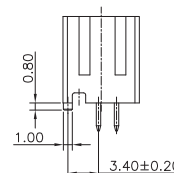
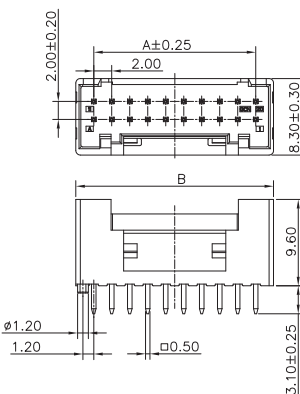
Color  
 4=Natuer

Standard Packing  
 C=Tube

Standard Plating  
 01=TIn

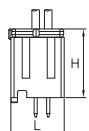
No. of Pins per Row  
 04-20

20 to 40 circuits



### Mates with

Top-entry Type Header	Housing	H (mm)	L (mm)
GWFA214-XXXXB001W4BX	GWF192-XXAAJ-N	11	8.3

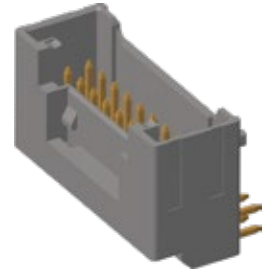


# 2.00 mm

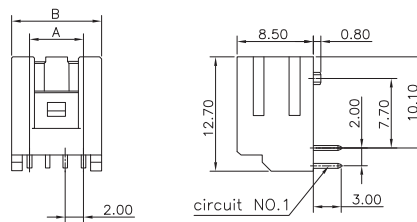
## Board Side Connector

Side insert

### GWFB215 Series



8, 10 circuits



No. of circuits	Dimension Information	
	A	B
8	6.00	10.00
10	8.00	12.00
12	10.00	14.00
14	12.00	16.00
16	14.00	18.00
18	16.00	20.00
20	18.00	22.00
22	20.00	24.00
24	22.00	26.00
26	24.00	28.00
28	26.00	30.00
30	28.00	32.00
32	30.00	34.00
34	32.00	36.00
36	34.00	38.00
38	36.00	40.00
40	38.00	42.00

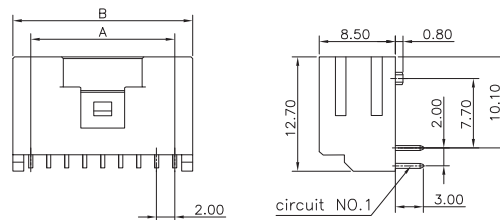
### Specifications

Current Rating: 3.0A AC/DC (22AWG)  
 Voltage Rating: 250V AC/DC  
 Temp. Range: -20°C to +100°C  
 Contact Resistance:  
 Initial: Max. 10mΩ  
 After: 20mΩ  
 Insulation Resistance: Min. 100MΩ  
 Withstanding Voltage: 800 VAC/min.

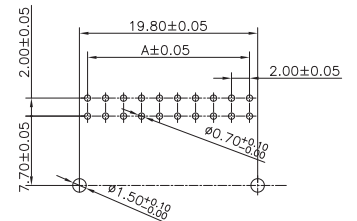
### Materials

Housing: PA66 UL94V-0 Natural  
 Terminal: Brass  
 Plating with Copper-undercoated Reflow Sn

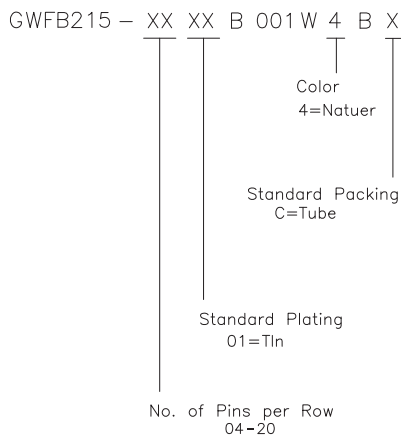
12 to 18 circuits



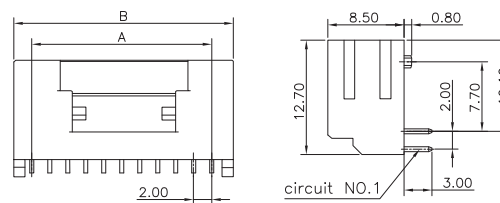
Recommended P.C.Board Layout  
 (Tolerance: ±0.05)



### Ordering Information

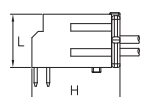


20 to 40 circuits



### Mates with

Top-entry Type Header	Housing	H (mm)	L (mm)
GWFB215-XXXXB001W4BX	GWFB192-XXAAJ-N	11	8.3



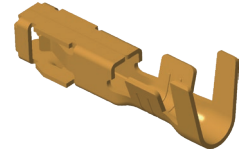




# 2.00 mm

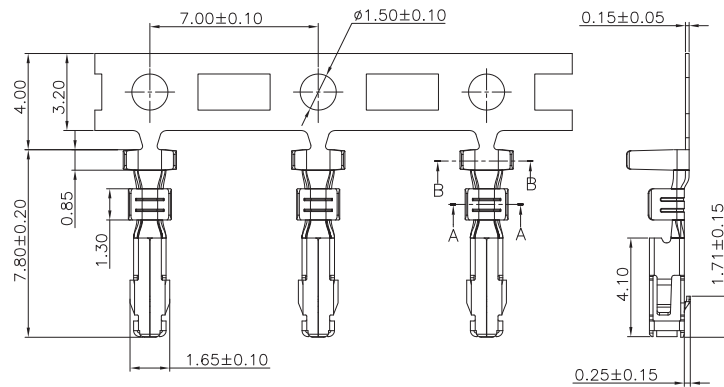
## Contact

### GRF159 Series



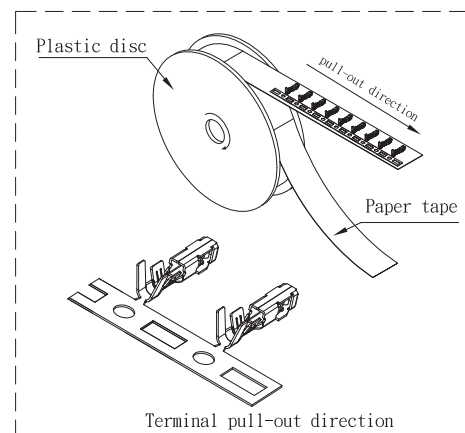
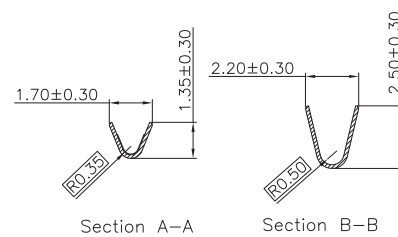
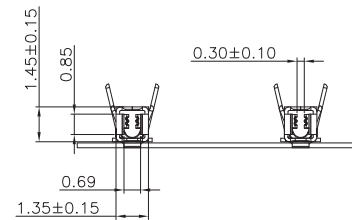
#### Specifications

Current Rating: 3.0A AC/DC (22AWG)  
 Voltage Rating: 250V AC/DC  
 Temp. Range: -20°C to +100°C  
 Contact Resistance:  
 Initial: Max. 10mΩ  
 After: 20mΩ  
 Insulation Resistance: Min. 100MΩ  
 Withstanding Voltage: 800 VAC/min.



#### Materials

Terminal: Phosphor Bronze  
 Nickel underplated all over 50 - 100μ"  
 Bright Tin plated all over 80 - 160μ"



Greenconn P/N	Cable SPEC.		Diameter of the cable including insulation(mm)
	mm <sup>2</sup>	AWG	
GRF159-0101AB-R	0.13 - 0.33	26 - 22	0.95 - 1.5
GRF159-0201AB-R	0.08 - 0.22	28 - 24	0.76 - 1.5