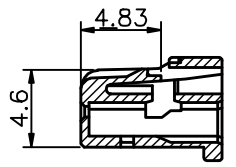
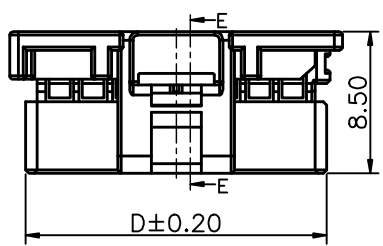
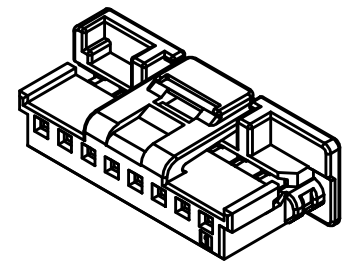


1 2 3 4 5 6 7 8 9

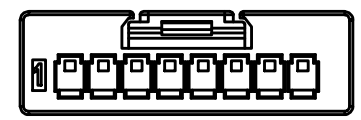
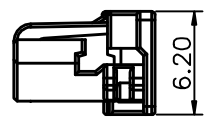
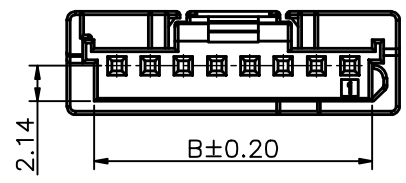
F
E
D
C
B
A



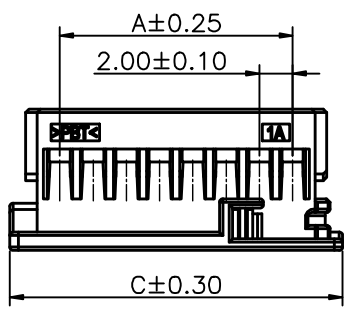
SECTION E-E
SCALE 1 : 1



Specifications
 Contact resistance: $\leq 10\text{m}\Omega$
 Insulation resistance: $\geq 1000\text{M}\Omega$
 Rated voltage: 125V AC/DC
 Rated current: 3.0A AC/DC
 Withstanding Voltage: 500V AC/minute
 Temperature Range: $-40^{\circ}\text{C} - +125^{\circ}\text{C}$
 Housing: PBT with glass fill, UL 94 V-0, Natural colour
 Notes:
 1. Interpret dimensions according to ASME Y14.5-2009
 2. Packaging: PE bag



No. of PIN/ROW	Dimension Information			
	A	B	C	D
02	2.00	4.70	8.00	6.10
03	4.00	6.70	10.00	8.10
04	6.00	8.70	12.00	10.10
05	8.00	10.70	14.00	12.10
06	10.00	12.70	16.00	14.10
07	12.00	14.70	18.00	16.10
08	14.00	16.70	20.00	18.10
09	16.00	18.70	22.00	20.10
10	18.00	20.70	24.00	22.10
11	20.00	22.70	26.00	24.10
12	22.00	24.70	28.00	26.10
13	24.00	26.70	30.00	28.10
14	26.00	28.70	32.00	30.10
15	28.00	30.70	34.00	32.10



Ordering Information

HWF18-AFA001-1XXX-A1A5-N-DN

No. of Pins per Row
02~15

 Website: www.greenconn.com E-mail: sales@greenconn.com	3RD.ANG PROJ.	GENERAL TOLERANCE		DESIGNED:	DATE:	DWG. NO. HWF18-AFA001-1-A1	TITLE. 2.0mm MidClik 180 Deg Inline Female Connector
	 PAGE. 1/2	X: ±5.0'	X: ±0.30				
REV. A	UNIT. mm	SCALE. 5:2	.X' ±3.0'	.X ±0.25	APPROVED:	DATE:	PART NO. HWF18-AFA001-1XXX-A1A5-N-DN
			.XX' ±2.0'	.XX ±0.15			
			.XXX' ±1.0'	.XXX ±0.10			

1 2 3 4 5 6 7 8 9

1 2 3 4 5 6 7 8 9

F

2 Circuits

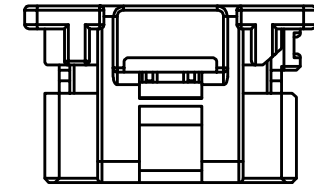
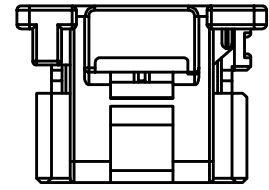
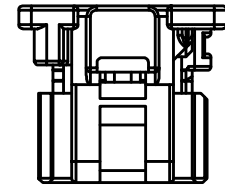
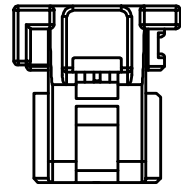
3 Circuits

4 Circuits

5 Circuits

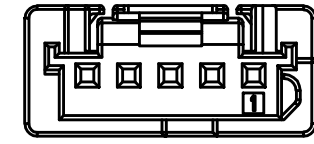
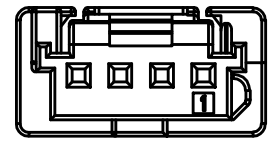
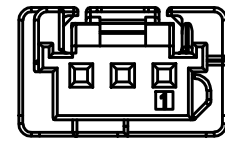
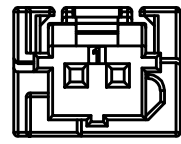
F

E



E

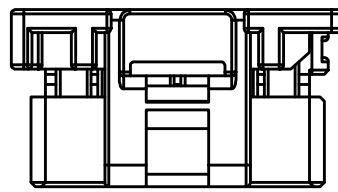
D



D

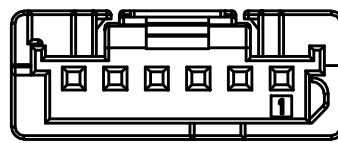
6 Circuits - 15 Circuits

C



C

B



B

A

Greenconn
 Website: www.greenconn.com
 E-mail: sales@greenconn.com

REV. A	UNIT. mm	SCALE. 5:2
--------	----------	------------

3RD.ANG PROJ.

 PAGE. 2/2

GENERAL TOLERANCE	
X. ±5.0'	X. ±0.30
.X' ±3.0'	.X ±0.25
.XX' ±2.0'	.XX ±0.15
.XXX' ±1.0'	.XXX ±0.10

DESIGNED: _____ DATE: _____
 CHECKED: _____ DATE: _____
 APPROVED: _____ DATE: _____

DWG. NO.
 HWF18-AFA001-1-A1

PART NO.
 HWF18-AFA001-1XXX-A1A5-N-DN

TITLE.
 2.0mm MidClik 180
 Deg Inline Female
 Connector

A

1 2 3 4 5 6 7 8 9