

LASER CARVING DESCRIPTION: XX X XX XX

XX-YEAR: 20 = 2020
X-MONTH: A = JAN, B = FEB,.....
XX-DAY: 14 = 14th DAY
XX-HOUR: 14 = 14 PM

Specifications

Current Rating 14 AWG: 13.0Amp AC/DC
16 AWG: 13.0Amp AC/DC
18 AWG: 10.0Amp AC/DC
20 AWG: 7.5Amp AC/DC

Voltage Rating: 250V AC/DC.
Insulation Resistance:1000MΩMin.
Dielectric Withstanding Voltage:1500VAC
Contact Resistance:20mΩMax.
Operating Temperature:-55°C to +125°C

Materials

Insulator Material:High Temperature Thermoplastic, UL 94V-0 PA66 or the equivalent material

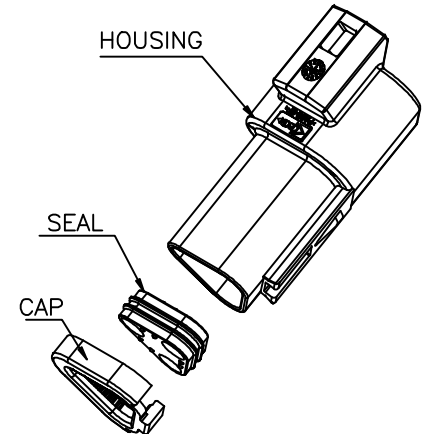
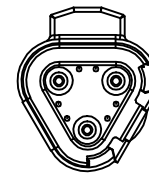
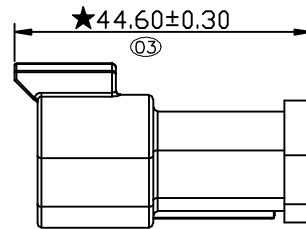
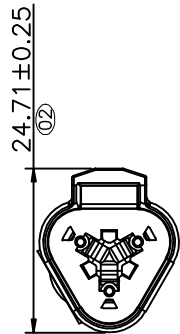
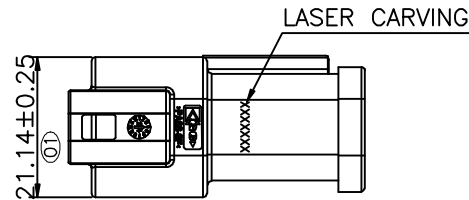
★All materials must meet Greenconn hazardous substances control standards.

★★: Significant Characteristics.

indicates product characteristics, functionalities, and manufacturing processes regarding to customer's specifications

★☆: Safety Features

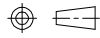
indicates product characteristics, functionalities, and manufacturing processes complying to legal regulations stated by local government



Website:www.greenconn.com
E-mail:sales@greenconn.com

REV. A UNIT. mm SCALE. 1:1

3RD.ANG
PROJ.



PAGE. 1/1

GENERAL TOLERANCE

X'±3.0'	X.±0.30
.X'±2.0'	.X±0.25
.XX'±1.0'	.XX±0.20
.XXX'±0.5'	.XXX±0.15

DESIGNED:

DATE:

CHECKED:

DATE:

APPROVED:

DATE:

DWG. NO.

AGZ021-HA-N

PART NO.

AGZ021-03APA-N

TITLE.

3 WAYRECEPTACLE,
STANDARD SEAL EXTRA
THIN SEAL,SHORT CAP
GT SERIES

1 2 3 4 5 6 7 8 9

F

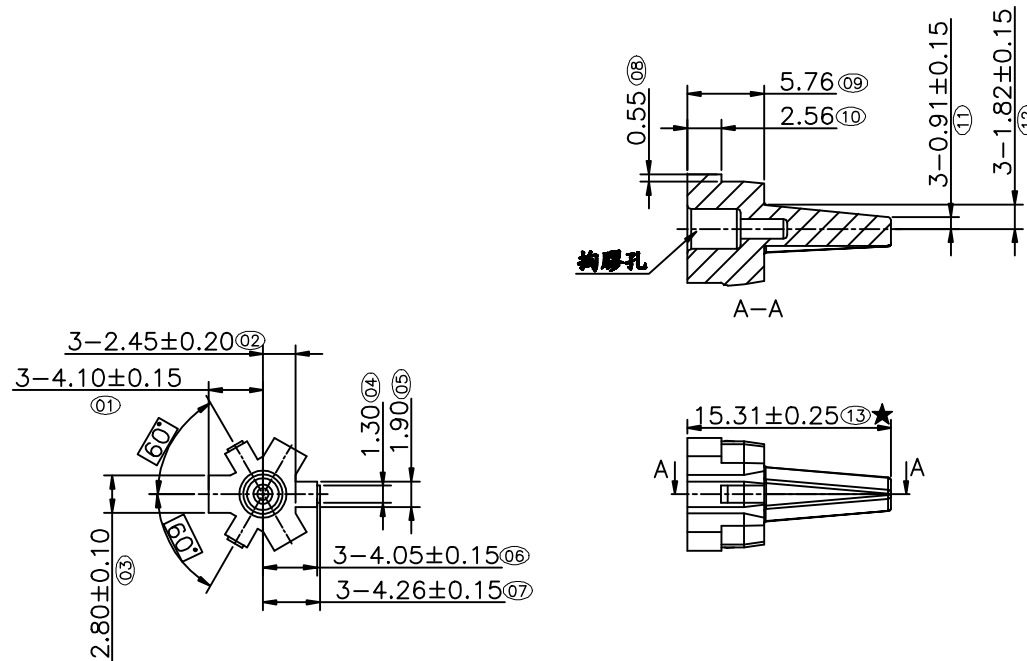
E

D

C

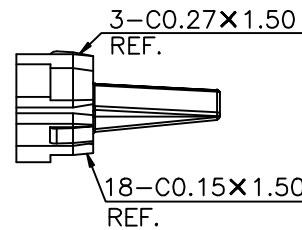
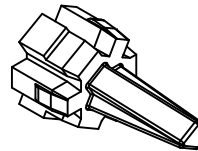
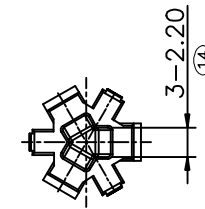
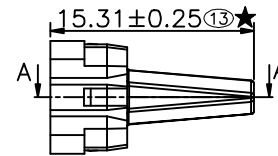
B

A



拘厚孔

A-A



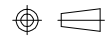
Specifications
Operating Temperature: -55°C to +125°C
Material:
Regular Thermoplastic: Only Suitable for Wave
Soldering Process (PBT).
Color of Material: Green
★ All materials must meet Greenconn requirement
for environment protection.
★ ★: Significant Characteristics.
indicates product characteristics, functionalities, and
manufacturing processes regarding to customer's
specifications
★ ★: Safety Features
indicates product characteristics, functionalities, and
manufacturing processes complying to legal
regulations stated by local government



Website: www.greenconn.com
E-mail: sales@greenconn.com

REV. A UNIT. mm SCALE. 2:1

3RD. ANG
PROJ.



PAGE. 1/1

GENERAL TOLERANCE

X.'±3.0' X.±0.30

.X'±2.0' .X±0.25

.XX'±1.0' .XX±0.20

.XXX'±0.5' .XXX±0.15

DESIGNED:

DATE:

CHECKED:

DATE:

APPROVED:

DATE:

DWG. NO.

AGZ020-HA

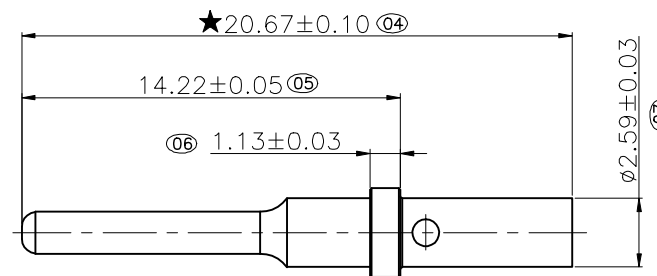
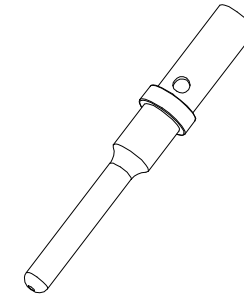
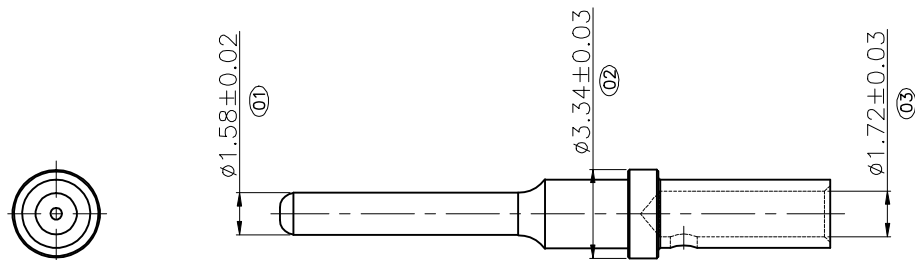
PART NO.

AGZ020-03AAL-N

TITLE.

WEDGE LOCK FOR 3 PIN
RECT HOUSING SERIES

1 2 3 4 5 6 7 8 9



1. Material: Brass.
 2. Plating:
Nickel underplated all over 100~200u"
 3. Tolerance for all radius is $\pm 0.15\text{mm}$ unless otherwise specified.
 - ★ 4. All materials must meet GREENCONN hazardous substances control standards.
- "★": Significant Characteristics.
indicates product characteristics, functionalities, and manufacturing processes regarding to customer's specifications
- "☆": Safety Features
indicates product characteristics, functionalities, and manufacturing processes complying to legal regulations stated by local government

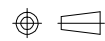
Greenconn's P/N	CABLE SPEC		Diameter of the cable including insulation(mm)
	mm ²	AWG#	
GTZ1E2-01S4BL	2.5~0.5	14~20	0.81~1.63



Website: www.greenconn.com
E-mail: sales@greenconn.com

REV. A UNIT. mm SCALE. 4:1

3RD.ANG
PROJ.



PAGE. 1/1

GENERAL TOLERANCE

X.' ± 3.0 '	X. ± 0.20
.X' ± 2.0 '	.X ± 0.15
.XX' ± 1.0 '	.XX ± 0.10
.XXX' ± 0.5 '	.XXX ± 0.05

DESIGNED:

DATE:

CHECKED:

DATE:

APPROVED:

DATE:

DWG. NO.

GTZ1E2-01

PART NO.

GTZ1E2-01S4BL

TITLE.

CONTACT PIN SIZE 16