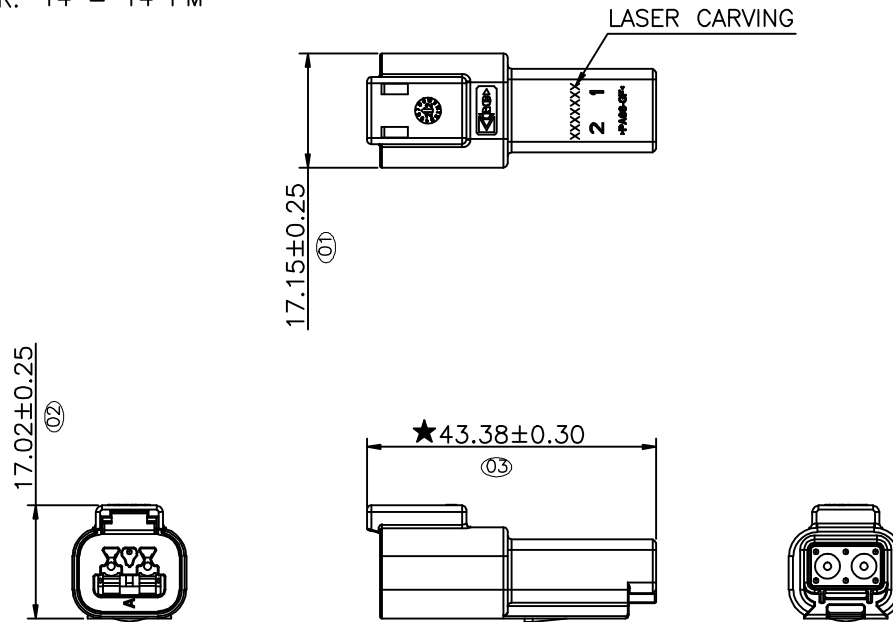


LASER CARVING DESCRIPTION : XX X XX XX

XX-YEAR: 20 = 2020  
 X-MONTH: A = JAN, B = FEB,.....  
 XX-DAY: 14 = 14th DAY  
 XX-HOUR: 14 = 14 PM



Specifications

Current Rating 14 AWG: 13.0Amp AC/DC  
 16 AWG: 13.0Amp AC/DC  
 18 AWG: 10.0Amp AC/DC  
 20 AWG: 7.5Amp AC/DC

Voltage Rating: 250V AC/DC.

Insulation Resistance: 1000MΩMin.

Dielectric Withstanding Voltage: 1500VAC

Contact Resistance: 20mΩMax.

Operating Temperature: -55°C to +125°C

Materials

Insulator Material: High Temperature Thermoplastic, UL 94V-0 PA66 or the equivalent material

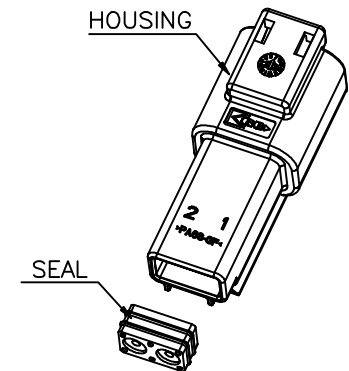
★ All materials must meet Greenconn hazardous substances control standards.

★: Significant Characteristics.

indicates product characteristics, functionalities, and manufacturing processes regarding to customer's specifications

★: Safety Features

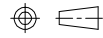
indicates product characteristics, functionalities, and manufacturing processes complying to legal regulations stated by local government



Website: www.greenconn.com  
 E-mail: sales@greenconn.com

REV. A UNIT. mm SCALE. 1:1

3RD. ANG PROJ.



PAGE. 1/1

GENERAL TOLERANCE

X' $\pm 3.0'$	X $\pm 0.30$
.X' $\pm 2.0'$	.X $\pm 0.25$
.XX' $\pm 1.0'$	.XX $\pm 0.20$
.XXX' $\pm 0.5'$	.XXX $\pm 0.15$

DESIGNED:

DATE:

CHECKED:

DATE:

APPROVED:

DATE:

DWG. NO.

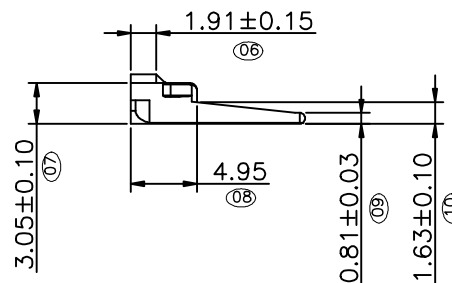
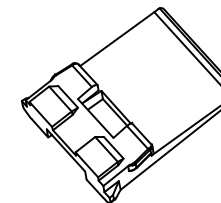
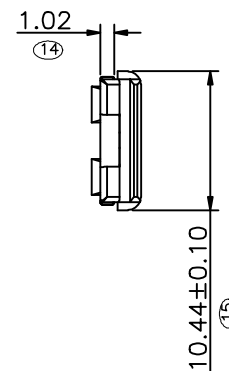
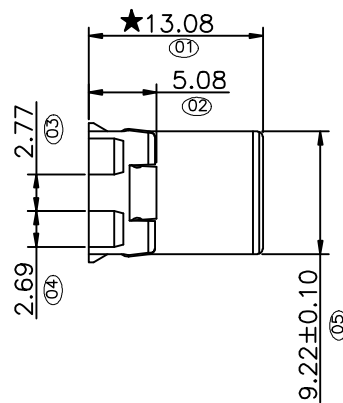
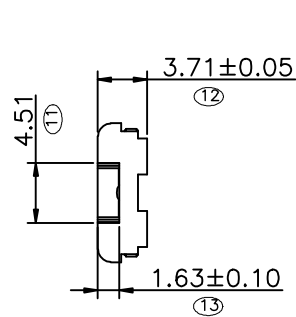
AGZ011-HA

PART NO.

AGZ011-02APA

TITLE.

2 WAY  
 RECEPTACLE, STANDARD  
 SEAL EXTRA THIN  
 SEAL SERIES



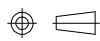
Specifications  
 Operating Temperature: -55°C to +125°C  
 Material:  
 Regular Thermoplastic: Only Suitable for Wave  
 Soldering Process (PBT).  
 Color of Material: Green  
 ★ All materials must meet Greenconn requirement  
 for environment protection.  
 ★★: Significant Characteristics.  
 indicates product characteristics, functionalities, and  
 manufacturing processes regarding to customer's  
 specifications  
 ★★: Safety Features  
 indicates product characteristics, functionalities, and  
 manufacturing processes complying to legal  
 regulations stated by local government



Website: www.greenconn.com  
 E-mail: sales@greenconn.com

REV. A UNIT. mm SCALE. 2:1

3RD. ANG  
 PROJ.



PAGE. 1/1

# GENERAL TOLERANCE

X'±3.0'	X±0.30
.X'±2.0'	.X±0.25
.XX'±1.0'	.XX±0.20
.XXX'±0.5'	.XXX±0.15

DESIGNED:

DATE:

CHECKED:

DATE:

APPROVED:

DATE:

DWG. NO.

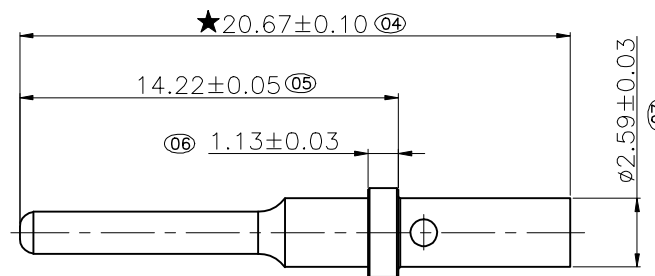
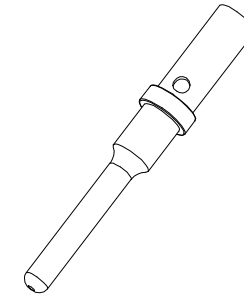
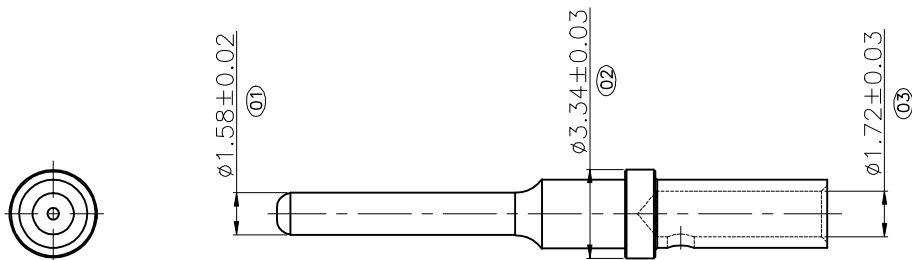
AGZ051-HA

PART NO.

AGZ051-02AAL

TITLE.

WEDGE LOCK FOR 2 PIN  
 RECEPT HOUSING GT SERIES



1. Material: Brass.
  2. Plating:  
Nickel underplated all over 100~200u"
  3. Tolerance for all radius is  $\pm 0.15\text{mm}$  unless otherwise specified.
  - ★ 4. All materials must meet GREENCONN hazardous substances control standards.
- "★": Significant Characteristics.  
indicates product characteristics, functionalities, and manufacturing processes regarding to customer's specifications
- "☆": Safety Features  
indicates product characteristics, functionalities, and manufacturing processes complying to legal regulations stated by local government

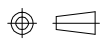
Greenconn's P/N	CABLE SPEC		Diameter of the cable including insulation(mm)
	mm <sup>2</sup>	AWG#	
GTZ1E2-01S4BL	2.5~0.5	14~20	0.81~1.63



Website: [www.greenconn.com](http://www.greenconn.com)  
E-mail: [sales@greenconn.com](mailto:sales@greenconn.com)

REV. A UNIT. mm SCALE. 4:1

3RD.ANG  
PROJ.



PAGE. 1/1

#### GENERAL TOLERANCE

X.' $\pm 3.0$ '	X. $\pm 0.20$
.X' $\pm 2.0$ '	.X $\pm 0.15$
.XX' $\pm 1.0$ '	.XX $\pm 0.10$
.XXX' $\pm 0.5$ '	.XXX $\pm 0.05$

DESIGNED:

DATE:

CHECKED:

DATE:

APPROVED:

DATE:

DWG. NO.

GTZ1E2-01

PART NO.

GTZ1E2-01S4BL

TITLE.

CONTACT PIN SIZE 16