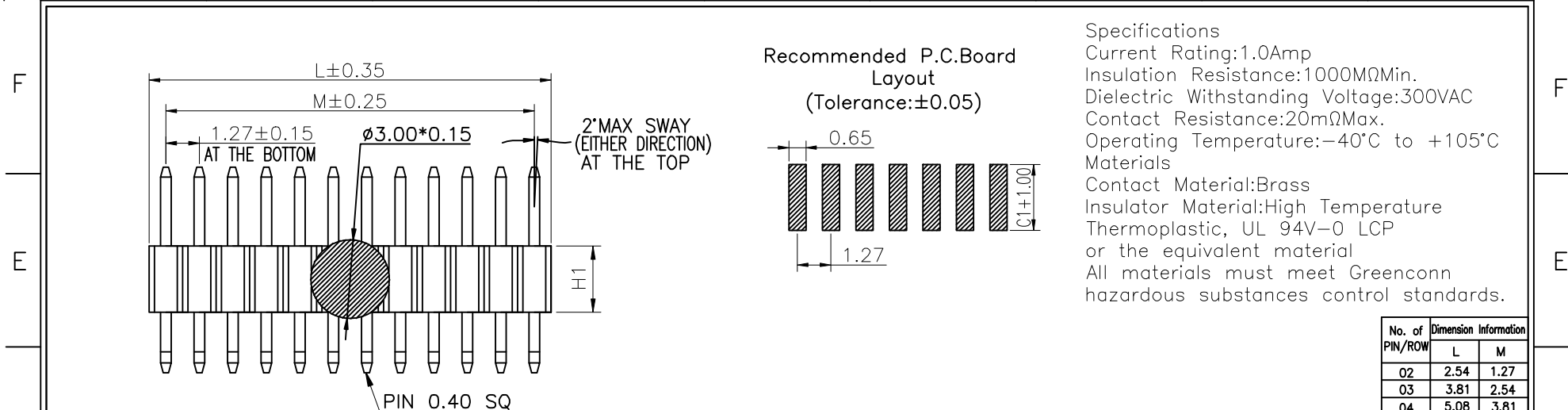
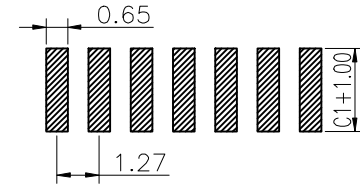


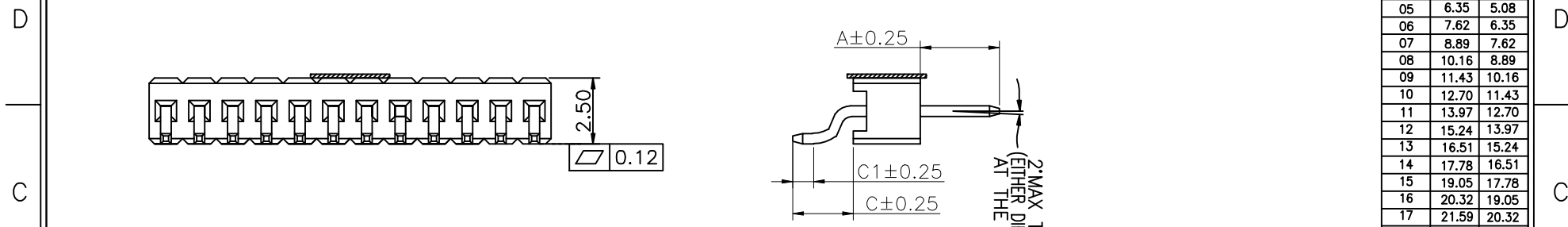
1 2 3 4 5 6 7 8 9



Recommended P.C.Board Layout
(Tolerance:±0.05)



Specifications
 Current Rating:1.0Amp
 Insulation Resistance:1000MΩMin.
 Dielectric Withstanding Voltage:300VAC
 Contact Resistance:20mΩMax.
 Operating Temperature:-40°C to +105°C
 Materials
 Contact Material:Brass
 Insulator Material:High Temperature Thermoplastic, UL 94V-0 LCP or the equivalent material
 All materials must meet Greenconn hazardous substances control standards.



No. of PIN/ROW	Dimension Information	
	L	M
02	2.54	1.27
03	3.81	2.54
04	5.08	3.81
05	6.35	5.08
06	7.62	6.35
07	8.89	7.62
08	10.16	8.89
09	11.43	10.16
10	12.70	11.43
11	13.97	12.70
12	15.24	13.97
13	16.51	15.24
14	17.78	16.51
15	19.05	17.78
16	20.32	19.05
17	21.59	20.32
18	22.86	21.59
19	24.13	22.86
20	25.40	24.13
21	26.67	25.40
22	27.94	26.67
23	29.21	27.94
24	30.48	29.21
25	31.75	30.48
26	33.02	31.75
27	34.29	33.02
28	35.56	34.29
29	36.83	35.56
30	38.10	36.83
31	39.37	38.10
32	40.64	39.37
33	41.91	40.64

Ordering Information

G PED1XX - XX XX A XXX C 1 X X

Rows Option
 1=Single row
 2=Dual row
 3=Tripe row
 4=Quadruple

Plastic Height
 01:H1=2.54
 02:H1=2.00
 03:H1=1.50

No. of Pins per Row
 02~33

Locating Peg
 A=No locating post
 B=Round post
 C=Square post

Plating Option
 01=Tin
 02=Gold Flash
 05=Gold Flash/Tin
 22=Matte Tin

Pin length
 See the drawing

Insulator Material
 R=Nylon(Halogen Free)
 C=LCP

Color
 1=Black
 2=White
 3=Yellow
 E=Beige

Contact Material
 A=Phosphor Bronze
 B=Brass

Packing Option
 A=Box
 C=Tube
 D=Tape&Reel
 G=Acetate Tape+Tube
 H=Acetate Tape+Tape&Reel

格稜股份有限公司 Greenconn Corporation				GENERAL TOLERANCE		DESIGNED:	DATE:	DWG. NO. GPED1XX-CAXX	TITLE. 1.27 PIN HEADER SINGLE ROW SMT TYPE CONNECTOR
				X.±5.0'	X.±0.30	CHECKED:	DATE:		
REV.	UNIT.	SCALE.	PAGE.	.XX'±2.0'	.XX±0.15	CO SIGNED:	DATE:	PART NO. GPED1XX-XXXX AXXX C1XX	
01	mm	5:1	1/1	.XXX'±1.0'	.XXX±0.10	APPROVED:	DATE:		

1 2 3 4 5 6 7 8 9