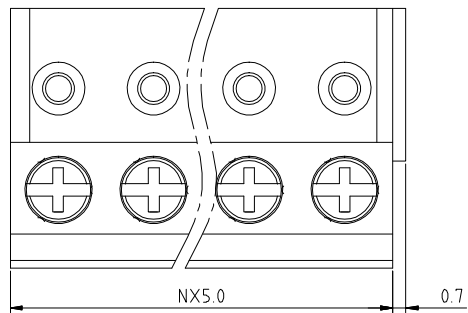


1 2 3 4 5 6 7 8 9

F

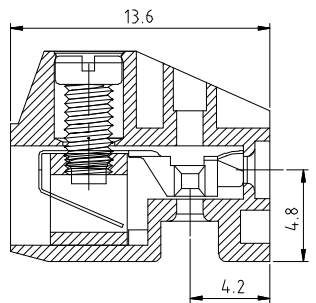
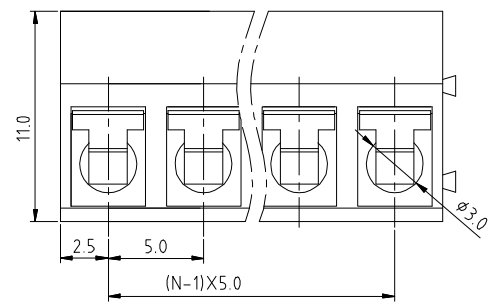


N=Number of contact

E

Technical Data:
 Material:
 Contact(metal housing): Copper Alloy with Ni plated
 Terminal screw: Steel galvanized with Cr3+ plated
 Wire guard: Copper Alloy with Tin plated.
 Insulator body(housing): Polyamide(UL94V-0)
 Electrical
 Voltage rating: 300VAC
 Current rating: 10 Amps/way max
 Contact resistance: 20mΩ(max)
 Withstanding Voltage: 2500VAC(1min) Test time=60sec/1pcs
 Wire range: 14-22AWG
 Mechanical:
 Torque: 4.0kgf.cm/M2.6
 Operating temperature: -40°C to +105°C
 Soldering reliability:
 Test temperature= 250°C±10°C
 5 seconds max

D



C

Ordering Information

C XLZ114 - XX XX A 001 E X B X

No. of Pins per Row 02~24 Standard Plating 01=Tin

Color 1=Black 7=Blue 6=Gray G=Green Standard Packing N=PE Bag Selective Packing R=Carton

B

A

<p>Website: www.greenconn.com E-mail: sales@greenconn.com</p>			3RD.ANG PROJ. 	GENERAL TOLERANCE X. 停 1.0' X.?.50 .XX停 / .XX?.25 .XXX停 / .XXX?	DESIGNED: CHECKED: APPROVED:	DATE: DATE: DATE:	DWG. NO. CXLZ114-CA001 PART NO. CXLZ114-XXXXA001EXBX	TITLE. Pitch 5.00mm series
REV. A	UNIT. mm	SCALE. 1:1	PAGE. 1/1					

1 2 3 4 5 6 7 8 9