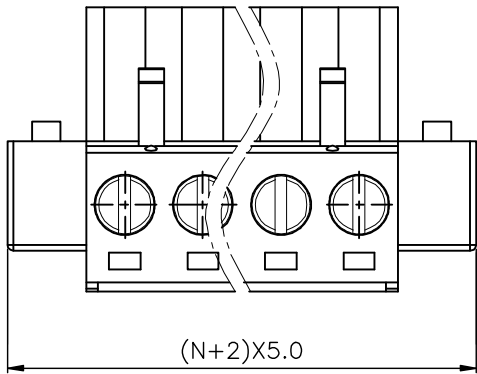


1 2 3 4 5 6 7 8 9

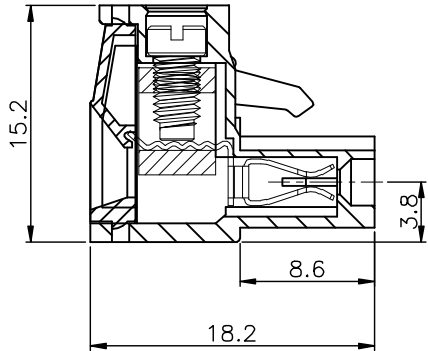
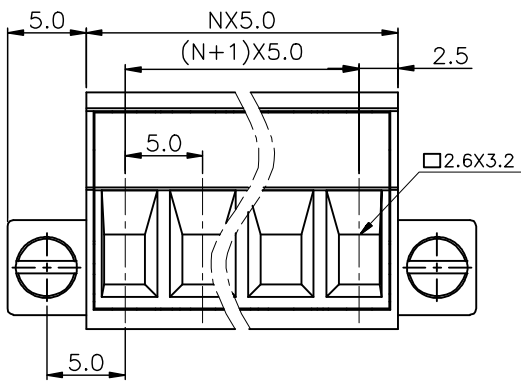
F



Electrical
 Voltage rating:300VAC
 Current rating: 16 Amps/way max
 Contact resistance: 20mΩ(max)
 Insulation resistance: 5000MΩ/1000V
 Withstanding Voltage: 2500VAC(1min) Test time:60sec/1pcs
 wire range: 12-26AWG
 Mechanical:
 Torque: 5.0kgf.cm/M3
 Operating temperature:-40°C to +105°C
 Materials
 Contact Material:Brass
 Insulator Material: UL 94V-0 PA66
 All materials must meet GREENCONN
 hazardous substances control standards.

E

D



N=Number of contacts

Ordering Information

C X LZ104 - XX XX A 006 E X B X

No. of Pins per Row 02~24 Standard Plating 01=Tin

Color
 1=Black
 6=Gray
 7=Blue
 G=Green

Standard Packing
 R=Carton
 Selective Packing
 N=PE Bag

A

Greenconn
 Website:www.greenconn.com
 E-mail:sales@greenconn.com

REV. A	UNIT. mm	SCALE. 1:1	3RD.ANG PROJ.	GENERAL TOLERANCE	DESIGNED:	DATE:	DWG. NO. CXLZ104-CA006EB	TITLE. Pitch 5.00mm Auricaled Series
				X.±0.50'				
				.X'±3.0'	CHECKED:	DATE:	PART NO. CXLZ104-XXXXA006EXBX	
				.XX'±2.0'	APPROVED:	DATE:		
			PAGE. 1/1	.XXX'±1.0'				
				.XXX±/				

M9

1 2 3 4 5 6 7 8 9

F

E

D

C

B

A