

1 2 3 4 5 6 7 8 9

F

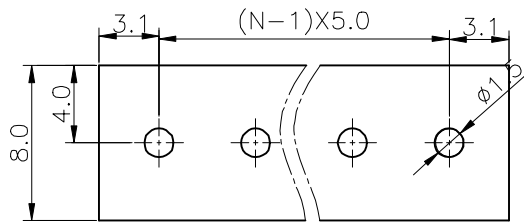
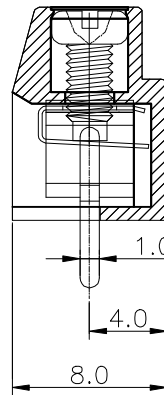
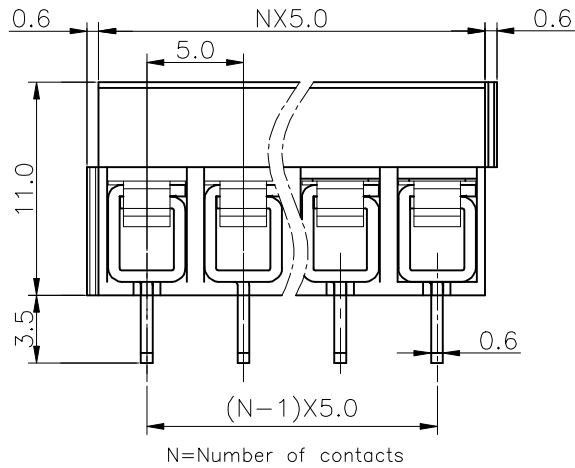
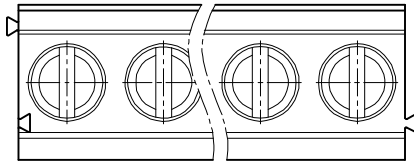
E

D

C

B

A



P C B LAYOUT(±0.05)

**Specifications**  
 Voltage rating:250VAC  
 Current rating:15 Amps/way max  
 Contact resistance: 20mΩ(max)  
 Insulation resistance: 5000MΩ/1000V  
 Withstanding Voltage: 2500VAC(1min)  
 Test time:60sec/1pcs  
 wire range: 14–24AWG  
**Mechanical:**  
 Torque:4.0kgf.cm/M2.5  
 Operating temperature:–40°C to+105°C  
**Materials**  
 Contact Material:Brass  
 Insulator Material: UL 94V–0 PA66  
 All materials must meet GREENCONN  
 hazardous substances control standards.

### Ordering Information

C XLA105 – XX XX A 001 E X Z X

No. of pins per Row 02~24      Standard Plating 01=Tin      Color 1=Black 6=Grey 7=Blue G=Green .....      Standard Packing R=Carton



Website:www.greenconn.com  
 E-mail:sales@greenconn.com

REV. A    UNIT. mm    SCALE. 1:1

3RD.ANG PROJ.  
    PAGE. 1/1

GENERAL TOLERANCE	
X.±5.0'	X.±0.50
.X'±3.0'	.X±0.30
.XX'±2.0'	.XX±0.20
.XXX'±1.0'	.XXX±/

DESIGNED:  
 CHECKED:  
 APPROVED:

DATE:  
 DATE:  
 DATE:

DWG. NO.  
 CXLA105-CA1EZ  
 PART NO.  
 CXLA105-XXXXA001EXZX

TITLE.  
 pitch 5.0mm – series

1 2 3 4 5 6 7 8 9