

1 2 3 4 5 6 7 8 9

F

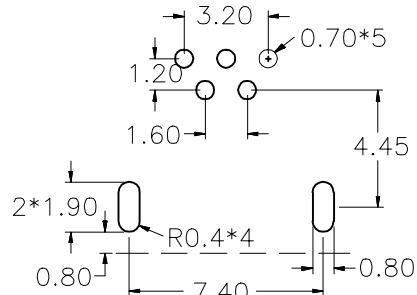
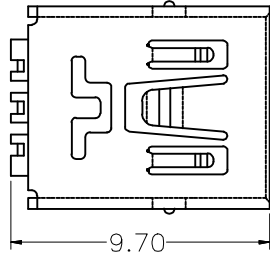
E

D

C

B

A



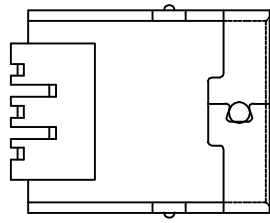
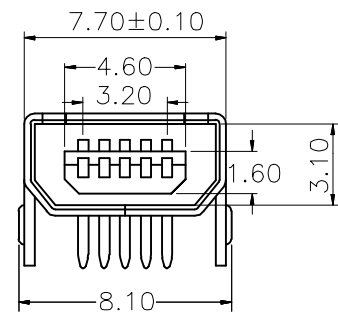
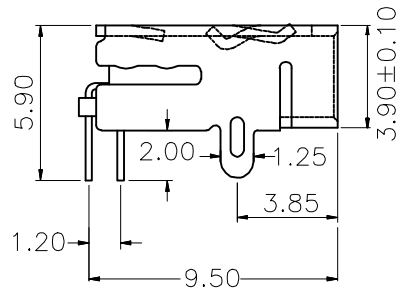
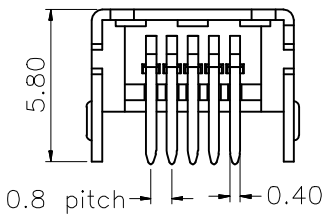
RECOMMENDED PCB LAYOUT

Specifications:
 Electrical:
 1.Current Rating:1.0A/contact terminal
 2.Voltage Rating: 30V DC
 3.Contact Resistance:50 milliohms MAX
 4.Dielectric Withstanding Voltage: 300V AC AT Sea Level
 5.Insulation Resistance: 100MEGA ohms MIN

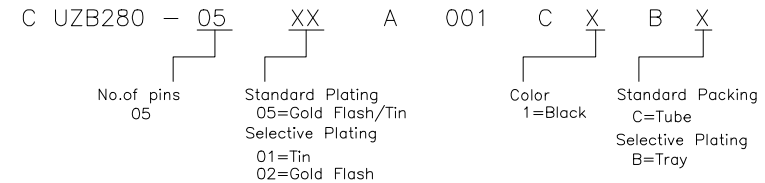
Raw material:
 1.Plastic cement:LCP Black
 2.Contact: C2680
 3.Shell: Copper Alloy

Electroplate:
 1.Contact: SEE PART NUMBER
 2.Shell: Nickel Plating

All materials must meet GREENCONN hazardous substances control standards.



Ordering Information



Greenconn
 Website: www.greenconn.com
 E-mail: sales@greenconn.com

REV. 01	UNIT. mm	SCALE. 1:1
---------	----------	------------

3RD.ANG PROJ.

 PAGE. 1/1

GENERAL TOLERANCE	
X.'±5.0'	X.±/
.X'±3.0'	.X±0.30
.XX'±2.0'	.XX±0.25
.XXX'±1.0'	.XXX±0.15

DESIGNED:	DATE:
CHECKED:	DATE:
APPROVED:	DATE:

DWG. NO. CUZB280-CA001
PART NO. CUZB280-05XXA001CXB

TITLE. MINI USB 5F AB型90度两脚插板

1 2 3 4 5 6 7 8 9

F

E

D

C

B

A