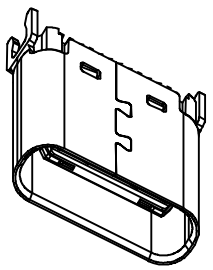
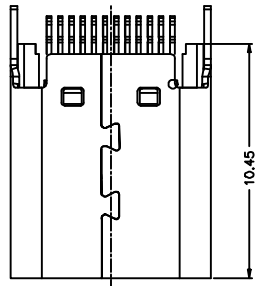


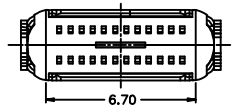
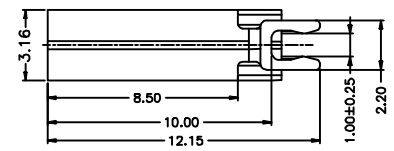
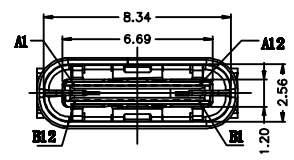
1 2 3 4 5 6 7 8 9

F
E
D
C
B
A



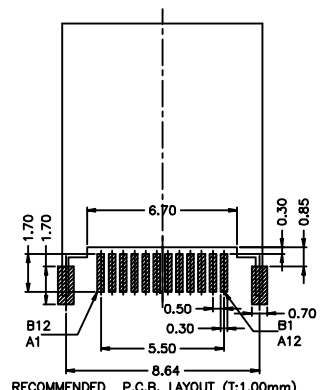
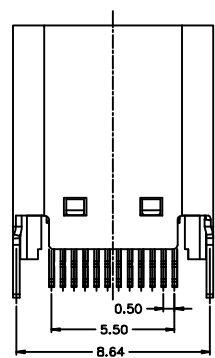
NOTES:
 SPECIFICATION:
 CURRENT RATING: 1.5A MAX
 VOLTAGE: 100 VAC
 TEMPERATURE RANGE: -30 °C ~ 85 °C
 CONTACT RESISTANCE: 40 MILLIONHM MAX
 INSULATION RESISTANCE: 100 MEGOHMS MIN.
 INSERTION FORCE : 5N~20N
 UNMATING FORCE: 8N~20N
 DURABILITY: 10,000 CYCLES

MATERIAL:
 HOUSING: LCP UL94V-0.
 CONTACTS: COPPER ALLOY
 SHELL: STAINLESS STEEL
 SPRING: STAINLESS STEEL
 SHIELDING PLATE: STAINLESS STEEL
 All materials must meet GREENCONN hazardous substances control standards.



USB TYPE-C PIN ASSIGNMENTS

A1	GND	B12	GND
A2	SSTXP1	B11	SSRXP1
A3	SSTXN1	B10	SSRXN1
A4	VBUS	B9	VBUS
A5	CC1	B8	SBU2
A6	DP1	B7	DN2
A7	DN1	B6	DP2
A8	SBU1	B5	CC2
A9	VBUS	B4	VBUS
A10	SSRXN2	B3	SSTXN2
A11	SSRXP2	B2	SSTXP2
A12	GND	B1	GND
PIN	SIGNAL NAME	PIN	SIGNAL NAME



RECOMMENDED P.C.B. LAYOUT (T:1.00mm)
 TOLERANCE UNSPECIFIED ±0.05mm

Ordering Information

C UAE101 - 24 XX A 001 C X 9 X
 No. of pins 24
 Standard Plating 02=Gold Flash Selective Plating 05=Gold Flash/Tin
 Color 1=Black
 Standard Packing B=Tray Standard Packing C=Tube

Greenconn
 Website: www.greenconn.com
 E-mail: sales@greenconn.com

3RD.ANG PROJ.
 UNIT. mm
 SCALE. 1:1
 PAGE. 1/1

GENERAL TOLERANCE	
X' ±5.0'	X ±0.38
.X' ±3.0'	.X ±0.30
.XX' ±2.0'	.XX ±0.25
.XXX' ±1.0'	.XXX ±0.15

DESIGNED: _____ DATE: _____
 CHECKED: _____ DATE: _____
 APPROVED: _____ DATE: _____

DWG. NO. CUAE101-CA001C9
 PART NO. CUAE101-24XXA001CX9X

TITLE. USB TYPE C 插座夹板式 夹板厚度1.0mm L=12.15mm

1 2 3 4 5 6 7 8 9