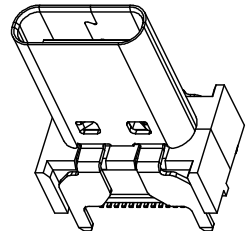
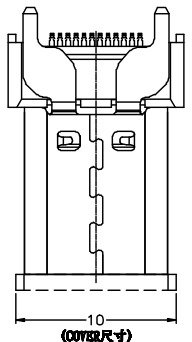
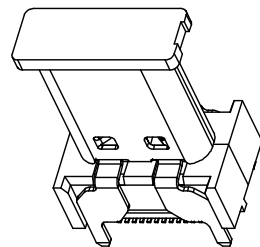


1 2 3 4 5 6 7 8 9

F



WITHOUT COVER

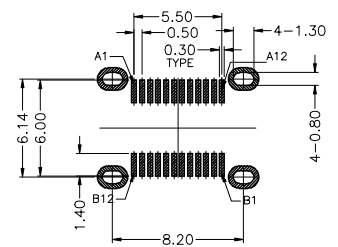
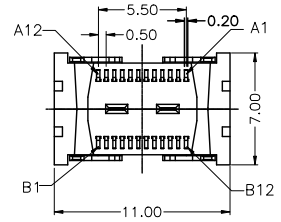
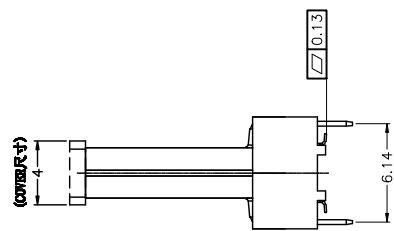
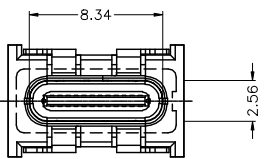


WITH COVER

Specifications:

- 1.Contact Resistance:40mOHM Max.;
- 2.Dielectric Withstanding Voltage:100V AC For 1 Minute;
- 3.Insulation Resistance:100M OHM Min.;
- 4.Mating And unmating Force:
Mating Force: 5~20N
Unmating Force: 8~20N;
6~20N AFTER TEST;
- 5.Durability:10000 Cycles;
- 6.Material:
HOUSING: LCP UL94V-0.
COVER: LCP UL94V-0.
CONTACTS: C7025
SHELL: SUS304
MID PLATE: SUS301
GND Plate: SUS301

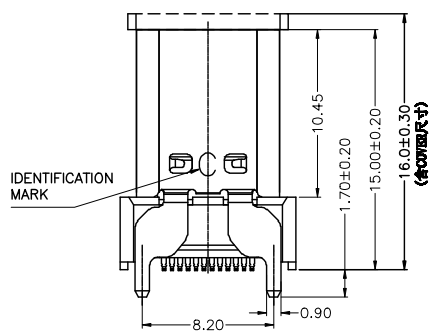
E



RECOMMEND P.C.B LAYOUT (COMPONENT SIDE)
TOLERANCE FOR PCB LAYOUT IS ± 0.05

D

C



Ordering Information

C UAC209 - 24 XX A 002 C X 9 X

No. of pins 24 Standard Plating 75=Gold Flash/Matte Tin Color 1=Black Standard Packing F=CAP+Tape&Reel
Selective Packing D=Tape&Reel

B

A

Greenconn
Website: www.greenconn.com
E-mail: sales@greenconn.com

REV. A	UNIT. mm	SCALE. 1:1
--------	----------	------------

3RD.ANG PROJ.
PAGE. 1/1

GENERAL TOLERANCE	
X' ±5.0'	X. ± /
.X' ±3.0'	.X ±0.30
.XX' ±2.0'	.XX ±0.25
.XXX' ±1.0'	.XXX ±0.15

DESIGNED:	DATE:
CHECKED:	DATE:
APPROVED:	DATE:

DWG. NO. CUAC209-CA002
PART NO. CUAC209-24XXA002CX9X

TITLE. Conn USB 3.1 C TYPE Female 24P SMT H=15.00MM

1 2 3 4 5 6 7 8 9

F

E

D

C

B

A