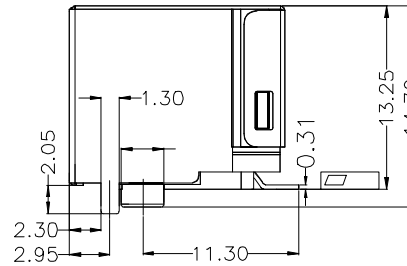
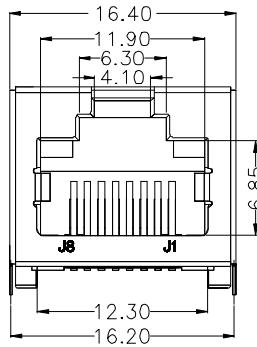


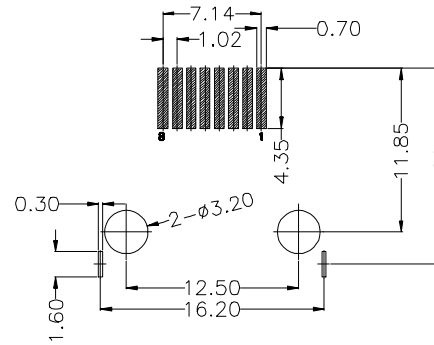
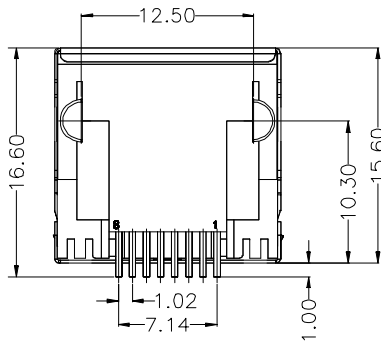
1 2 3 4 5 6 7 8 9

F  
E  
D  
C  
B  
A

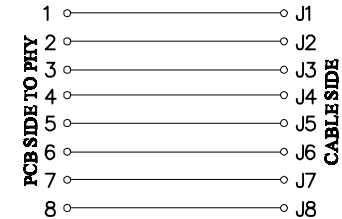


MATERIAL  
 HOUSING: LCP UL94V-0  
 TERMINAL: PHOSPHOR BRONZE T=0.30MM  
 SHIELD: C2680.T=0.20MM  
 MECHANICAL:  
 DURABILITY: 750 CYCLES MIN, 12.5MM/MINUTE  
 INSERTION FORCE: 2.2KGF MAX  
 RETENTION STRENGTH : 7.7KG.F BETWEEN JACK AND PLUG  
 OPERATING TEMPERATURE: -40°C~+85°C  
 STORAGE TEMPERATURE: -40°C~+85°C  
 ELECTRICAL:  
 VOLTAGE: 125 VOLTS AC  
 CURRENT RATING: 1.5AMP  
 DIELECTRIC STRENGTH: 1000 VAC RMS 50HZ OR 60HZ, 1MIN.  
 INSULATION RESISTANCE: 500 MEGA OHMS MIN. INITIAL  
 AFTER 500V DC FOR 1MINUTE  
 CONTACT RESISTANCE: SINGLE TERMINAL 30 MILLIOHMS MAX.  
 INITIAL 50 MILLIOHMS MAX. AFTER  
 DURABILITY TEST.

All materials must meet GREENCONN hazardous substances control standards.



RECOMMENDED PCB LAYOUT  
 VIEWED FROM COMPONENT SIDE



C TZD115 - 08 XX B 010 C X A X

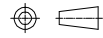
No. of pins: 08  
 Standard Plating: 05=Gold Flash/Tin, 75=Gold Flash/Matte Tin  
 Color: 1=Black  
 Standard Packing: D=Tape&Reel, B=Tray



Website: www.greenconn.com  
 E-mail: sales@greenconn.com

REV. A UNIT. mm SCALE. 1:1

3RD. ANG PROJ.



PAGE. 1/1

GENERAL TOLERANCE

X'±5.0'	X.±0.35
.X'±3.0'	.X±0.30
.XX'±2.0'	.XX±0.25
.XXX'±1.0'	.XXX±0.15

DESIGNED:

CHECKED:

APPROVED:

DATE:

DATE:

DATE:

DWG. NO.

CTZD115-CB010CA

PART NO.

CTZD115-08XXB010CXAX

TITLE.

RJ45 SMT 帶屏蔽

1 2 3 4 5 6 7 8 9