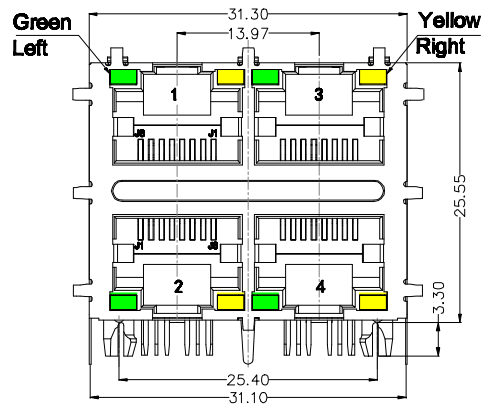
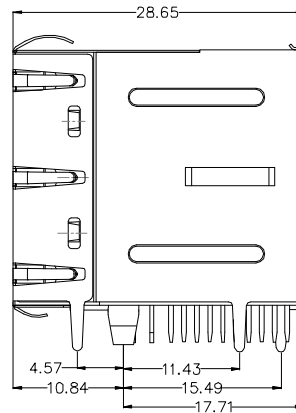


1 2 3 4 5 6 7 8 9

F



FRONT VIEW



RIGHT SIDE VIEW

**MATERIAL:**

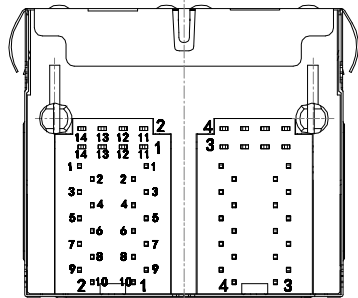
**HOUSING:** PBT,UL94V-0,BLACK.  
**TERMINALS BRACKET:** PBT,UL94V-0,BLACK.  
**SHIELD:** C2680,T=0.20MM  
**TERMINAL:** PHOSPHOR BRONZE,T=0.35MM,

**MECHANICAL:**

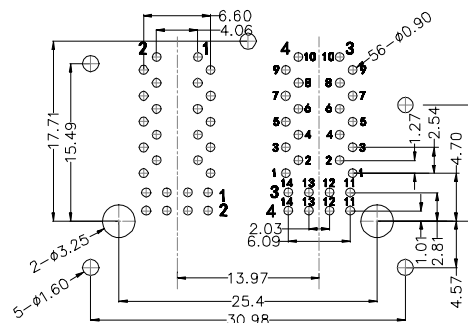
**DURABILITY:** 750 CYCLES MIN.  
**MATING FORCE:** 23N MAX.  
**OPERATING TEMPERATURE:** -40°C~+85°C.  
**STORAGE TEMPERATURE:** -40°C~+85°C.

D

C



BOTTOM VIEW



RECOMMENDED PCB LAYOUT

Ordering Information

C TZB611 - 56 XX B 003 A X A X  
 No. of pins 56 Standard Plating 53=Gold 6u"/Tin Color 1=Black Standard Packing B=Tray

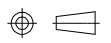
A



Website: www.greenconn.com  
 E-mail: sales@greenconn.com

REV. A UNIT. mm SCALE. 1:1 PAGE. 1/3

3RD.ANG PROJ.



GENERAL TOLERANCE

X.停 5.0' X.?.35  
 .X停 3.0' .X?.30  
 .XX停 2.0' .XX?.25  
 .XXX停 1.0' .XXX?. 15

DESIGNED:  
 CHECKED:  
 APPROVED:

DATE:  
 DATE:  
 DATE:

DWG. NO. CTZB611-CB003  
 PART NO. CTZB611-56XXB003AXAX

TITLE. RJ45 90° DIP 2X2 1000BASE

1 2 3 4 5 6 7 8 9

1 2 3 4 5 6 7 8 9

F

E

D

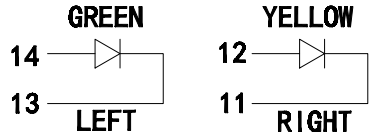
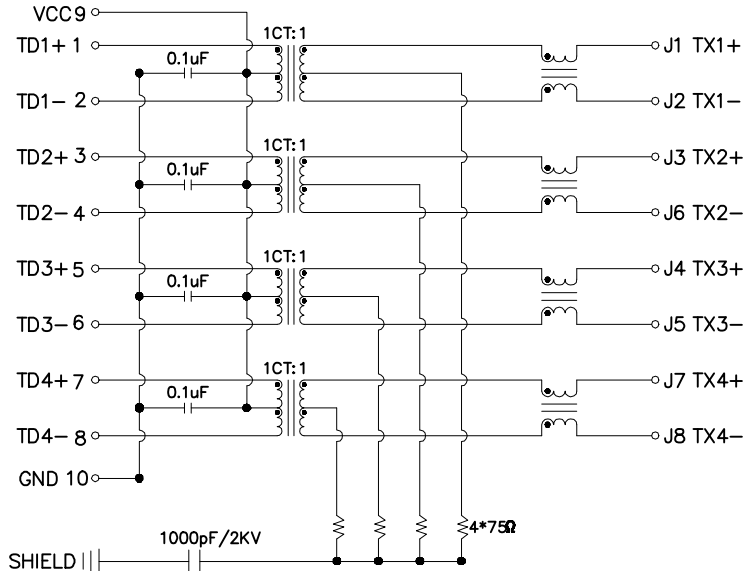
C

B

A

PCB SIDE TO PHY

CABLE SIDE



**Electrical:**

- 1. Turn ratio: 1~2: J1~J2=1CT:1CT(±2%).  
3~4: J3~J6=1CT:1CT(±2%).  
5~6: J4~J5=1CT:1CT(±2%).  
7~8: J7~J8=1CT:1CT(±2%).
- 2. OCL: 350uH Min. at 100KHz 100mV 8mA DC.
- 3. Insertion Loss: -1.0 dB Max 1~100MHz.
- 4. Return loss: -18dB Min 1~30MHz;  
-14dB Min 30~60MHz;  
-12dB Min 60~80MHz;  
-10dB Min 80~100MHz.
- 5. Cross talk: -40dB Min 1~30MHz;  
-35dB Min 30~60MHz;  
-30dB Min 60~100MHz;
- 6. CMR: -30dB Min 1~100MHz;
- 7. Hi-Pot: 2250V DC 6S 1mA PRI TO SEC

**LED Specification**

Standard LED Color	LED Wavelength	Foward(A)	Foward(V)
Green	568nm	20mA	1.85-2.45V
Yellow	585nm	20mA	1.7-2.2V

**Greenconn**  
 Website: www.greenconn.com  
 E-mail: sales@greenconn.com

3RD.ANG PROJ.  
 3RD ANGLE  
 PAGE. 2/3

GENERAL TOLERANCE	
X. 5.0'	X.?.35
.X 3.0'	.X?.30
.XX 2.0'	.XX?.25
.XXX 1.0'	.XXX?.15

DESIGNED:  
 CHECKED:  
 APPROVED:

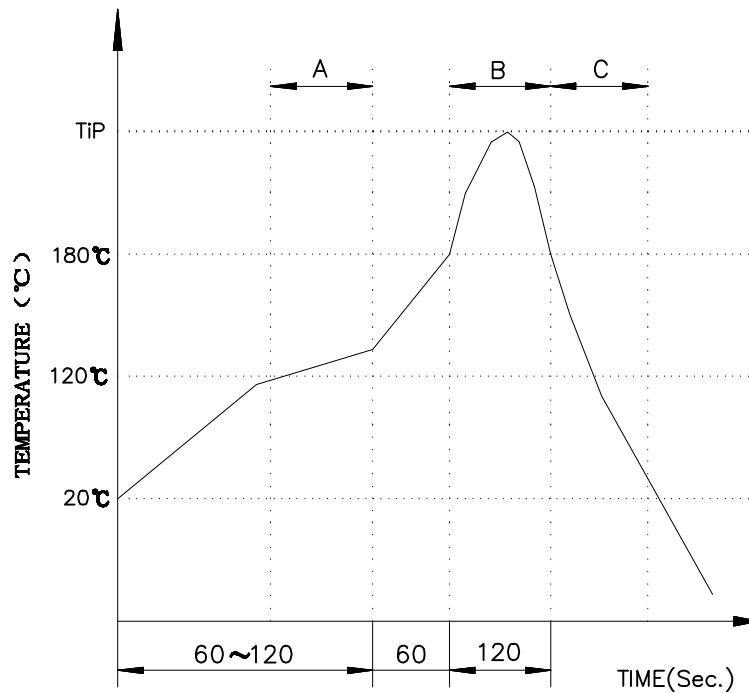
DATE:  
 DATE:  
 DATE:

DWG. NO.  
 CTZB611-CB003  
 PART NO.  
 CTZB611-56XXB003AXAX

TITLE.  
 RJ45 90° DIP 2X2 1000BASE

1 2 3 4 5 6 7 8 9

# PROFILE OF WAVE SOLDER



**A.Preheating B.Soldering C.Gradual Cooling**  
**Tip temperature:260±5°C.**  
**Tip temperature time:5Sec Max.**  
**Tip melting point of Sn96.5/Ag3/Cu0.5:217°C.**

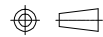
**Remarks: after wave soldering, the plastic positioning columns of the product which under the PCB will be slightly melted, but it won't affect its function.**



Website:www.greenconn.com  
 E-mail:sales@greenconn.com

REV. A UNIT. mm SCALE. 1:1

3RD.ANG  
 PROJ.



PAGE. 3/3

GENERAL TOLERANCE

X. 5.0'	X.?.35
.X 3.0'	.X?.30
.XX 2.0'	.XX?.25
.XXX 1.0'	.XXX?. 15

DESIGNED:

CHECKED:

APPROVED:

DATE:

DATE:

DATE:

DWG. NO.

CTZB611-CB003

PART NO.

CTZB611-56XXB003AXAX

TITLE.

RJ45 90' DIP 2X2 1000BASE