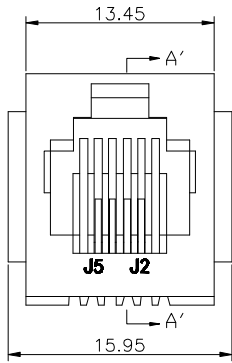
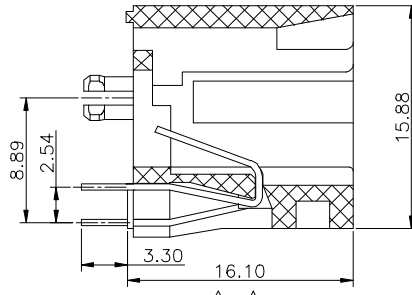


1 2 3 4 5 6 7 8 9

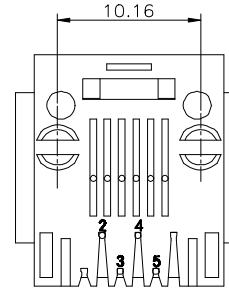
F
E
D
C
B
A



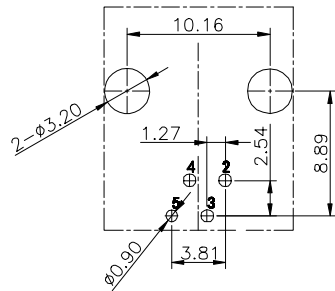
FRONT VIEW



CUTAWAY VIEW

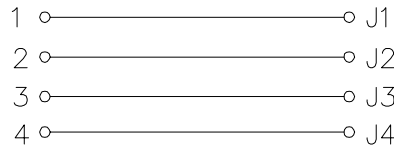


BACK VIEW



RECOMMENDED PCB LAYOUT
VIEWED FROM COMPONENT SIDE

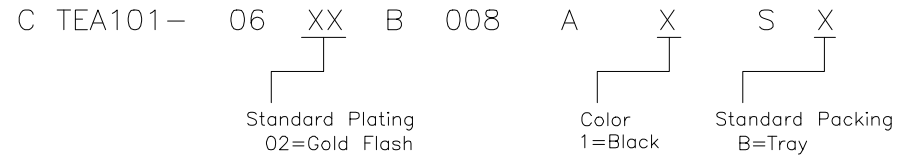
PCB SIDE TO PHY



CABLE SIDE

Material:
 Plastic:PBT,UL94V-0,Black.
 Terminal:Phosphor Bronze
 Mechanical:
 Durability: 750 cycles Min,12.5mm/minute
 Insertion force:2.2Kg.F Max.
 Retention strength:
 7.7Kg.F between jack and plug
 Operating temperature:-40~+85°
 Electrical:
 Voltage:125 Volts AC.
 Current rating:1.5AMP
 Dielectric strength:
 1000 VAC RMS 50Hz or 60Hz,1MIN.
 Insulation Resistance:
 500 Mega ohms minimum initial after
 500V DC for 1 minute.
 Low Level Contact Resistance:
 Single Terminal 30 milliohms maximum
 initial 50 milliohms maximum after
 durability test.
 All materials must meet GREENCONN hazardous
 substances control standards.

Ordering Information



格稜股份有限公司
Greenconn Corporation

REV. A	UNIT. mm	SCALE. 1:1	PAGE. 1/1	
-----------	-------------	---------------	--------------	--

GENERAL TOLERANCE	
X:±/	X.±/
.X'±/	.X±0.30
.XX'±/	.XX±0.20
.XXX'±/	.XXX±0.10

DESIGN:	DATE:
CHECKED:	DATE:
APPROVED:	DATE:

DWG. NO. CTEA101-CB8AS
PART NO. CTEA101-06XXB008AXSX

TITLE. RJ11 1*1 6P4C

1 2 3 4 5 6 7 8 9