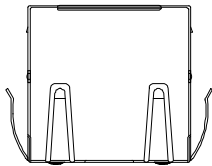
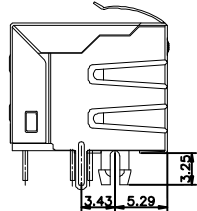


1 2 3 4 5 6 7 8 9

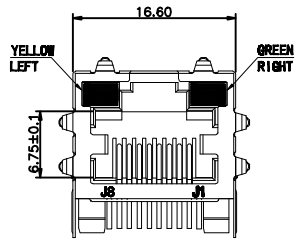
F



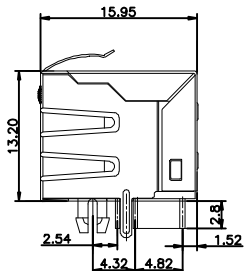
TOP VIEW



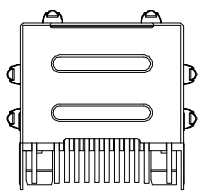
LEFT SIDE VIEW



FRONT VIEW



RIGHT SIDE VIEW



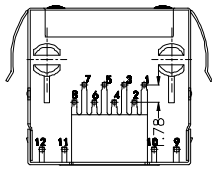
BACK VIEW

**MATERIAL:**  
 HOUSING: PA9T,UL94V-0,BLACK.  
 TERMINAL: PHOSPHOR BRONZE  
 SHIELD: C2680  
**MACHANICAL:**  
 DURABILITY: 750 CYCLES MIN,12.5MM/MINUTE.  
 INSERTION FORCE: 2.2KG.F MAX.  
 RETENTION STRENGTH : 7.7KG.F BETWEEN JACK AND PLUG.  
 OPERATING TEMPERATURE: -40°C~+85°C.  
 STORAGE TEMPERATURE: -40°C~+85°C.  
**ELECTRICAL:**  
 VOLTAGE: 125 VOLTS AC.  
 CURRENT RATING : 1.5AMP.  
 DIELECTRIC STRENGTH: 1000 VAC RMS 50HZ OR 60HZ,1MIN.  
 INSULATION RESISTANCE: 500 MEGA OHMS MIN. INITIAL  
 AFTER 500V DC FOR 1 MINUTE.  
 CONTACT RESISTANCE: SINGLE TERMINAL 30 MILLIOHMS MAX.  
 INITIAL 50 MILLIOHMS MAX. AFTER  
 DURABILITY TEST.  
 ALL MATERIALS MUST MEET GREENCONN  
 HAZARDOUS SUBSTANCES CONTROL STANDARDS.

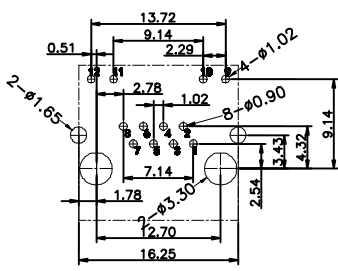
E

D

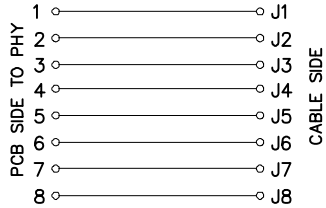
C



BOTTOM VIEW

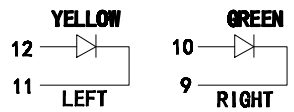


RECOMMENDED PCB LAYOUT  
 VIEWED FROM COMPONENT SIDE



LED Specification

Standard LED Color	LED Wavelength	Foward(A)	Foward(V)
Green	568nm	20mA	1.85-2.45V
Yellow	585nm	20mA	1.7-2.2V



B

Ordering Information

CT6B101 - XX XX B 003 D X A X  
 No. of Pins per Row 08      Standard Plating 02=Gold Flash      Color 1=Black      Standard Packing B=Tray

A

<p>Website:www.greenconn.com                  E-mail:sales@greenconn.com</p>	3RD.ANG PROJ.	GENERAL TOLERANCE		DESIGNED:	DATE:	DWG. NO. CT6B101-B003DA	TITLE. RJ45 带屏蔽带灯			
		X.'±5.0'	X.±0.35					CHECKED:	DATE:	PART NO. CT6B101-XXXXB003DXAX
	PAGE. 1/1	.X'±3.0'	.X±0.30					APPROVED:	DATE:	
REV. 01	UNIT. mm	SCALE. 1:1	.XX'±2.0'	.XX±0.25						
			.XXX'±1.0'	.XXX±0.10						

1 2 3 4 5 6 7 8 9