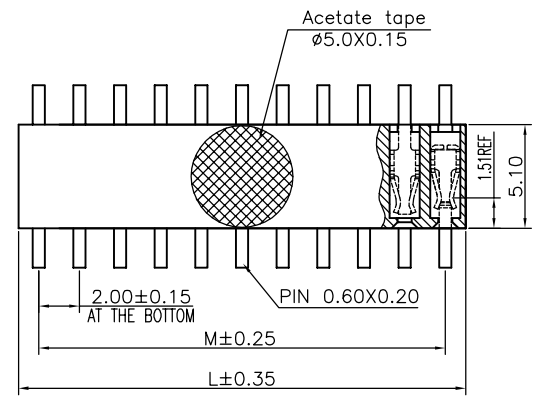


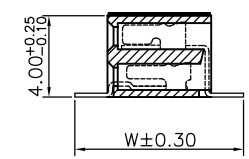
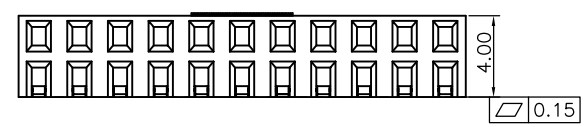
1 2 3 4 5 6 7 8 9

F
E
D
C
B
A

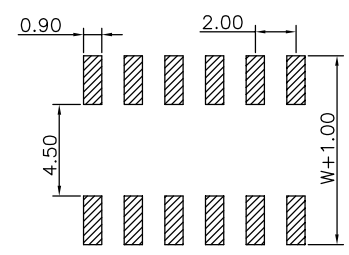
F
E
D
C
B
A



Specifications
 Current Rating:2.0Amp
 Insulation Resistance:1000MΩMin.
 Dielectric Withstanding Voltage:500VAC
 Contact Resistance:20mΩMax.
 Operating Temperature:-40°C to +105°C
 Materials
 Contact Material:Phosphor Bronze
 Insulator Material:
 Nylon(High temperature resistance),
 LCP(High temperature resistance),
 UL 94V-0
 All materials must meet Greenconn
 hazardous substances control standards.

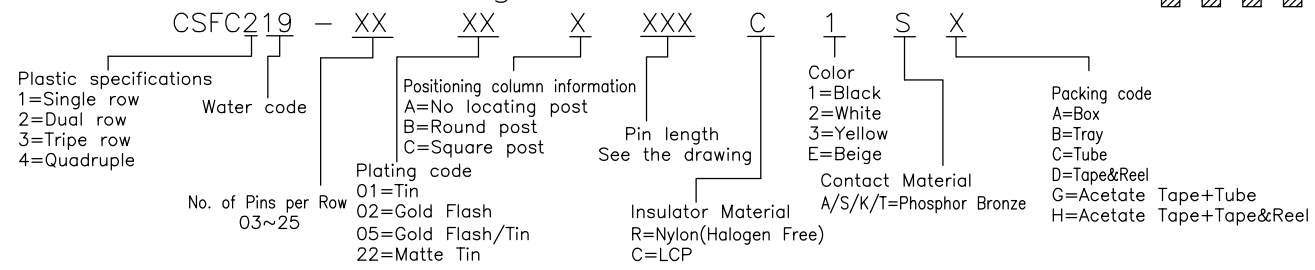


Recommended P.C.Board
 Layout
 (Tolerance:±0.05)



No. of PIN/ROW	Dimension Information	
	M	L
03	4.00	6.00
04	6.00	8.00
05	8.00	10.00
06	10.00	12.00
07	12.00	14.00
08	14.00	16.00
09	16.00	18.00
10	18.00	20.00
11	20.00	22.00
12	22.00	24.00
13	24.00	26.00
14	26.00	28.00
15	28.00	30.00
16	30.00	32.00
17	32.00	34.00
18	34.00	36.00
19	36.00	38.00
20	38.00	40.00
21	40.00	42.00
22	42.00	44.00
23	44.00	46.00
24	46.00	48.00
25	48.00	50.00

Ordering Information



格稜股份有限公司
Greenconn Corporation

REV. 01		UNIT. mm	SCALE. 4:1	PAGE. 1/1	GENERAL TOLERANCE		DESIGNED:	DATE:	DWG. NO. CSFC219-CXX		TITLE. 2.00 HEADER FEMALE DUAL ROWS SMT TYPE SIDE ENTRY
					X.*±5.0°	X.±0.30	CHECKED:	DATE:	PART NO. CSFC219-XXXX XXXX X1SX		
					.X*±3.0°	.X±0.25	CO SIGNED:	DATE:			
					.XX*±2.0°	.XX±0.15	APPROVED:	DATE:			
					.XXX*±1.0°	.XXX±0.10					

1 2 3 4 5 6 7 8 9