

1 2 3 4 5 6 7 8 9

F

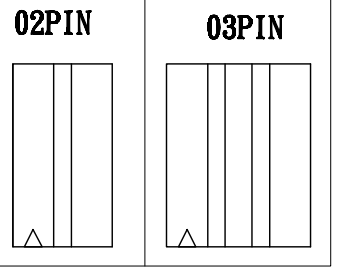
E

D

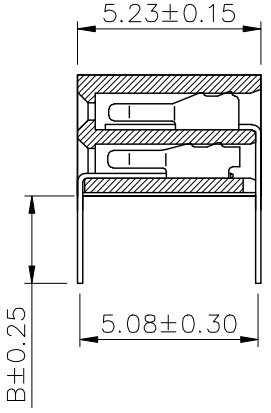
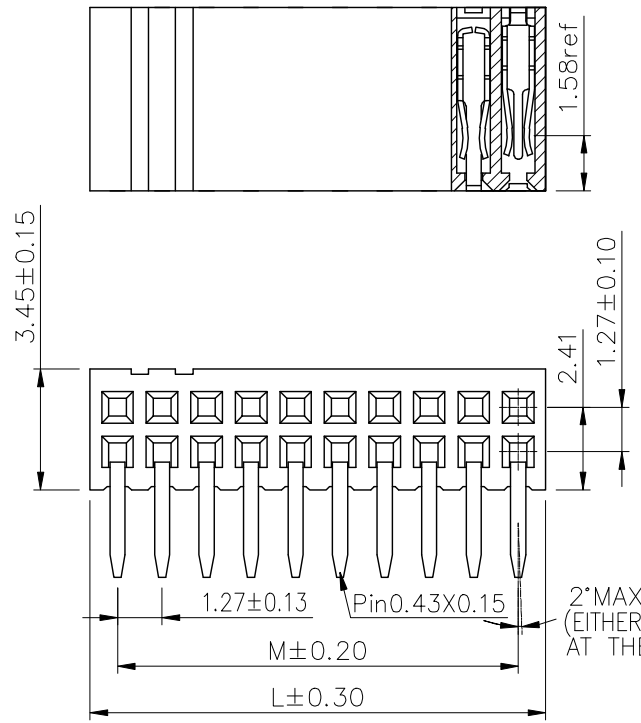
C

B

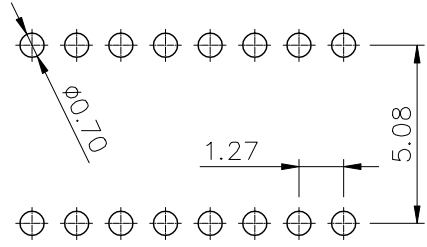
A



Specifications  
 Current Rating:1Amp  
 Insulation Resistance:1000MΩMin.  
 Dielectric Withstanding Voltage:300VAC  
 Contact Resistance:20mΩMax.  
 Operating Temperature:-40°C to +105°C  
 Materials  
 Contact Material:Phosphor Bronze  
 Insulator Material:High Temperature Thermoplastic, UL 94V-0 LCP or the equivalent material  
 All materials must meet Greenconn requirement for environment protection.



Recommended P.C.Board Layout  
 (Tolerance:±0.05)



No. of PIN/ROW	Dimension Information	
	M	L
02	1.27	2.84
03	2.54	4.11
04	3.81	5.38
05	5.08	6.65
06	6.35	7.92
07	7.62	9.19
08	8.89	10.46
09	10.16	11.73
10	11.43	13.00
11	12.70	14.27
12	13.97	15.54
13	15.24	16.81
14	16.51	18.08
15	17.78	19.35
16	19.05	20.62
17	20.32	21.89
18	21.59	23.16
19	22.86	24.43
20	24.13	25.70
21	25.40	26.97
22	26.67	28.24
23	27.94	29.51
24	29.21	30.78
25	30.48	32.05
26	31.75	33.32
27	33.02	34.59
28	34.29	35.86
29	35.56	37.13
30	36.83	38.40
31	38.10	39.67
32	39.37	40.94
33	40.64	42.21
34	41.91	43.48
35	43.18	44.75
36	44.45	46.02
37	45.72	47.29
38	46.99	48.56
39	48.26	49.83
40	49.53	51.10

Ordering Information

C SEB214 - XX XX A XXX C  
 Plastic specifications: 1=Single row, 2=Dual row, 3=Tripe row, 4=Quadruple  
 Water code: No. of Pins per Row 02~40  
 Positioning column information: A=No locating post, B=Round post, C=Square post  
 Plating code: 01=Tin, 02=Gold Flash, 05=Gold Flash/Tin, 22=Matte Tin  
 Pin length: See the drawing  
 Insulator Material: C=LCP  
 Color: 1=Black, 2=White, 3=Yellow, E=Beige  
 Contact Material: A/S/K/T=Phosphor Bronze  
 Packing code: C=Tube, D=Tape&Reel, G=Acetate Tape+Tube, H=Acetate Tape+Tape&Reel

<b>格稜股份有限公司</b> <b>Greenconn Corporation</b>			GENERAL TOLERANCE		DESIGN:	DATE:	DWG. NO.	TITLE.
			X'±5.0'	X.±0.30				
REV. 01	UNIT. mm	SCALE. 5:1	PAGE. 1/1	.XX'±2.0'	.XX±0.15	AUDITED:	DATE:	PART NO.
				.XXX'±1.0'	.XXX±0.10	APPROVED:	DATE:	CSEB214-XXXX AXXX C1AX

1 2 3 4 5 6 7 8 9

F

E

D

C

B

A