

F

E

D

C

B

A

F

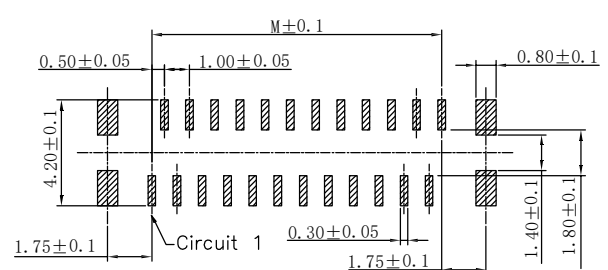
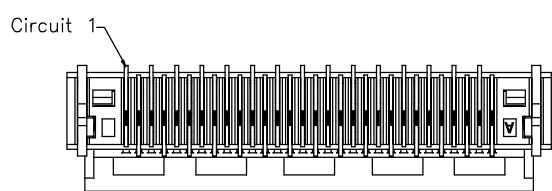
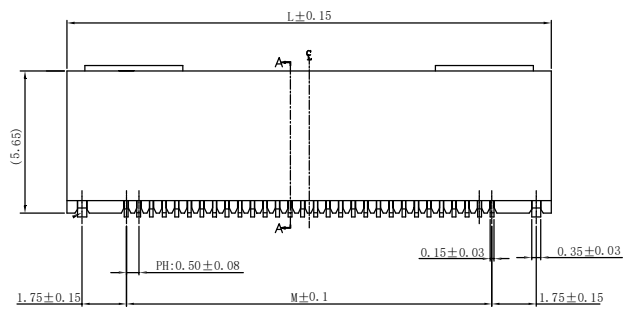
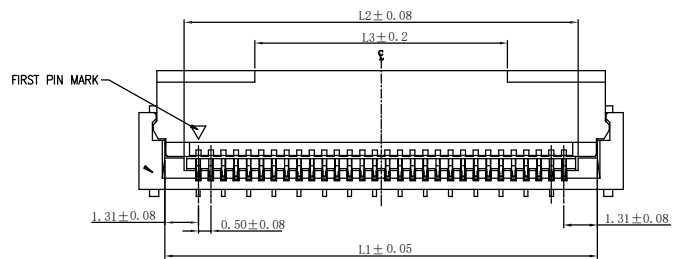
E

D

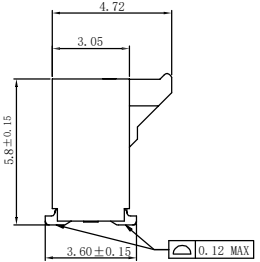
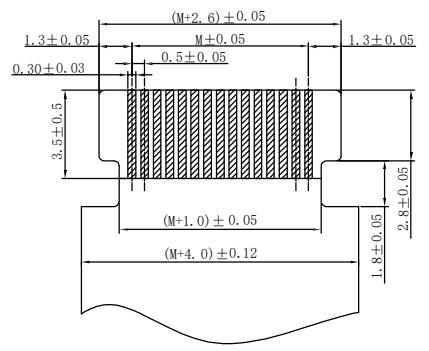
C

B

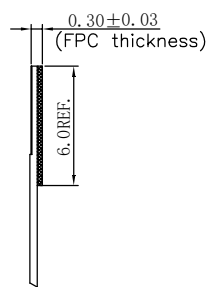
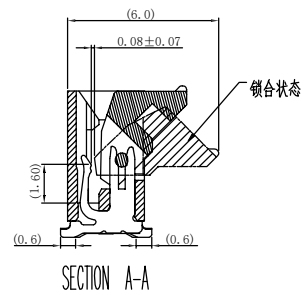
A



适用线路板
RECOMMENDED PCB LAYOUT



适用FPC寸法
APPLICABLE FPC

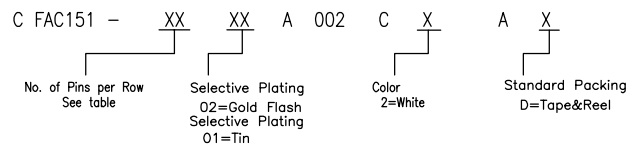


NOTES:
 RATING
 OPERATING TEMPERATURE: -40~105°C
 OPERATING VOLTAGE: 50V AC/DC
 CURRENT RATING: 0.5 AMPS
 DIELECTRIC WITHSTANDING VOLTAGE:
 500V AC/Minute;
 INSULATION RESISTANCE: 500MΩ Min;
 CONTACT RESISTANCE: 0.03Ω Max;
 MATERIAL;
 CONTACT MATERIAL: PHOSPHOR BRONZE
 FITTING NAIL: PHOSPHOR BRONZE
 HOUSING MATERIAL: LCP UL94V-0
 ACTUATOR MATERIAL: LCP UL94V-0

TABLE:

No. of Contacts	Dimension Information				
	M	L	L1	L2	L3
10	4.50	9.20	7.12	5.60	5.2
14	6.50	11.20	9.12	7.60	5.2
20	9.50	14.20	12.12	10.60	8.0
24	11.50	16.20	14.12	12.60	10.0
30	14.50	19.20	17.12	15.60	10.0
36	17.50	22.20	20.12	18.60	10.0
40	19.50	24.20	22.12	20.60	10.0
45	22.00	26.70	24.62	23.10	10.0
50	24.50	29.20	27.12	25.60	10.0
60	29.50	34.20	32.12	30.60	10.0
70	34.50	39.20	37.12	35.60	10.0

Ordering Information



3RD. ANG PROJ.

 PAGE. 1/1

GENERAL TOLERANCE	
X'±5.0'	X.±/
.X'±3.0'	.X±0.30
.XX'±2.0'	.XX±0.20
.XXX'±1.0'	.XXX±0.10

DESIGNED: _____ DATE: _____
 CHECKED: _____ DATE: _____
 APPROVED: _____ DATE: _____

DWG. NO. CFAC151-CA002
 PART NO. CFAC151-XXXX A002CXAX

TITLE. 0.5mm FPC CONN. SMT FRONTFLIP
 H=5.8 VERTICAL CONTACT