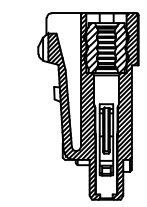
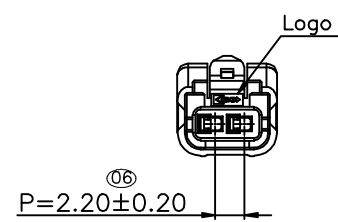
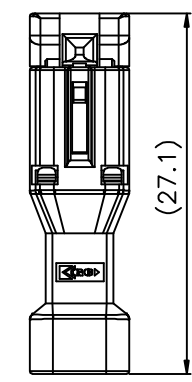
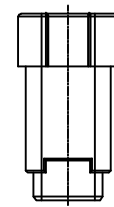
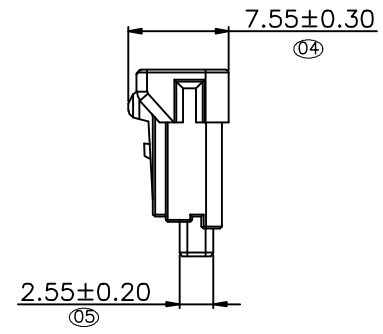
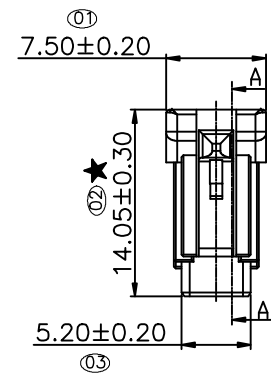
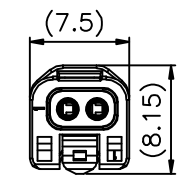

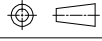


Mated Figure



Section A-A

Specifications
 Current Rating 20 AWG: 5.0Amp/PIN
 22 AWG: 4.0Amp/PIN
 24 AWG: 3.5Amp/PIN
 26 AWG: 3.0Amp/PIN
 Voltage Rating: 250V AC/DC.
 Insulation Resistance:1000MΩMin.
 Dielectric Withstanding Voltage:650VAC
 Contact Resistance:30mΩMax.
 Operating Temperature:-40°C to +105°C
Materials
 Insulator Material:Temperature
 Thermoplastic, UL 94V-0 PBT
 or the equivalent material
 ★ All materials must meet Greenconn
 hazardous substances control standards.
 ■★: Critical Characteristics.
 indicates product characteristics,
 functionalities, and manufacturing processes
 regarding to customer's specifications
 ■★: Safety Features
 indicates product characteristics,
 functionalities, and manufacturing processes
 complying to legal regulations stated by
 local government

 Website:www.greenconn.com E-mail:sales@greenconn.com			3RD.ANG PROJ.  PAGE. 1/1	GENERAL TOLERANCE X.'±3.0' X.±0.30 .X'±2.0' .X±0.25 .XX'±1.0' .XX±0.20 .XXX'±0.5' .XXX±0.15		DESIGNED: CHECKED: APPROVED:	DATE: DATE: DATE:	DWG. NO. AGZ171-HA-N PART NO. AGZ171-02AAT-N	TITLE. 2.2Pitch 2Pin SEAL Series Female Ass'y