

INKJET CODE Description : XX X XX XX

XX-YEAR: 20 = 2020
 X-MONTH: A = JAN, B = FEB,.....
 XX-DAY: 14 = 14th DAY
 XX-HOUR: 14 = 14 PM

Specifications

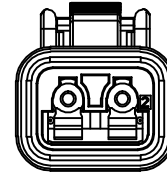
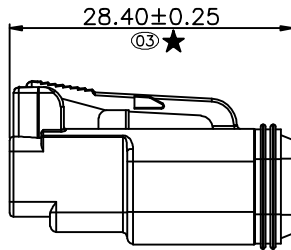
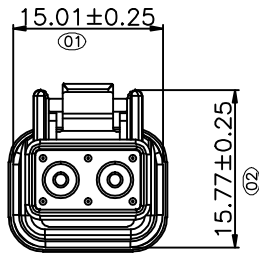
Current Rating 14 AWG: 13.0Amp AC/DC
 16 AWG: 13.0Amp AC/DC
 18 AWG: 10.0Amp AC/DC
 20 AWG: 7.5Amp AC/DC

Voltage Rating: 250V AC/DC.
 Insulation Resistance:1000MΩMin.
 Dielectric Withstanding Voltage:1500VAC
 Contact Resistance:20mΩMax.

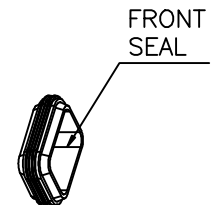
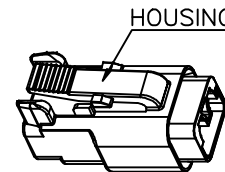
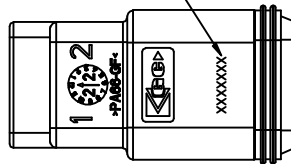
Operating Temperature:-55°C to +125°C
 Materials

Insulator Material:High Temperature Thermoplastic, UL 94V-0 PA66 or the equivalent material

★ All materials must meet Greenconn hazardous substances control standards.
 ★★: Critical Characteristics, indicates product characteristics, functionalities, and manufacturing processes regarding to customer's specifications
 ★★: Safety Features indicates product characteristics, functionalities, and manufacturing processes complying to legal regulations stated by local government



INKJET CODE



Website:www.greenconn.com
 E-mail:sales@greenconn.com

REV. A UNIT. mm SCALE. 3:2

3RD.ANG PROJ.
 PAGE. 1/1

GENERAL TOLERANCE	
X.±3.0'	X.±0.30
.X'±2.0'	.X±0.25
.XX'±1.0'	.XX±0.20
.XXX'±0.5'	.XXX±0.15

DESIGNED:
 CHECKED:
 APPROVED:

DATE:
 DATE:
 DATE:

DWG. NO. AGZ081-HA
 PART NO. AGZ081-02APA

TITLE. 2 WAY PLUG STANDARD SEAL GT SERIES