

LASER CARVING DESCRIPTION: XX X XX XX

XX-YEAR: 20 = 2020  
X-MONTH: A = JAN, B = FEB,.....  
XX-DAY: 14 = 14th DAY  
XX-HOUR: 14 = 14 PM

Specifications

Current Rating 14 AWG: 13.0Amp AC/DC  
16 AWG: 13.0Amp AC/DC  
18 AWG: 10.0Amp AC/DC  
20 AWG: 7.5Amp AC/DC

Voltage Rating: 250V AC/DC.  
Insulation Resistance:1000MΩMin.  
Dielectric Withstanding Voltage:1500VAC  
Contact Resistance:20mΩMax.  
Operating Temperature:-55°C to +125°C

Materials

Insulator Material:High Temperature Thermoplastic, UL 94V-0 PA66 or the equivalent material

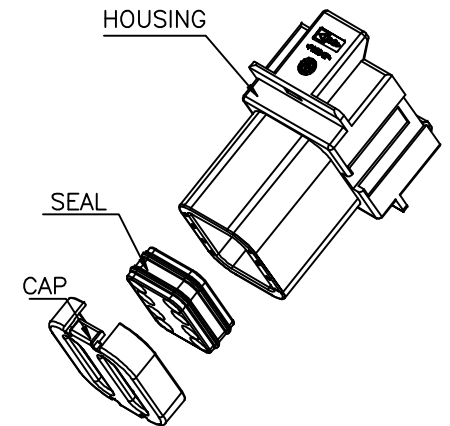
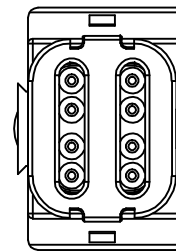
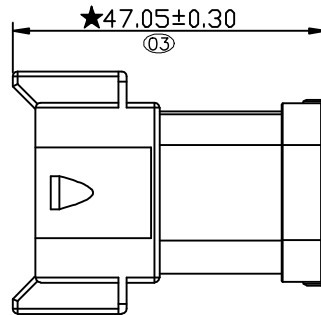
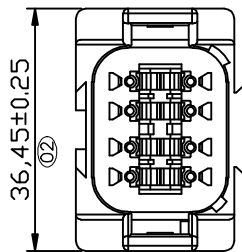
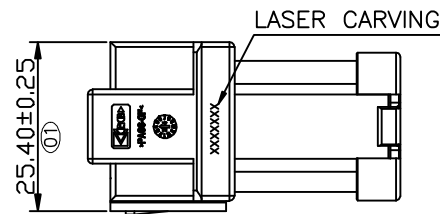
★All materials must meet Greenconn hazardous substances control standards.

★★: Significant Characteristics.

indicates product characteristics, functionalities, and manufacturing processes regarding to customer's specifications

★☆: Safety Features

indicates product characteristics, functionalities, and manufacturing processes complying to legal regulations stated by local government



**Greenconn**  
Website:www.greenconn.com  
E-mail:sales@greenconn.com

REV.	UNIT.	SCALE.
A	mm	1:1

3RD.ANG  
PROJ.  
  
PAGE. 1/1

GENERAL TOLERANCE	
X.'±3.0'	X.±0.30
.X'±2.0'	.X±0.25
.XX'±1.0'	.XX±0.20
.XXX'±0.5'	.XXX±0.15

DESIGNED:  
CHECKED:  
APPROVED:

DATE:  
DATE:  
DATE:

DWG. NO.  
AGZ021-HA-N  
PART NO.  
AGZ021-08APA-N

TITLE.  
8 WAYRECEPTACLE,  
STANDARD SEAL EXTRA  
THIN SEAL,SHORT CAP  
GT SERIES