

LASER CARVING DESCRIPTION: XX X XX XX

XX-YEAR: 20 = 2020  
 X-MONTH: A = JAN, B = FEB,.....  
 XX-DAY: 14 = 14th DAY  
 XX-HOUR: 14 = 14 PM

Specifications

Current Rating 14 AWG: 13.0Amp AC/DC  
 16 AWG: 13.0Amp AC/DC  
 18 AWG: 10.0Amp AC/DC  
 20 AWG: 7.5Amp AC/DC

Voltage Rating: 250V AC/DC.  
 Insulation Resistance:1000MΩMin.  
 Dielectric Withstanding Voltage:1500VAC  
 Contact Resistance:20mΩMax.  
 Operating Temperature:-55°C to +125°C

Materials

Insulator Material:High Temperature Thermoplastic, UL 94V-0 PA66 or the equivalent material

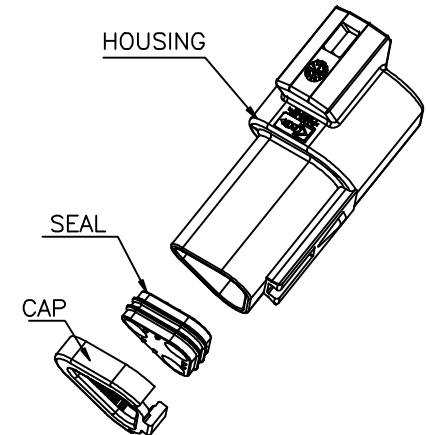
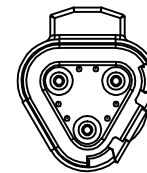
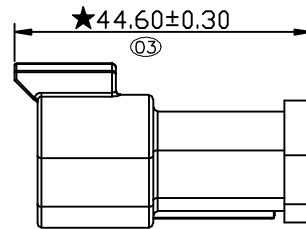
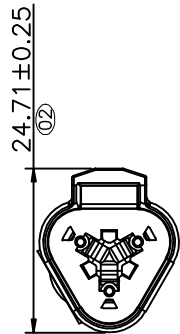
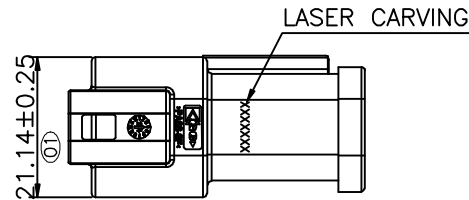
★All materials must meet Greenconn hazardous substances control standards.

★★: Significant Characteristics.

indicates product characteristics, functionalities, and manufacturing processes regarding to customer's specifications

★☆: Safety Features

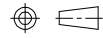
indicates product characteristics, functionalities, and manufacturing processes complying to legal regulations stated by local government



Website:www.greenconn.com  
 E-mail:sales@greenconn.com

REV. A UNIT. mm SCALE. 1:1

3RD.ANG  
 PROJ.



PAGE. 1/1

GENERAL TOLERANCE

|            |           |
|------------|-----------|
| X.'±3.0'   | X.±0.30   |
| .X'±2.0'   | .X±0.25   |
| .XX'±1.0'  | .XX±0.20  |
| .XXX'±0.5' | .XXX±0.15 |

DESIGNED:

DATE:

CHECKED:

DATE:

APPROVED:

DATE:

DWG. NO.

AGZ021-HA-N

PART NO.

AGZ021-03APA-N

TITLE.

3 WAYRECEPTACLE,  
 STANDARD SEAL EXTRA  
 THIN SEAL,SHORT CAP  
 GT SERIES