

LASER CARVING DESCRIPTION : XX X XX XX

XX-YEAR: 20 = 2020
X-MONTH: A = JAN, B = FEB,.....
XX-DAY: 14 = 14th DAY
XX-HOUR: 14 = 14 PM

Specifications

Current Rating 14 AWG: 13.0Amp AC/DC
16 AWG: 13.0Amp AC/DC
18 AWG: 10.0Amp AC/DC
20 AWG: 7.5Amp AC/DC

Voltage Rating: 250V AC/DC.

Insulation Resistance:1000MΩ Min.

Dielectric Withstanding Voltage:1500VAC

Contact Resistance:20mΩMax.

Operating Temperature:-55°C to +125°C

Materials

Insulator Material:High Temperature Thermoplastic,
UL 94V-0 PA66 or the equivalent material

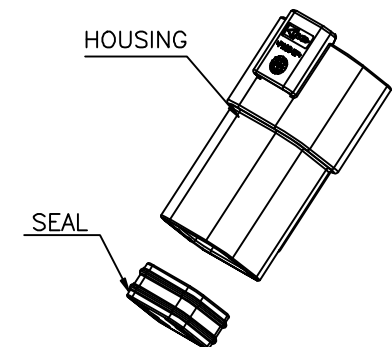
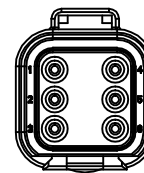
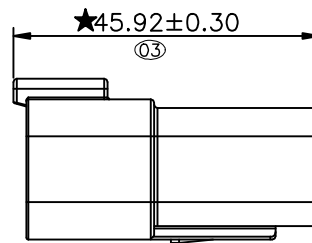
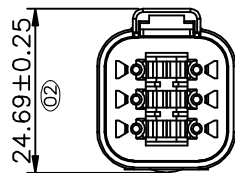
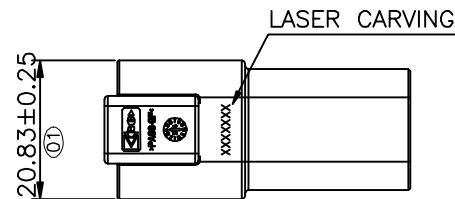
★All materials must meet Greenconn hazardous
substances control standards.

★: Significant Characteristics.

indicates product characteristics, functionalities, and
manufacturing processes regarding to customer's
specifications

★: Safety Features

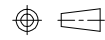
indicates product characteristics, functionalities, and
manufacturing processes complying to legal
regulations stated by local government



Website:www.greenconn.com
E-mail:sales@greenconn.com

REV. A UNIT. mm SCALE. 1:1

3RD.ANG
PROJ.



PAGE. 1/1

GENERAL TOLERANCE

X.'±3.0'	X.±0.30
.X'±2.0'	.X±0.25
.XX'±1.0'	.XX±0.20
.XXX'±0.5'	.XXX±0.15

DESIGNED:

DATE:

CHECKED:

DATE:

APPROVED:

DATE:

DWG. NO.

AGZ011-HA-N

PART NO.

AGZ011-06APA-N

TITLE.

6 WAY
RECEPTACLE,STANDARD
SEAL EXTRA THIN
SEAL GT SERIES