

LASER CARVING DESCRIPTION : XX X XX XX

XX-YEAR: 20 = 2020  
 X-MONTH: A = JAN, B = FEB,.....  
 XX-DAY: 14 = 14th DAY  
 XX-HOUR: 14 = 14 PM

Specifications

Current Rating 14 AWG: 13.0Amp AC/DC  
 16 AWG: 13.0Amp AC/DC  
 18 AWG: 10.0Amp AC/DC  
 20 AWG: 7.5Amp AC/DC

Voltage Rating: 250V AC/DC.  
 Insulation Resistance:1000MΩMin.  
 Dielectric Withstanding Voltage:1500VAC  
 Contact Resistance:20mΩMax.  
 Operating Temperature:-55°C to +125°C

Materials

Insulator Material:High Temperature Thermoplastic,  
 UL 94V-0 PA66 or the equivalent material

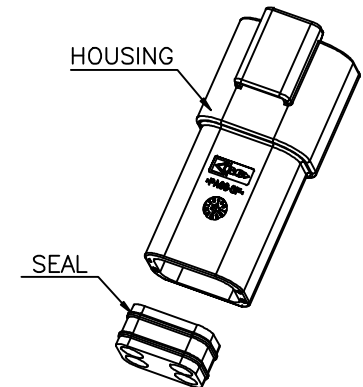
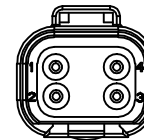
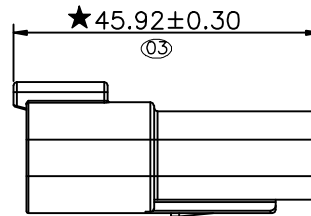
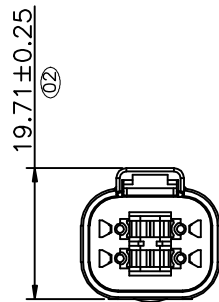
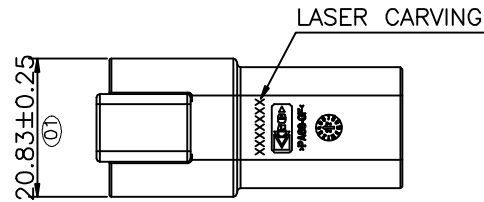
★All materials must meet Greenconn hazardous substances control standards.

★★: Significant Characteristics.

indicates product characteristics, functionalities, and manufacturing processes regarding to customer's specifications

★★: Safety Features

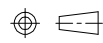
indicates product characteristics, functionalities, and manufacturing processes complying to legal regulations stated by local government



Website:www.greenconn.com  
 E-mail:sales@greenconn.com

REV. A UNIT. mm SCALE. 1:1

3RD.ANG  
 PROJ.



PAGE. 1/1

GENERAL TOLERANCE

X.'±3.0'	X.±0.30
.X'±2.0'	.X±0.25
.XX'±1.0'	.XX±0.20
.XXX'±0.5'	.XXX±0.15

DESIGNED:

DATE:

CHECKED:

DATE:

APPROVED:

DATE:

DWG. NO.

AGZ011-HA

PART NO.

AGZ011-04APA

TITLE.

4 WAY  
 RECEPTACLE,STANDARD  
 SEAL EXTRA THIN  
 SEAL SERIES