

# Box header

pitch 2.00mm (0.079") | S.M.T. | Board spacer | Locating peg | Polarization

GPFC221 Series

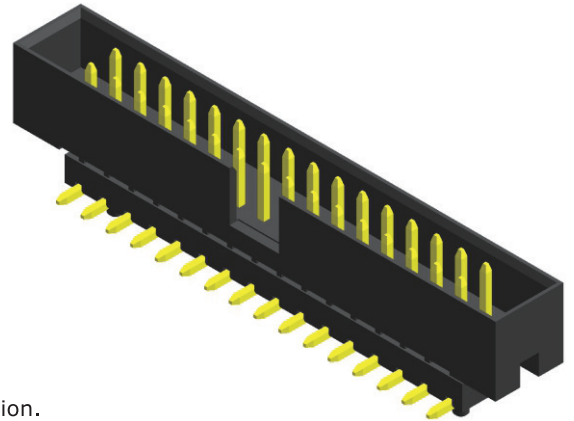
## Specifications

Current Rating : 2.0 Ampere  
 Insulation Resistance : 1000 MΩ Min  
 Dielectric Withstanding : 500V AC  
 Contact Resistance : 20 mΩ Max  
 Operating Temperature : -40°C to +105°C

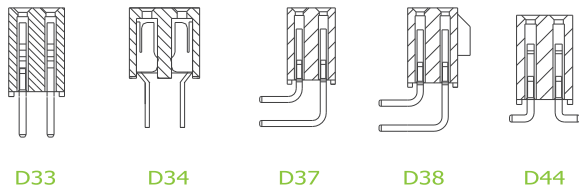
## Materials

Contact Material : Brass  
 Insulation Material : High Temperature Thermoplastic, 94V-0 Nylon

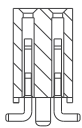
All materials must meet Greenconn's requirements for environmental protection.



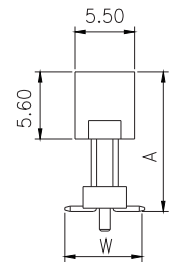
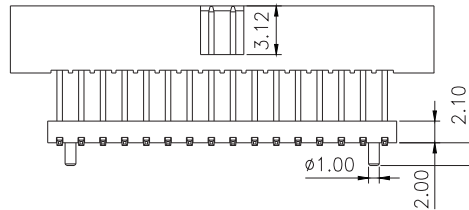
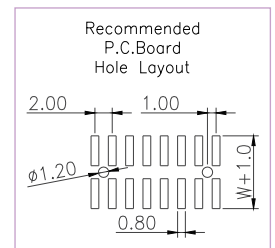
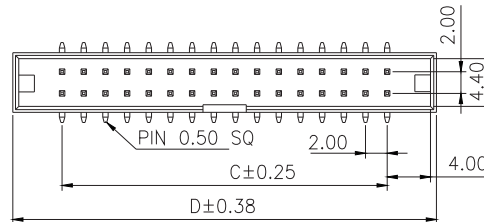
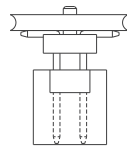
## Mating with



D33    D34    D37    D38    D44



D45



\* For Coded Dimension Not Inside The Table, Please Refer To "Ordering Information"

No. of Pins/Row	Dimension Information		No. of Pins/Row	Dimension Information		No. of Pins/Row	Dimension Information	
	C	D		C	D		C	D
05	8.00	17.10	11	20.00	29.10	21	40.00	49.10
06	10.00	19.10	12	22.00	31.10	22	42.00	51.10
07	12.00	21.10	13	24.00	33.10	23	44.00	53.10
08	14.00	23.10	14	26.00	35.10	24	46.00	55.10
09	16.00	25.10	15	28.00	37.10	25	48.00	57.10
10	18.00	27.10	16	30.00	39.10			
			17	32.00	41.10			
			18	34.00	43.10			
			19	36.00	45.10			
			20	38.00	47.10			

## Ordering Information

GPFC2 **XX** - **XX** **XX** **XXX** R1BC  
 Height Option (H) No. of Pins per Row Standard Plating Pin Length (A/W)  
**21** **05** **02** : Gold Flash **006** : A=13.7 / W=7.80  
 Selective Plating  
**01** : Tin  
**05** : Gold Flash / Tin  
 For special length requirement  
 Please contact our sales personnel