

Pin Header

pitch 1.27mm (0.05") | Dual row | Dip | Board spacer

GPEA230
GPEA231
GPEA232
GPEA233
GPEA235 Series

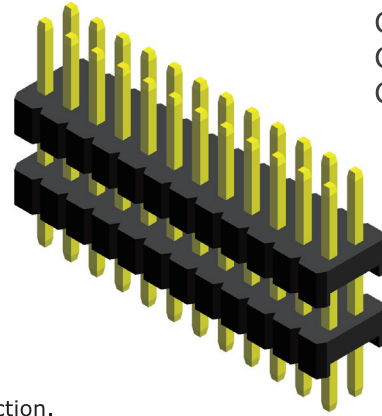
Specifications

Current Rating : 1.0 Ampere
Insulation Resistance : 1000 MΩ Min
Dielectric Withstanding : 300V AC
Contact Resistance : 20 mΩ Max
Operating Temperature : -40°C to +105°C

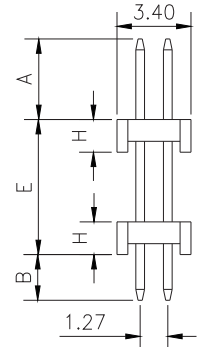
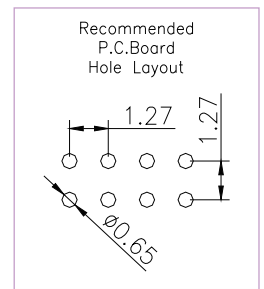
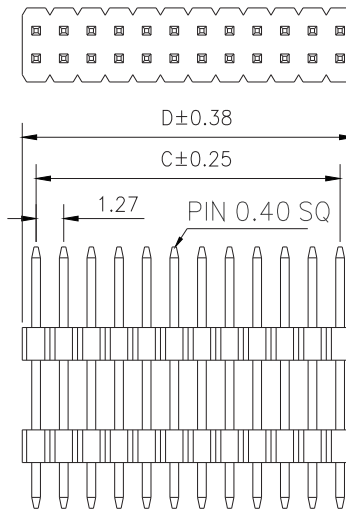
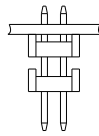
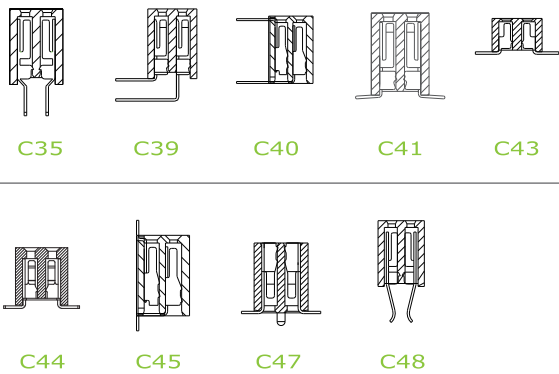
Materials

Contact Material : Brass
Insulation Material : High Temperature Thermoplastic, 94V-0 LCP

All materials must meet Greenconn's requirements for environmental protection.



Mating with



* For Coded Dimension Not Inside The Table, Please Refer To "Ordering Information"

No. of Pins/Row	Dimension Information			No. of Pins/Row	Dimension Information			No. of Pins/Row	Dimension Information			No. of Pins/Row	Dimension Information		
	C	D			C	D			C	D			C	D	
02	1.27	2.54		11	12.70	13.97		21	25.40	26.67		31	38.10	39.37	
03	2.54	3.81		12	13.97	15.24		22	26.67	27.94		32	39.37	40.64	
04	3.81	5.08		13	15.24	16.51		23	27.94	29.21		33	40.64	41.91	
05	5.08	6.35		14	16.51	17.78		24	29.21	30.48					
06	6.35	7.62		15	17.78	19.05		25	30.48	31.75					
07	7.62	8.89		16	19.05	20.32		26	31.75	33.02					
08	8.89	10.16		17	20.32	21.59		27	33.02	34.29					
09	10.16	11.43		18	21.59	22.86		28	34.29	35.56					
10	11.43	12.70		19	22.86	24.13		29	35.56	36.83					
				20	24.13	25.40		30	36.83	38.10					

Ordering Information

Standard Packaging : Box

GPEA2	[XX]	-	[XX]	[XX]	[X]	[XXX]	C1BA
	Height Option (H) Standard		No. of Pins per Row	Standard Plating	[A]	Pin Length (A / B / E)	
	[30] : H= 3.00 [31] : H= 2.50		[02]	[02] : Gold Flash	GPEA230...A	[002] : A=1.90 / B=2.60 / E=9.90	
	Height Option (H) Selective		[33]	Selective Plating	GPEA231...A	[020] : A=2.80 / B=3.00 / E=6.20	
	[32] : H= 1.00			[01] : Tin			
	[33] : H= 1.50			[05] : Gold Flash / Tin			
	[35] : H= 2.00						For special length requirement Please contact our sales personnel