

Female Header

pitch 3.96mm (0.156") | Single row | S.M.T.

CSJC101 Series

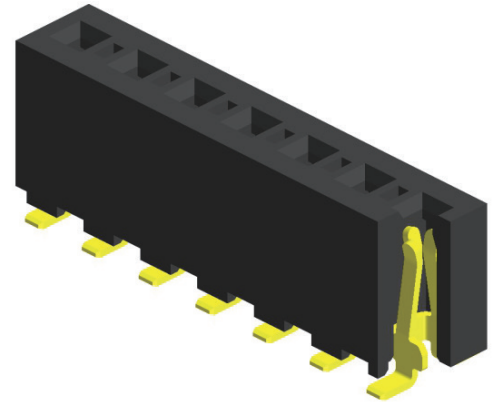
Specifications

Current Rating : 7.9 Ampere
 Insulation Resistance : 1000 MΩ Min
 Dielectric Withstanding : 1500V AC
 Contact Resistance : 20 mΩ Max
 Operating Temperature : -40°C to +105°C

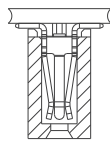
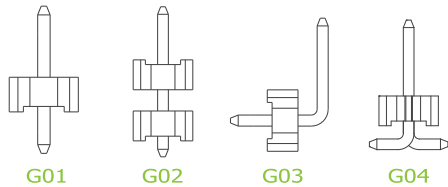
Materials

Contact Material : Phosphor Bronze
 Insulation Material : High Temperature Thermoplastic, 94V-0 LCP

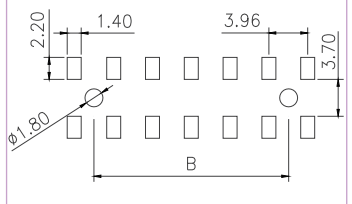
All materials must meet Greenconn's requirements for environmental protection.



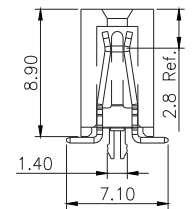
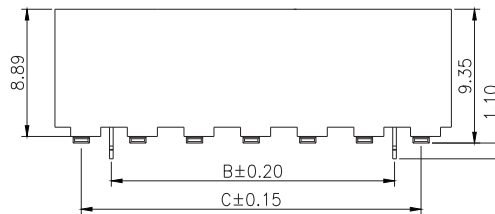
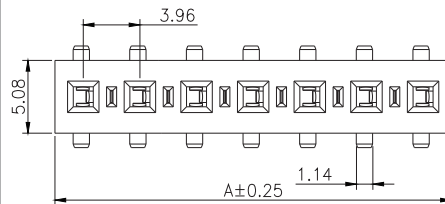
Mating with



Recommended P.C.Board Layout



P.S. : Suggested mating pin length : 3.8 ~8.5 mm



* For Coded Dimension Not Inside The Table, Please Refer To "Ordering Information"

No. of Pins/Row	Dimension Information			No. of Pins/Row	Dimension Information			No. of Pins/Row	Dimension Information		
	A	B	C		A	B	C		A	B	C
02	7.92		3.96	11	43.56	35.64	39.60	21	83.16	75.24	79.20
03	11.88	3.96	7.92	12	47.52	39.60	43.56	22	87.12	79.20	83.16
04	15.84	7.92	11.88	13	51.48	43.56	47.52	23	91.08	83.16	87.12
05	19.80	11.88	15.84	14	55.44	47.52	51.48	24	95.04	87.12	91.08
06	23.76	15.84	19.80	15	59.40	51.48	55.44				
07	27.72	19.80	23.76	16	63.36	55.44	59.40				
08	31.68	23.76	27.72	17	67.32	59.40	63.36				
09	35.64	27.72	31.68	18	71.28	63.36	67.32				
10	39.60	31.68	35.64	19	75.24	67.32	71.28				
				20	79.20	71.28	75.24				

Ordering Information

Standard Packaging : Tube

CSJC1 - F001C1AC
 Height Option (H) Standard No. of Pins per Row Standard Plating
 : Gold Flash
 }
 Selective Plating
 : Tin