

Female Header

pitch 2.54mm (0.1") | Dual row | Dip

CSHE206 Series

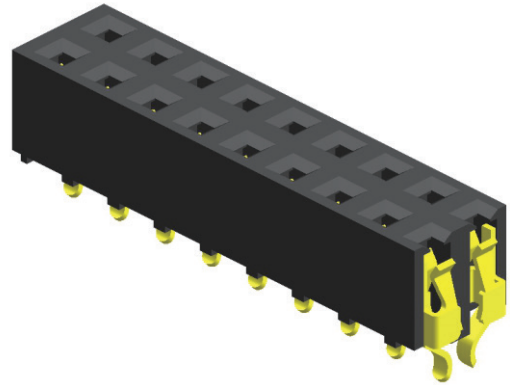
Specifications

Current Rating : 3.0 Ampere
 Insulation Resistance : 1000 MΩ Min
 Dielectric Withstanding : 600V AC
 Contact Resistance : 20 mΩ Max
 Operating Temperature : -40°C to +105°C

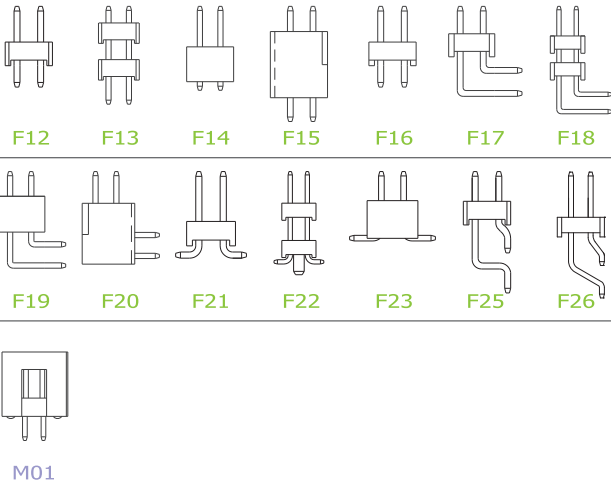
Materials

Contact Material : Phosphor Bronze
 Insulation Material : High Temperature Thermoplastic, 94V-0 Nylon

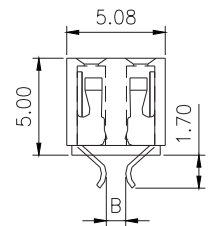
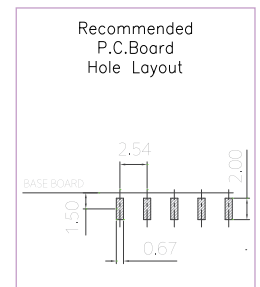
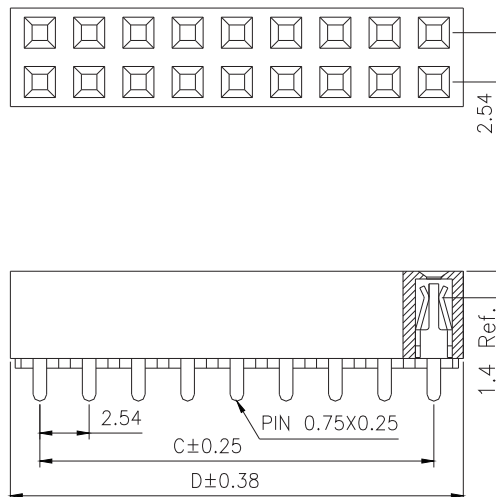
All materials must meet Greenconn's requirements for environmental protection.



Mating with



P.S. : Suggested mating pin length : 3.0 ~ 4.5 mm



* For Coded Dimension Not Inside The Table, Please Refer To "Ordering Information"

No. of Pins/Row	Dimension Information			No. of Pins/Row	Dimension Information			No. of Pins/Row	Dimension Information			No. of Pins/Row	Dimension Information		
	C	D			C	D			C	D			C	D	
02	2.54	5.58		11	25.40	28.44		21	50.80	53.84		31	76.20	79.24	
03	5.08	8.12		12	27.94	30.98		22	53.34	56.38		32	78.74	81.78	
04	7.62	10.66		13	30.48	33.52		23	55.88	58.92		33	81.28	84.32	
05	10.16	13.20		14	33.02	36.06		24	58.42	61.46		34	83.82	86.86	
06	12.70	15.74		15	35.56	38.60		25	60.96	64.00		35	86.36	89.40	
07	15.24	18.28		16	38.10	41.14		26	63.50	66.54		36	88.90	91.94	
08	17.78	20.82		17	40.64	43.68		27	66.04	69.08		37	91.44	94.48	
09	20.32	23.36		18	43.18	46.22		28	68.58	71.62		38	93.98	97.02	
10	22.86	25.90		19	45.72	48.76		29	71.12	74.16		39	96.52	99.56	
				20	48.26	51.30		30	73.66	76.70		40	99.06	102.10	

Ordering Information

Standard Packaging : Tube

CSHE2 - R1AC
 Height Option (H) No. of Pins per Row Standard Plating Pin Length (B)
 : Gold Flash : B=1.00
 Selective Plating For special length requirement
 : Tin Please contact our sales personnel
 : Gold Flash / Tin