

# Female Header

pitch 2.54mm (0.1") | Triple row | Dip

CSHA301 Series

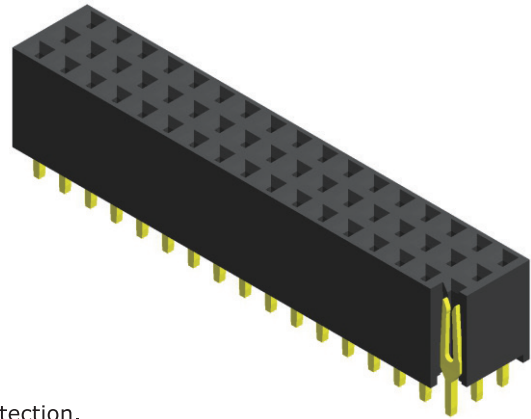
## Specifications

Current Rating : 3.0 Ampere  
 Insulation Resistance : 1000 MΩ Min  
 Dielectric Withstanding : 600V AC  
 Contact Resistance : 20 mΩ Max  
 Operating Temperature : -40°C to +105°C

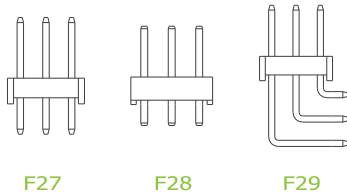
## Materials

Contact Material : Phosphor Bronze  
 Insulation Material : High Temperature Thermoplastic, 94V-0 PBT

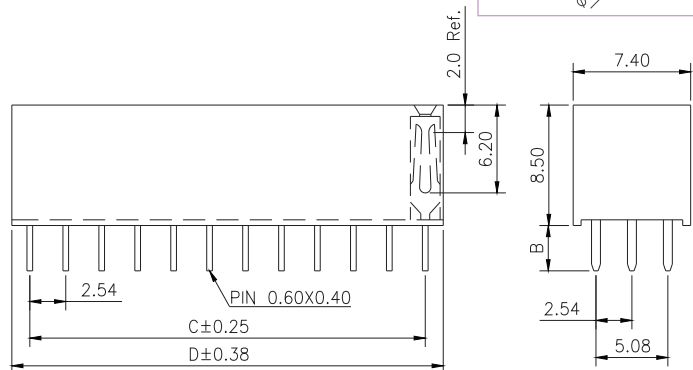
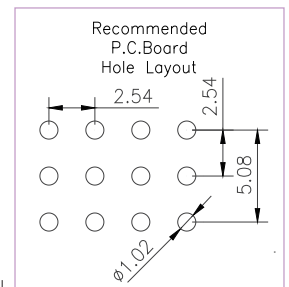
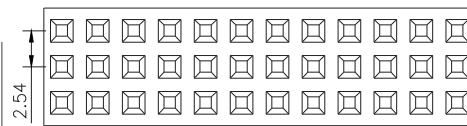
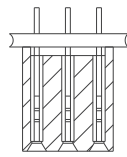
All materials must meet Greenconn's requirements for environmental protection.



## Mating with



P.S. : Suggested mating pin length : 4.0 ~ 6.0 mm



\* For Coded Dimension Not Inside The Table, Please Refer To "Ordering Information"

No. of Pins/Row	Dimension Information		No. of Pins/Row	Dimension Information		No. of Pins/Row	Dimension Information		No. of Pins/Row	Dimension Information	
	C	D		C	D		C	D		C	D
02	2.54	5.58	11	25.40	28.44	21	50.80	53.84	31	76.20	79.24
03	5.08	8.12	12	27.94	30.98	22	53.34	56.38	32	78.74	81.78
04	7.62	10.66	13	30.48	33.52	23	55.88	58.92	33	81.28	84.32
05	10.16	13.20	14	33.02	36.06	24	58.42	61.46	34	83.82	86.86
06	12.70	15.74	15	35.56	38.60	25	60.96	64.00	35	86.36	89.40
07	15.24	18.28	16	38.10	41.14	26	63.50	66.54	36	88.90	91.94
08	17.78	20.82	17	40.64	43.68	27	66.04	69.08	37	91.44	94.48
09	20.32	23.36	18	43.18	46.22	28	68.58	71.62	38	93.98	97.02
10	22.86	25.90	19	45.72	48.76	29	71.12	74.16	39	96.52	99.56
			20	48.26	51.30	30	73.66	76.70	40	99.06	102.10

## Ordering Information

Standard Packaging : Tube

CSHA3	<input type="text" value="XX"/>	-	<input type="text" value="XX"/>	<input type="text" value="XX"/>	<input type="text" value="X"/>	<input type="text" value="XXX"/>	A1AC
	Height Option (H)		No. of Pins per Row	Standard Plating	<input type="text" value="A"/>	Pin Length (B)	
	<input type="text" value="01"/>		<input type="text" value="02"/>	<input type="text" value="02"/> : Gold Flash		<input type="text" value="001"/> : B=3.20	
			<input type="text" value="40"/>	Selective Plating			For special length requirement Please contact our sales personnel
				<input type="text" value="01"/> : Tin			
				<input type="text" value="05"/> : Gold Flash / Tin			