

Female Header

pitch 2.00mm (0.079") | Single row | Dip

CSFA101 Series

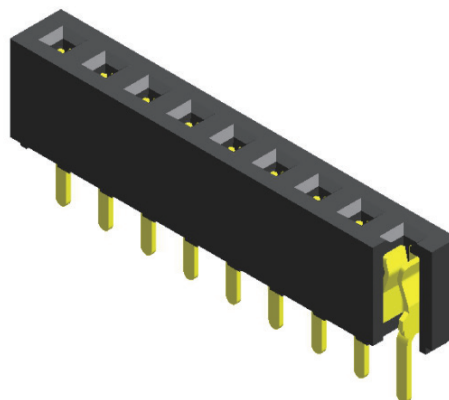
Specifications

Current Rating : 2.0 Ampere
 Insulation Resistance : 1000 MΩ Min
 Dielectric Withstanding : 500V AC
 Contact Resistance : 20 mΩ Max
 Operating Temperature : -40°C to +105°C

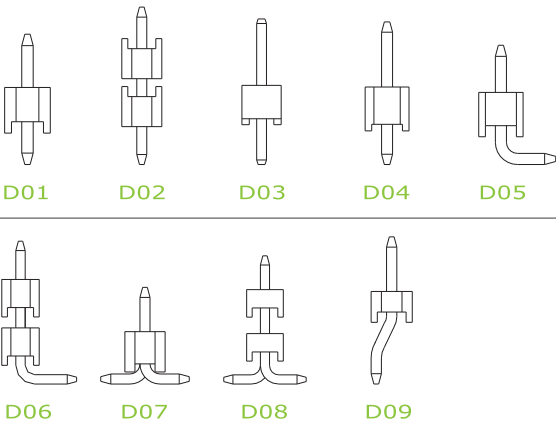
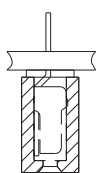
Materials

Contact Material : Brass
 Insulation Material : High Temperature Thermoplastic, 94V-0 Nylon

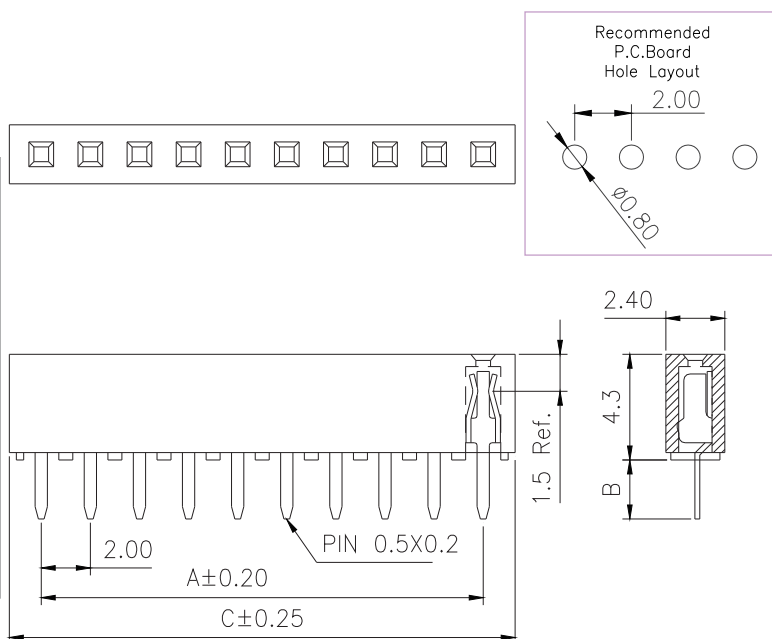
All materials must meet Greenconn's requirements for environmental protection.



Mating with



P.S. : Suggested mating pin length : 3.0 ~ 4.0 mm



* For Coded Dimension Not Inside The Table, Please Refer To "Ordering Information"

No. of Pins/Row	Dimension Information		No. of Pins/Row	Dimension Information		No. of Pins/Row	Dimension Information		No. of Pins/Row	Dimension Information	
	A	C		A	C		A	C		A	C
02	2.00	4.60	11	20.00	22.60	21	40.00	42.60	31	60.00	62.60
03	4.00	6.60	12	22.00	24.60	22	42.00	44.60	32	62.00	64.60
04	6.00	8.60	13	24.00	26.60	23	44.00	46.60	33	64.00	66.60
05	8.00	10.60	14	26.00	28.60	24	46.00	48.60	34	66.00	68.60
06	10.00	12.60	15	28.00	30.60	25	48.00	50.60	35	68.00	70.60
07	12.00	14.60	16	30.00	32.60	26	50.00	52.60	36	70.00	72.60
08	14.00	16.60	17	32.00	34.60	27	52.00	54.60	37	72.00	74.60
09	16.00	18.60	18	34.00	36.60	28	54.00	56.60	38	74.00	76.60
10	18.00	20.60	19	36.00	38.60	29	56.00	58.60	39	76.00	78.60
			20	38.00	40.60	30	58.00	60.60	40	78.00	80.60

Ordering Information

Standard Packaging : Box

CSFA1 - R1AA
 Height Option (H) No. of Pins per Row Standard Plating Pin Length (B) : B=2.40
 : Gold Flash : B=2.40
 Selective Plating : Tin For special length requirement
 : Gold Flash / Tin Please contact our sales personnel