

# Board to Board

pitch 1.00mm (0.039") | Female | S.M.T. | Locating peg

CBCC210 Series

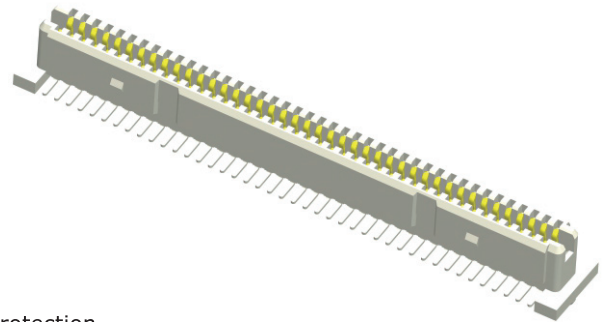
## Specifications

Current Rating : 0.5 Ampere  
 Insulation Resistance : 500 MΩ Min  
 Dielectric Withstanding : 200V AC  
 Contact Resistance : 30 mΩ Max  
 Operating Temperature : -40°C to +105°C

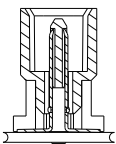
## Materials

Contact Material : Phosphor Bronze  
 Insulation Material : High Temperature Thermoplastic, 94V-0 LCP

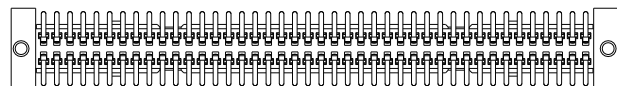
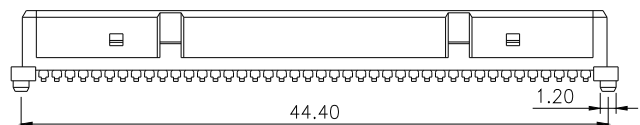
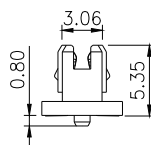
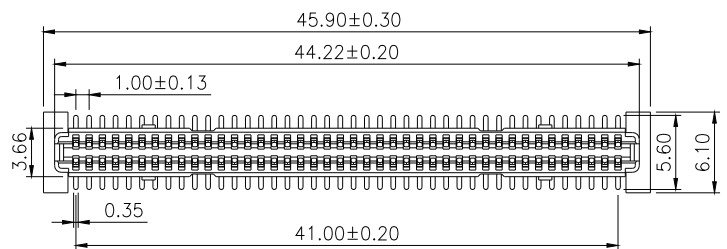
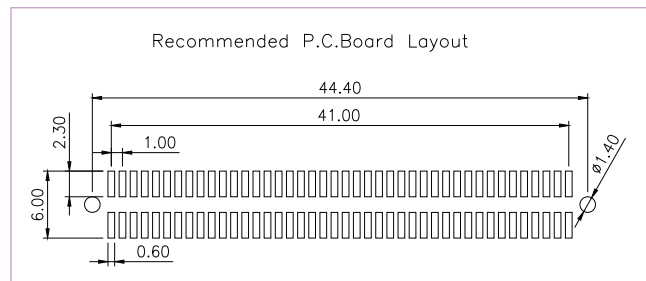
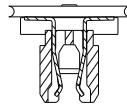
All materials must meet Greenconn's requirements for environmental protection.



## Mating with



B02



## Ordering Information

Standard Packaging : Cap+Tape Reel

CBCC2	<input type="checkbox"/> <input type="checkbox"/>	-	<input type="checkbox"/> <input type="checkbox"/>	<input type="checkbox"/> <input type="checkbox"/>	B001C2AF
	Height Option (H) Standard		No. of Pins per Row	Standard Plating	
	<input type="checkbox"/> 10		<input type="checkbox"/> 42	<input type="checkbox"/> 38 : Gold 10u" / Matte Tin 100u"	
				Selective Plating	
				<input type="checkbox"/> 01 : Tin	
				<input type="checkbox"/> 02 : Gold Flash	